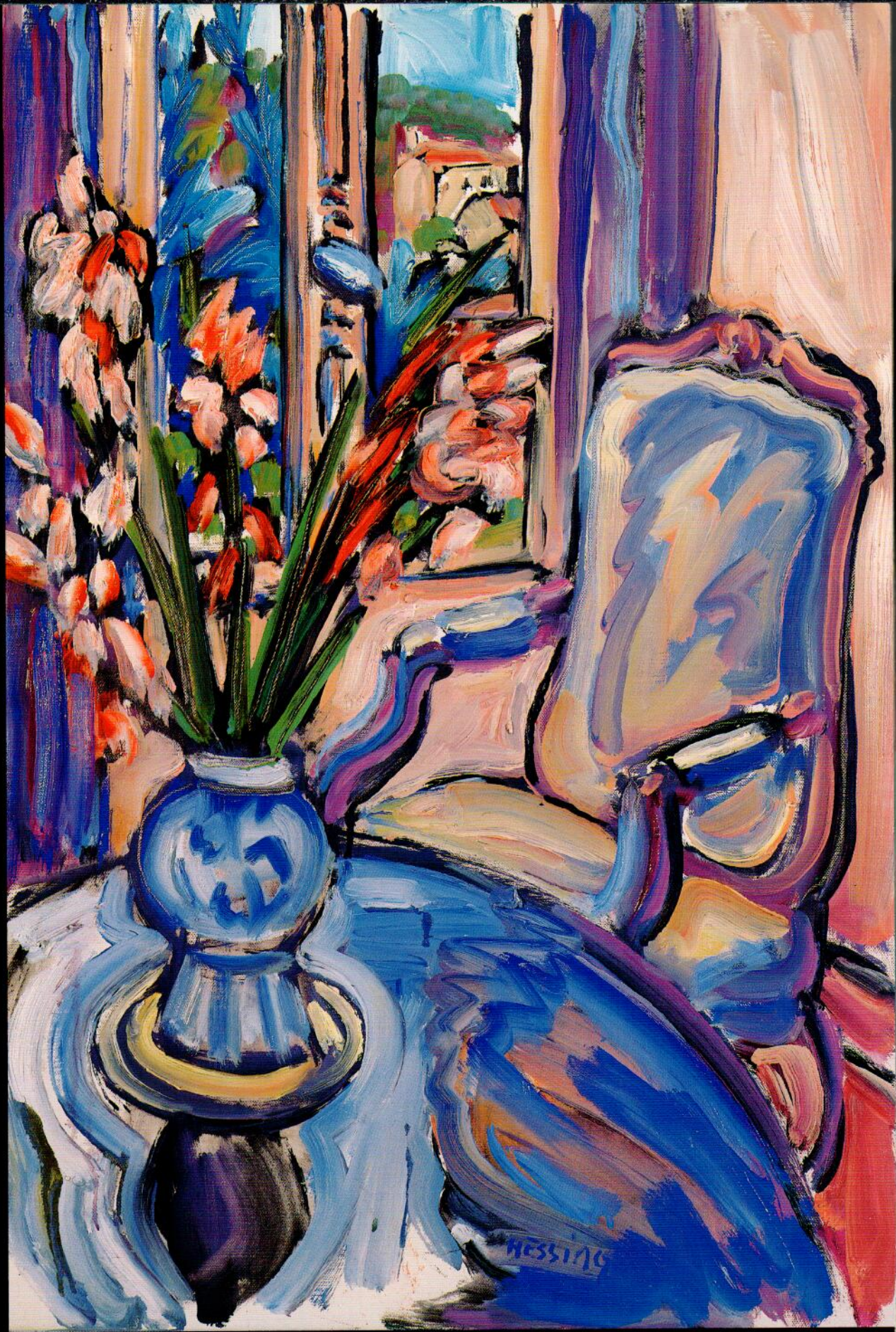


JEFFREY HESSING  
PAINTINGS OF SOUTHERN FRANCE



PUCKER GALLERY, Boston



Front cover:

1. *Gladiolas*, 1996

Oil on Canvas, 20 x 29", JH292

Opposite page:

2. *Carafe Blue*, 1996

Oil on Canvas, 26 x 32", JH276



JEFFREY HESSING

PAINTINGS OF SOUTHERN FRANCE





3. *Salon au Printemps*, 1995  
Oil on Canvas, 35 x 45½", JH247

Opposite page:  
4. *Reflets sur le Canope*, 1996  
Oil on Canvas, 21 x 26", JH291



# HESSING

Although American born and educated, Jeffrey Hessing has lived in the South of France for over fifteen years. He paints the landscapes and gardens of his adopted country with a passion and enthusiasm that expresses itself in brilliant color and expansive brushwork. Viewers who have followed his career will have come to recognize the landscape – both natural and domestic – that he inhabits, as he returns to vistas and views with an always curious eye. A closer examination of four of his recent canvases offers insight into the fascination this terrain holds for the artist.

The four works - *Garden* (JH256), *Cottonwood* (JH249), *Cottage in the Alps* (JH298), and *Two Cypresses under A Yellow Sky II* (JH286) – are all landscapes, but range within that category from the expansive vista to the intense close-up. They also share a boldness of color that is unusual even within

Hessing's own oeuvre. In *Two Cypresses*, the glow of the intense orange-red underground permeates the scene, asserting itself as outline around the equally saturated blues and greens of the trees and bushes. Similar color relationships are set up in *Garden*, particularly in the almost violent juxtapositions of tones that comprise the foreground. Indeed, color works in these canvases to signify something other than naturalism; the lapis blue of the *Cottonwood* tree or the bright yellow sky of *Two Cypresses* convey a state of mind or emotion rather than mimic the colors of the natural world.

This forceful color is accompanied by an increasing simplification of form; the bushes in the foreground of *Cottage* have become smooth ovals of color, while the cypress that stands behind them looks like a pillar of paint. The sharply pitched roof of the house in the center of the canvas echoes the clean triangles of the mountains behind it. Objects here have been reduced to their essential forms; the fundamental geometry of the cone, sphere, and rectangle revealed. In *Cottonwood* this simplification of shape seems to take on its own momentum, pushing the artist ever closer to abstraction.

Although not completely typical of Hessing's work, these four paintings reveal the foundation of the artist's project. His fascination with the landscape that inspired the Post-Impressionists and the Fauves is not accidental. Like them, he is interested in using vibrant color and simplified form to re-interpret the world around him, representing on canvas both its elemental energy and its underlying stability.



– PMF, 1997



Opposite page  
7. *Vue sur la Vielle Ville*, 1996  
Oil on Canvas, 32 x 39", JH278

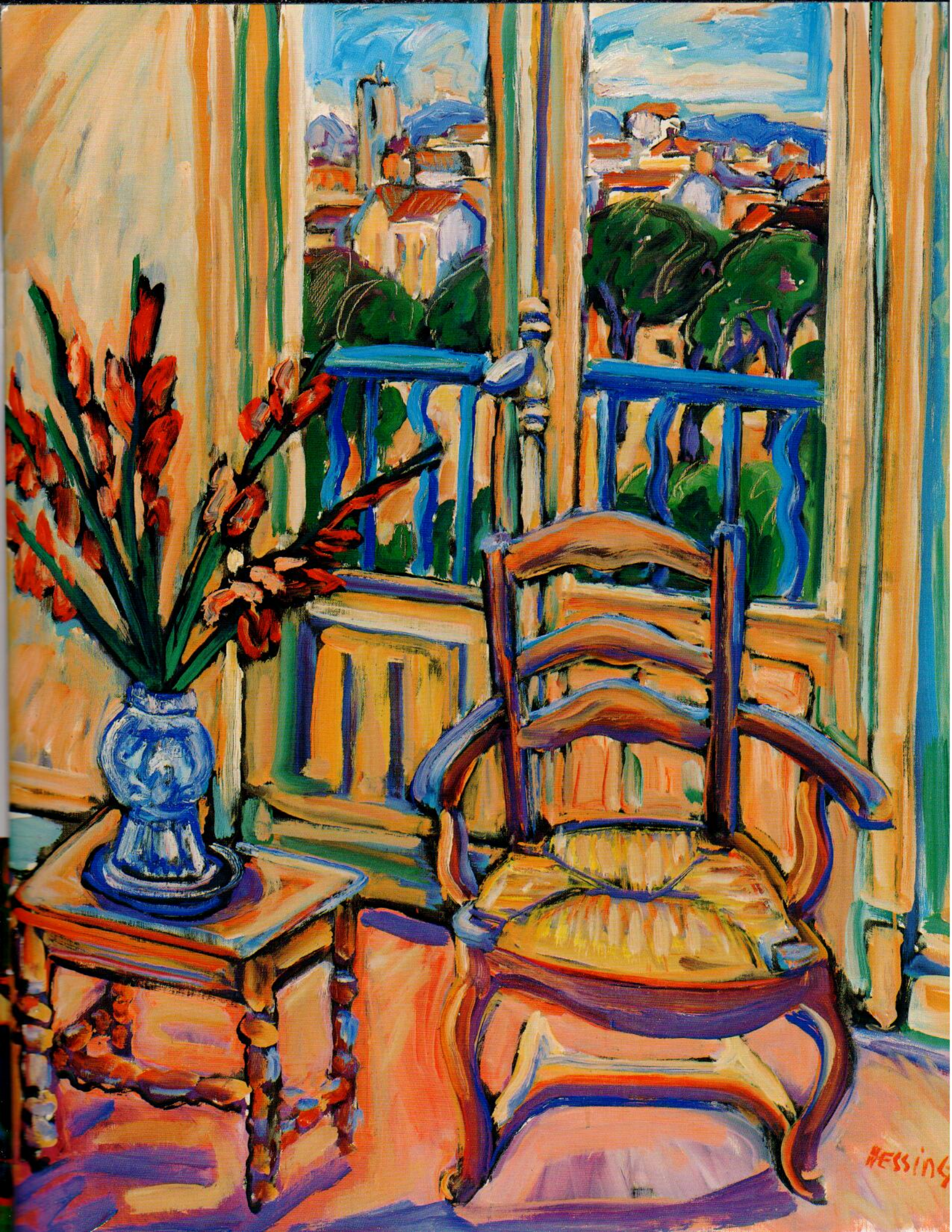


5. *Lily Pond*, 1995  
Oil on Canvas, 51 1/8 x 35", JH248



6. *Two Cypresses Under a Yellow Sky II*, 1996  
Oil on Canvas, 14 x 10", JH286

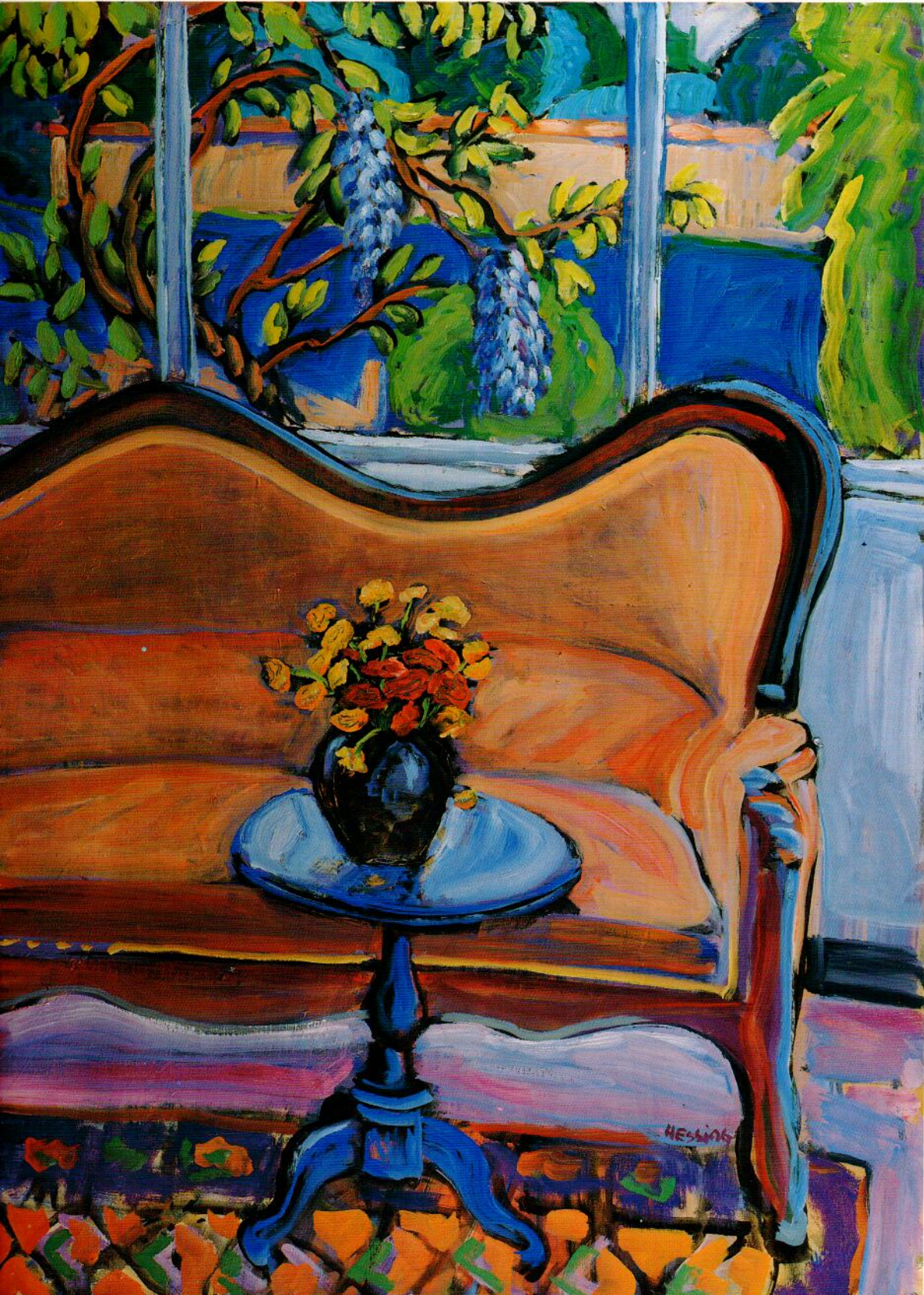




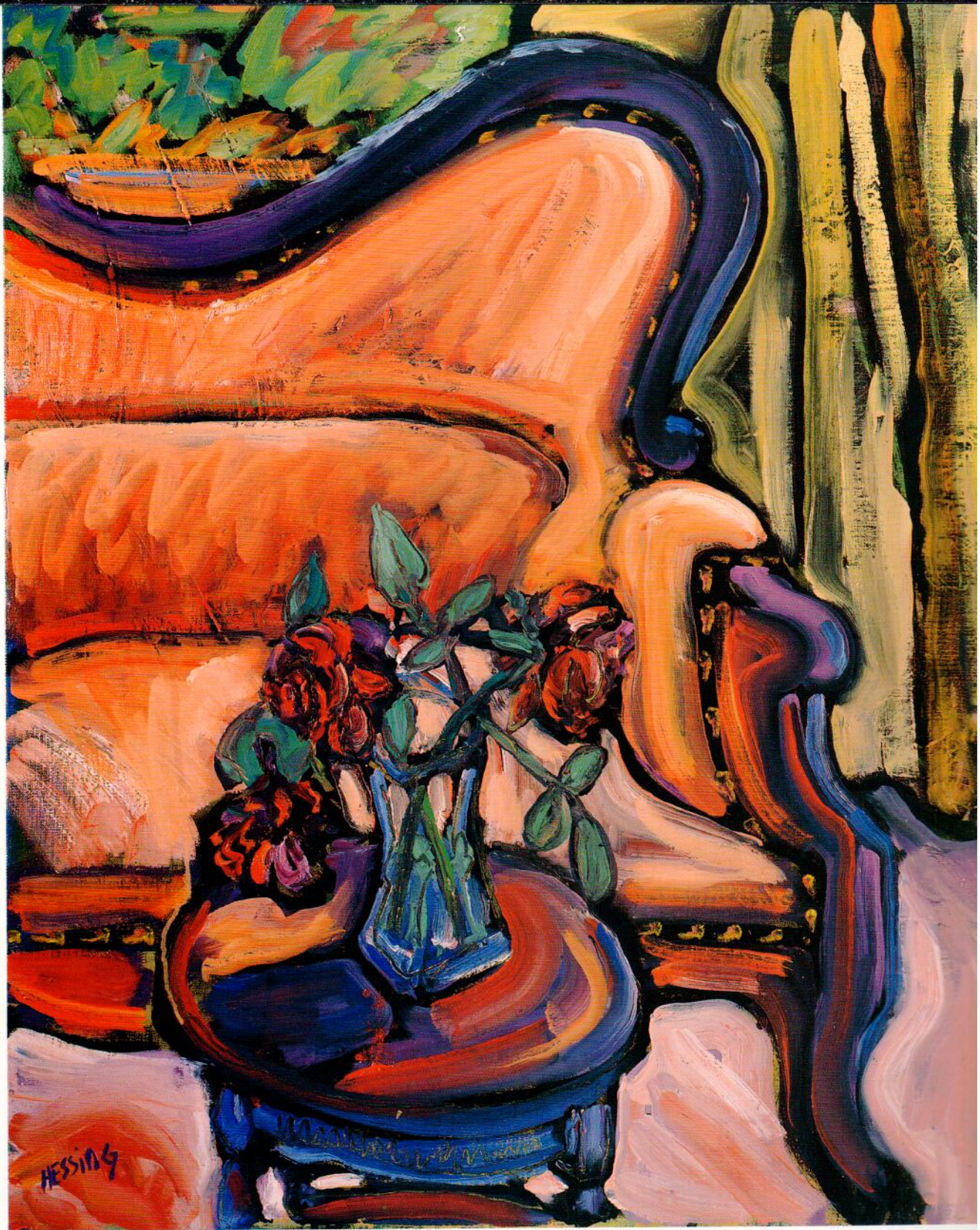
HESSING



8. Wisteria, 1995  
Oil on Canvas, 39 1/8 x 28 1/4", JH245







9. *Roses*, 1996  
Oil on Canvas, 29 x 24", JH283





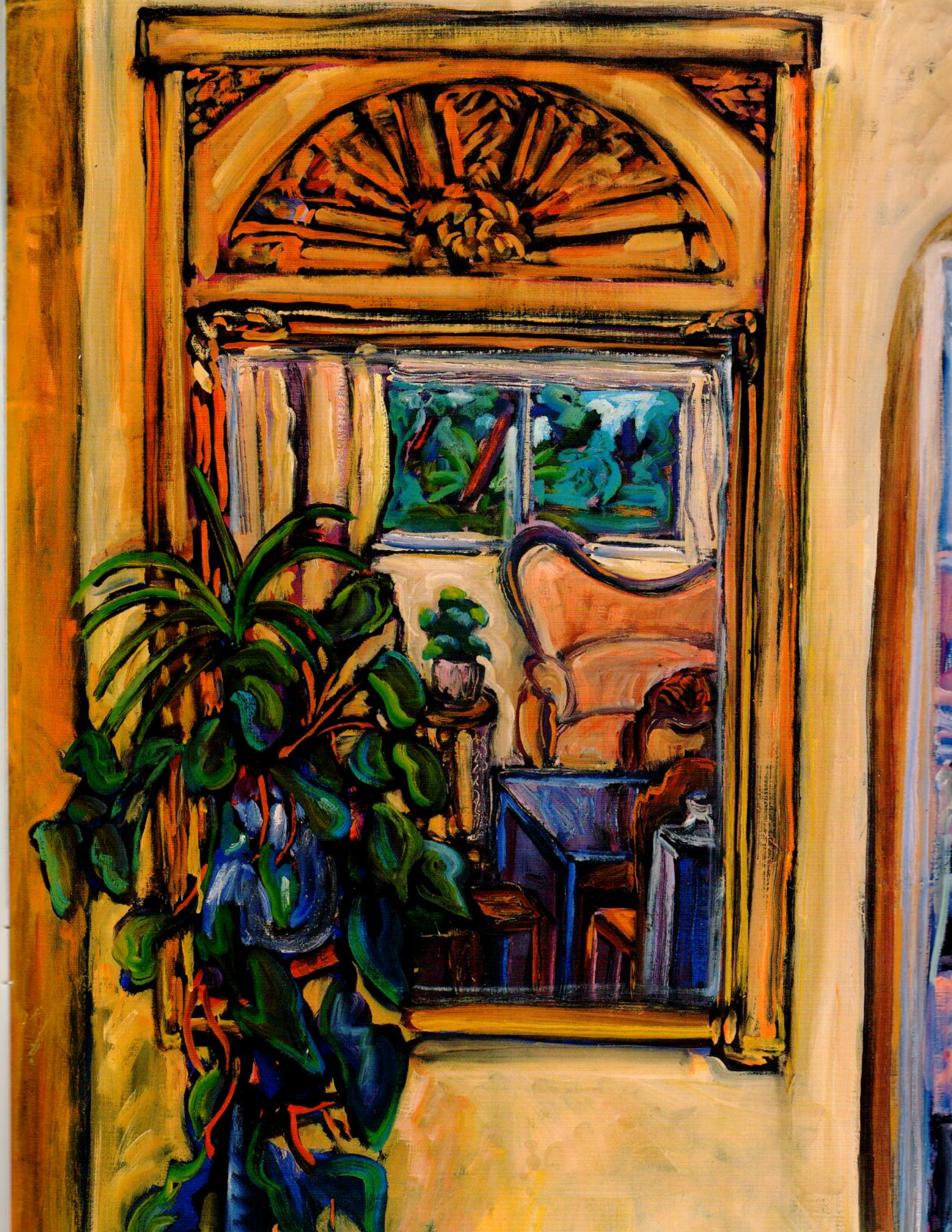
10. *My Chair*, 1996  
Oil on Canvas, 32 x 39", JH281



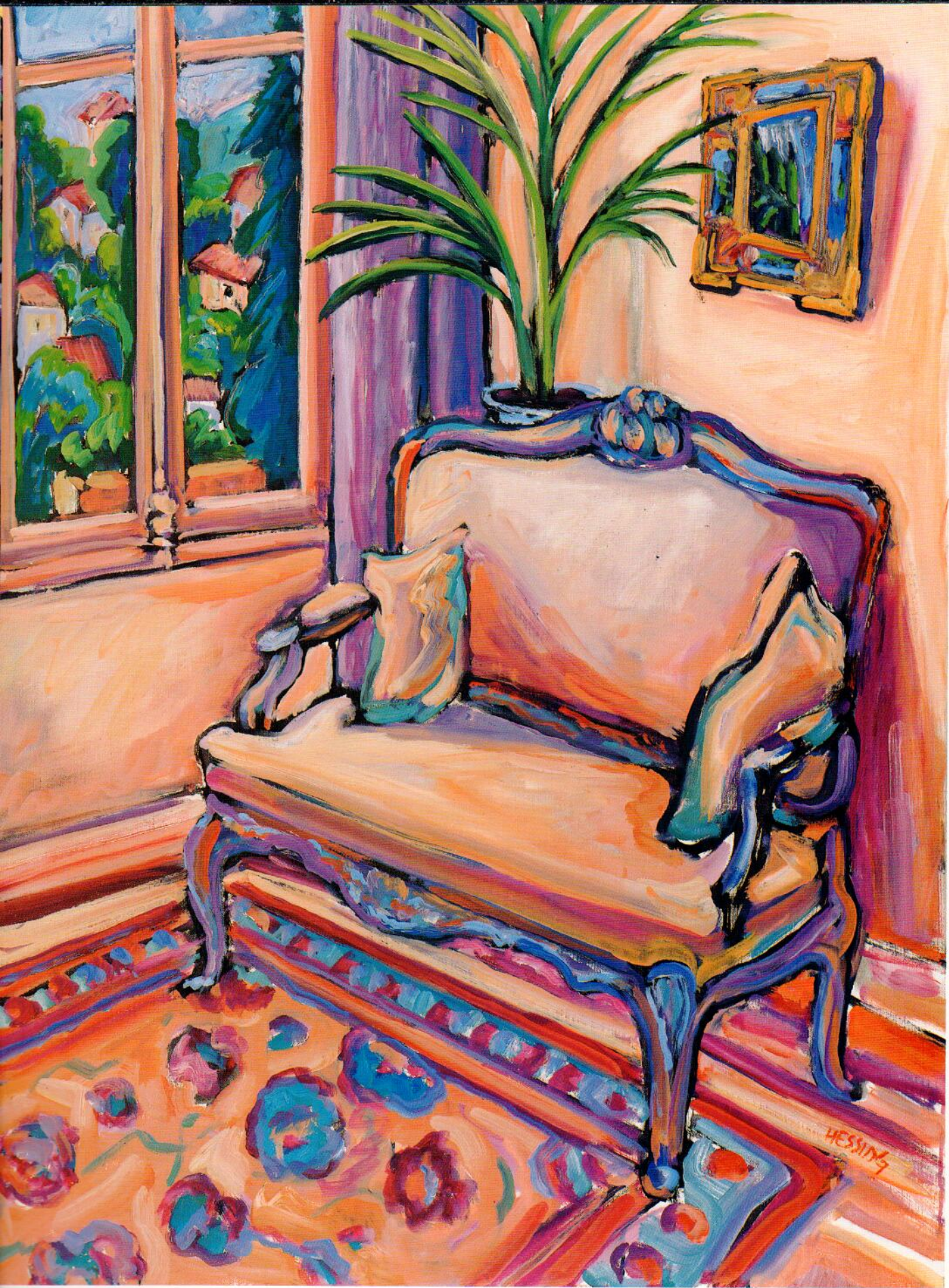
11. *Villa Romarine*, 1996  
Oil on Canvas, 39 x 32", JH282

Opposite page:  
12. *Interior Reflection*, 1996  
Oil on Canvas, 35 x 46", JH294





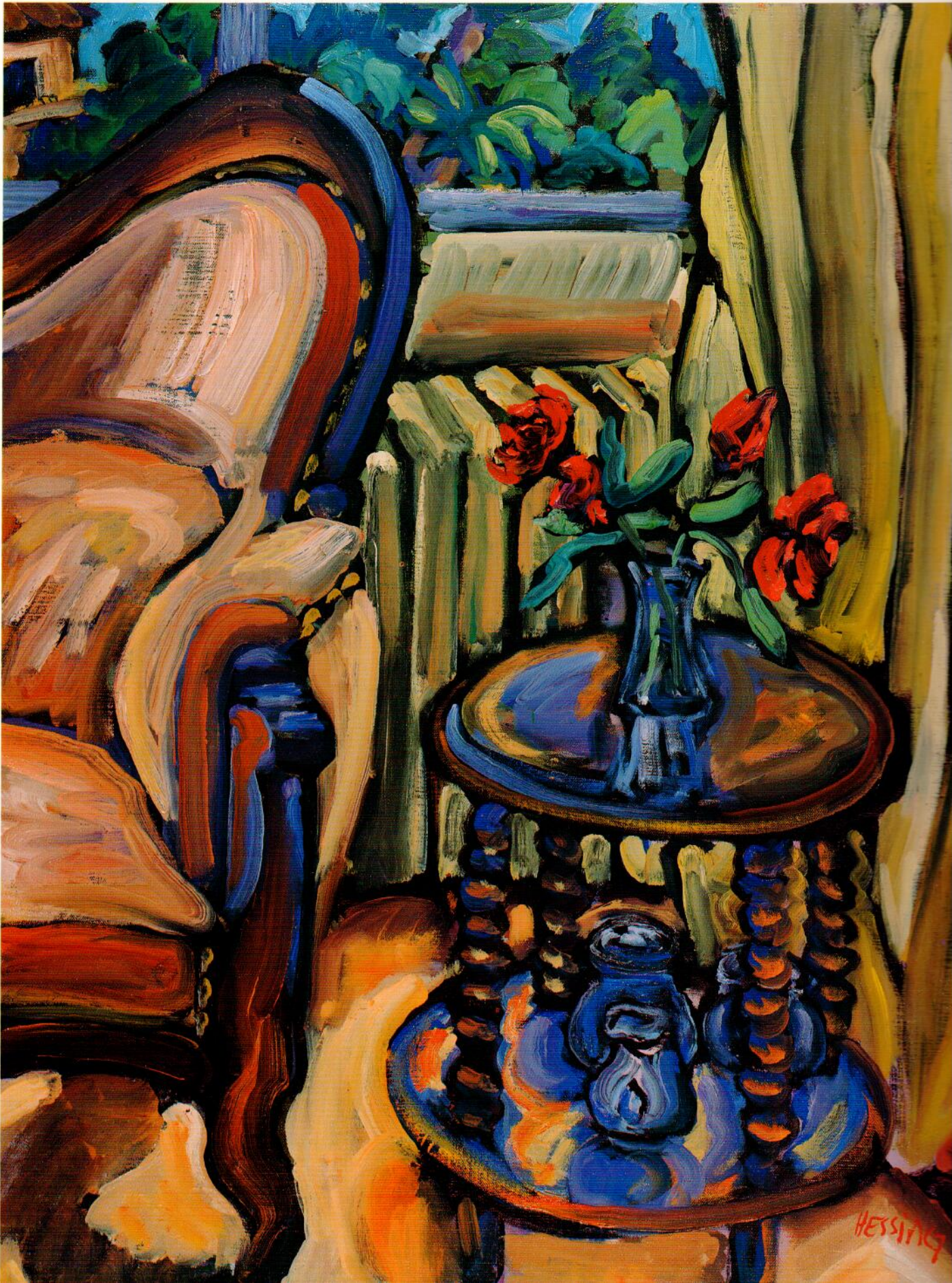




13. *Two Cushions*, 1996  
Oil on Canvas, 29 x 39", JH279



14. *Three Roses*, 1996  
Oil on Canvas, 24 x 32", JH275







15. *Storm Over the Village*, 1995  
Oil on Canvas, 32 x 39 $\frac{1}{4}$ " , JH244

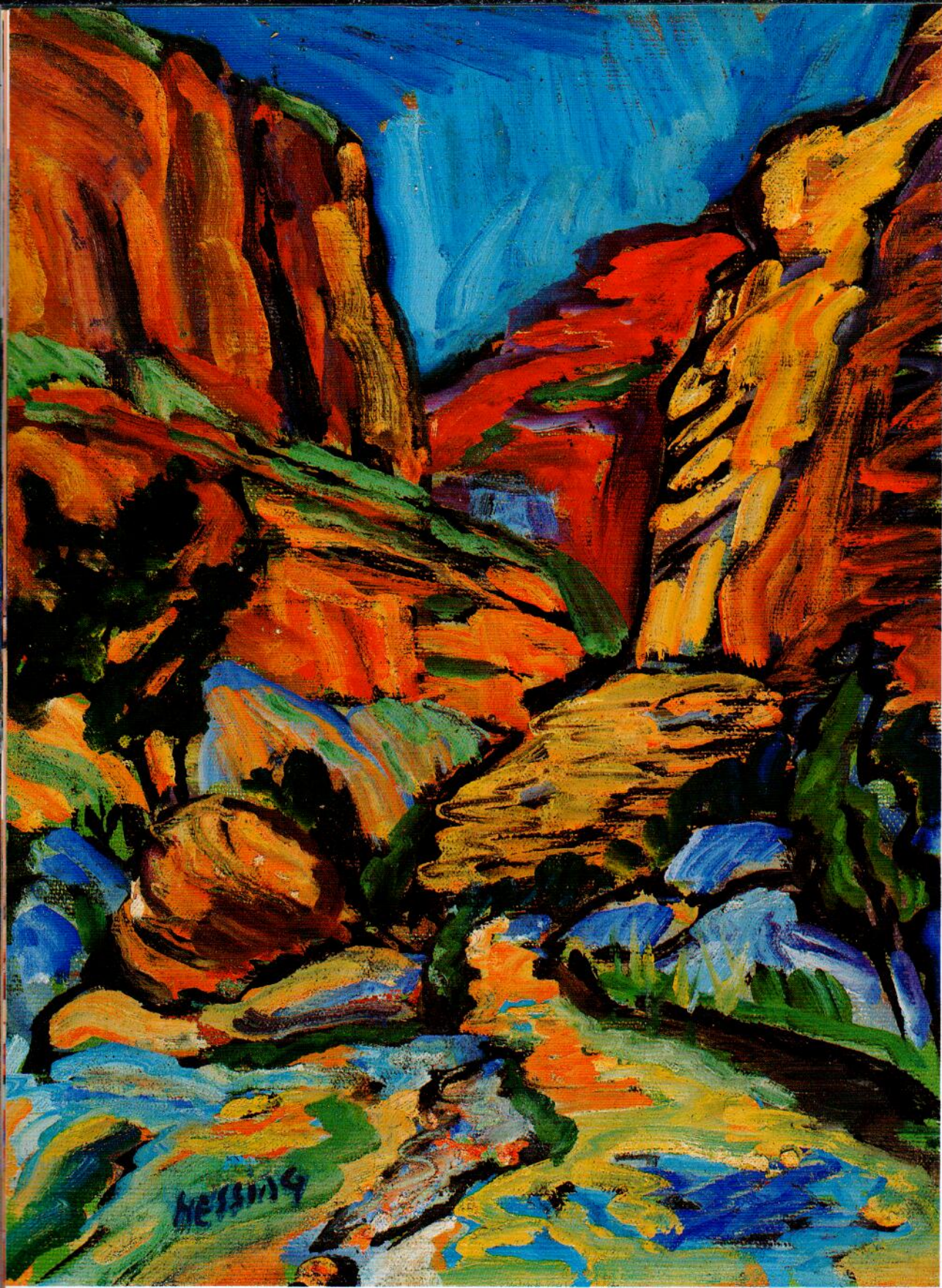
Opposite page:  
16. *Archway*, 1995  
Oil on Canvas, 39 $\frac{1}{8}$  x 28 $\frac{1}{4}$ " , JH246





HESSING





17. *Havasii*, 1995  
Oil on Canvas, 16 $\frac{1}{8}$  x 12", JH259





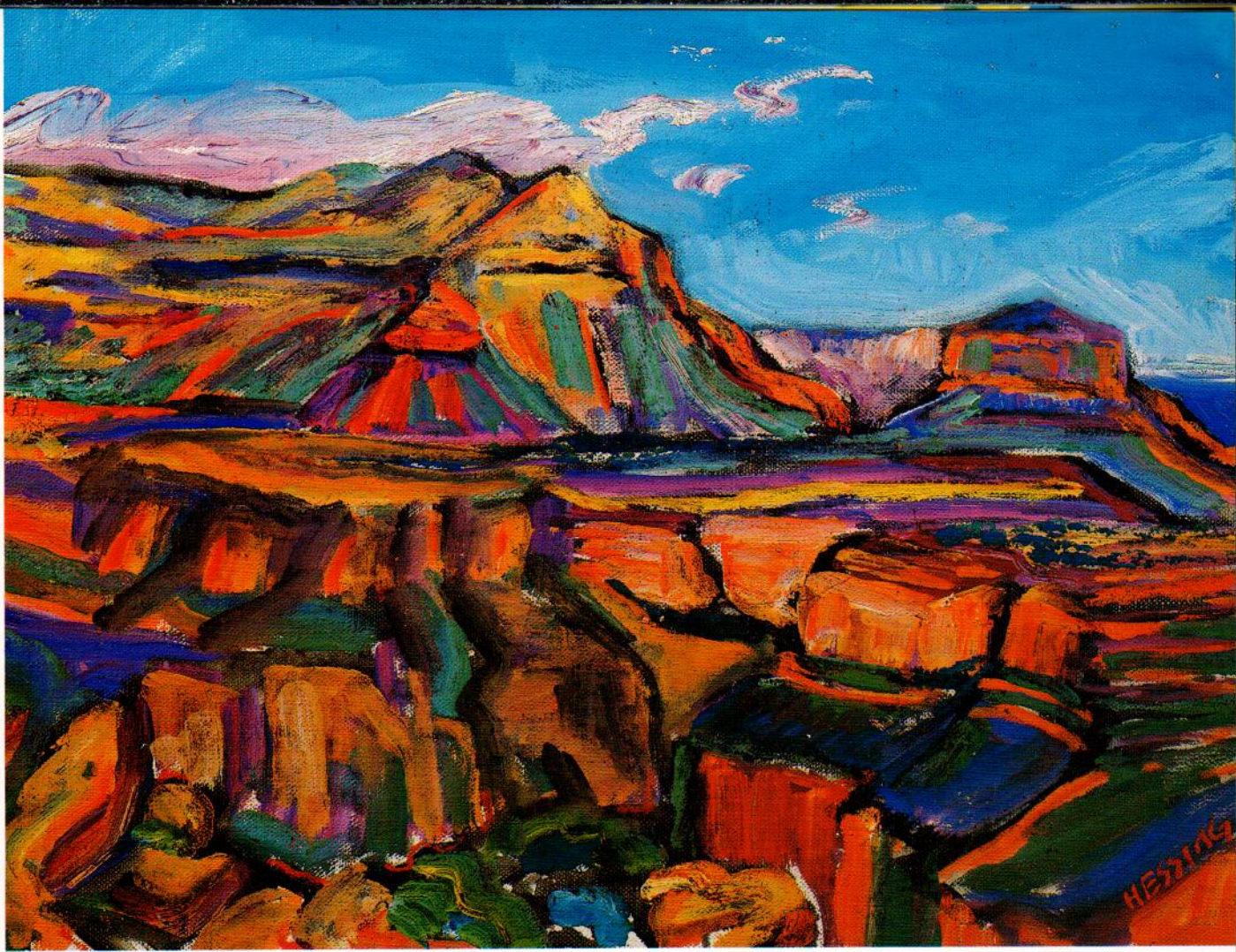
18. *Cottage in the Alps*, 1996  
Oil on Canvas, 74 x 51", JH298





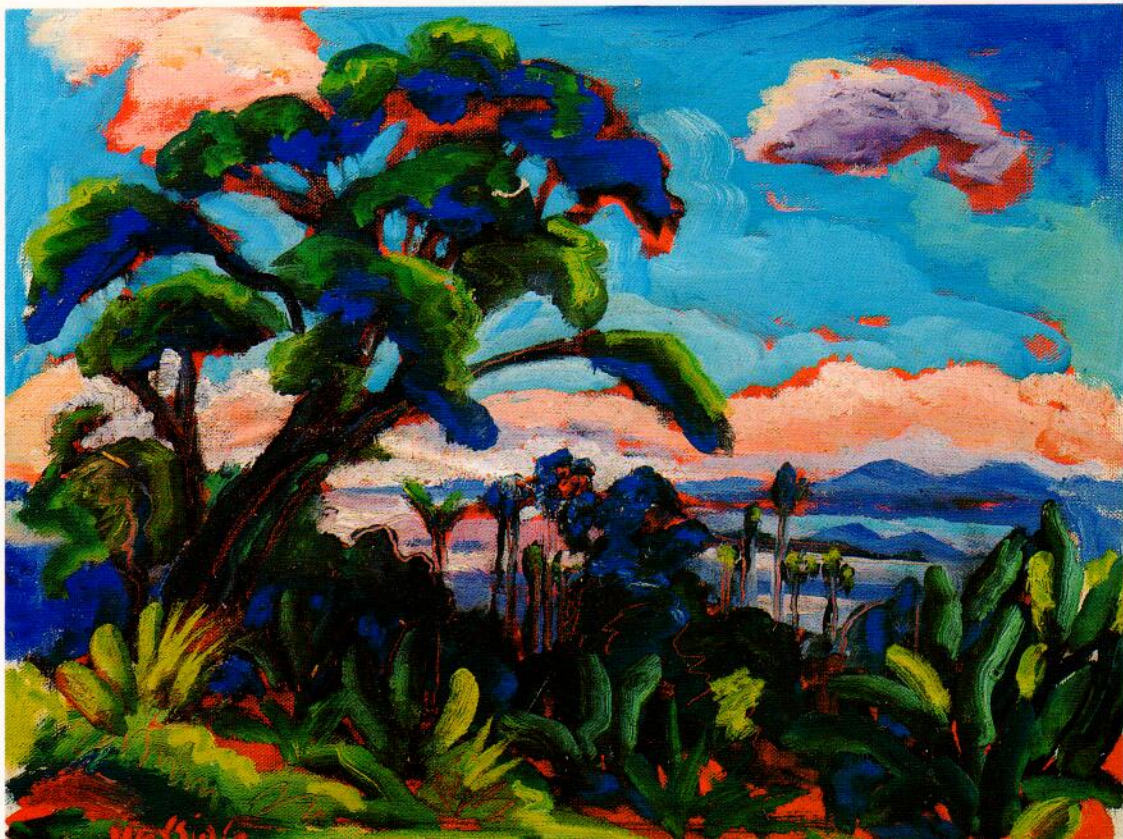
19. *Mountain Slope*, 1996  
Oil on Canvas, 22 x 27", JH285



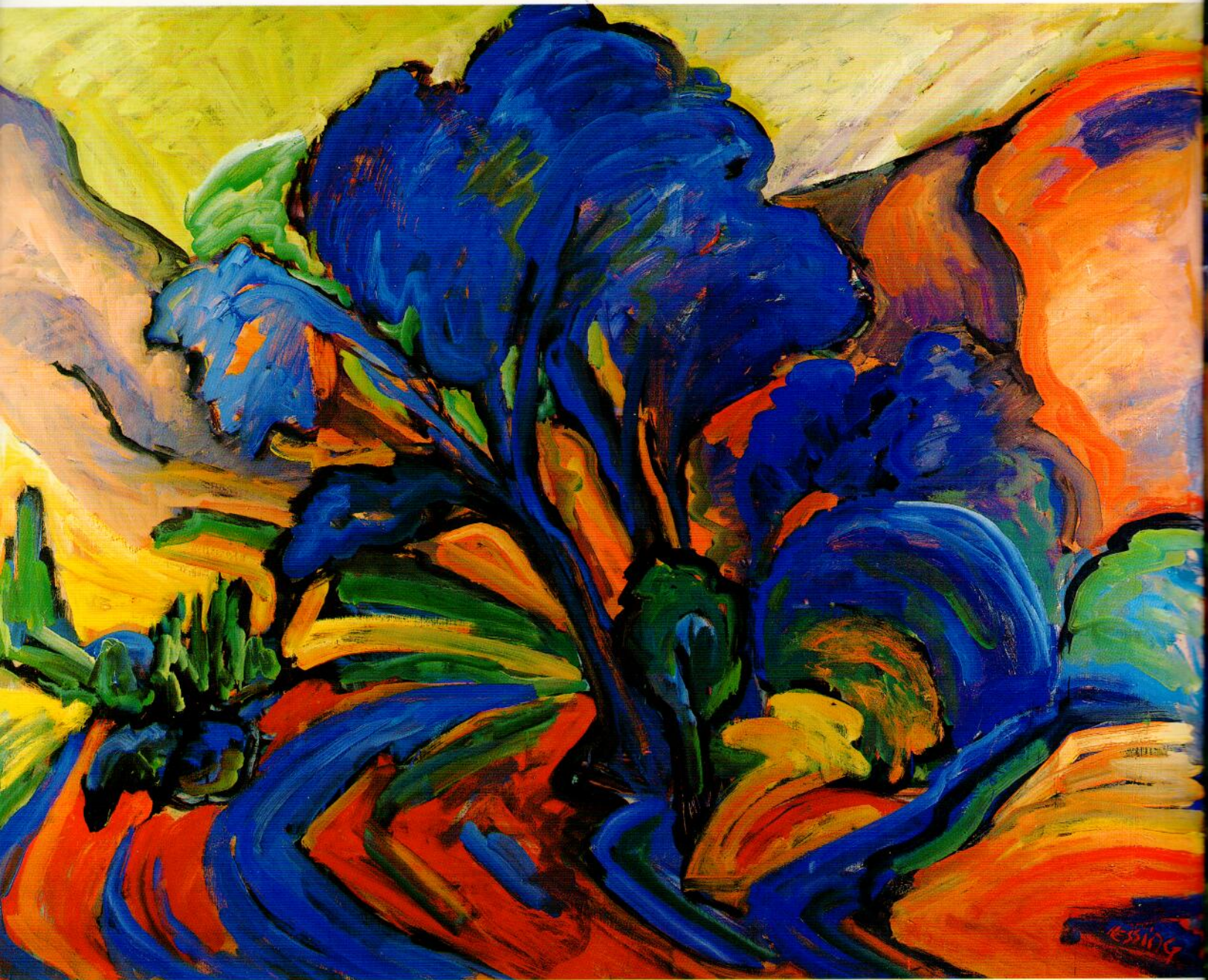


20. *Toroweap*, 1995  
Oil on Canvas, 12 x 16 $\frac{1}{4}$ " , JH255

21. *Les Saints*, 1995  
Oil on Canvas, 12 x 15 $\frac{3}{4}$ " , JH253



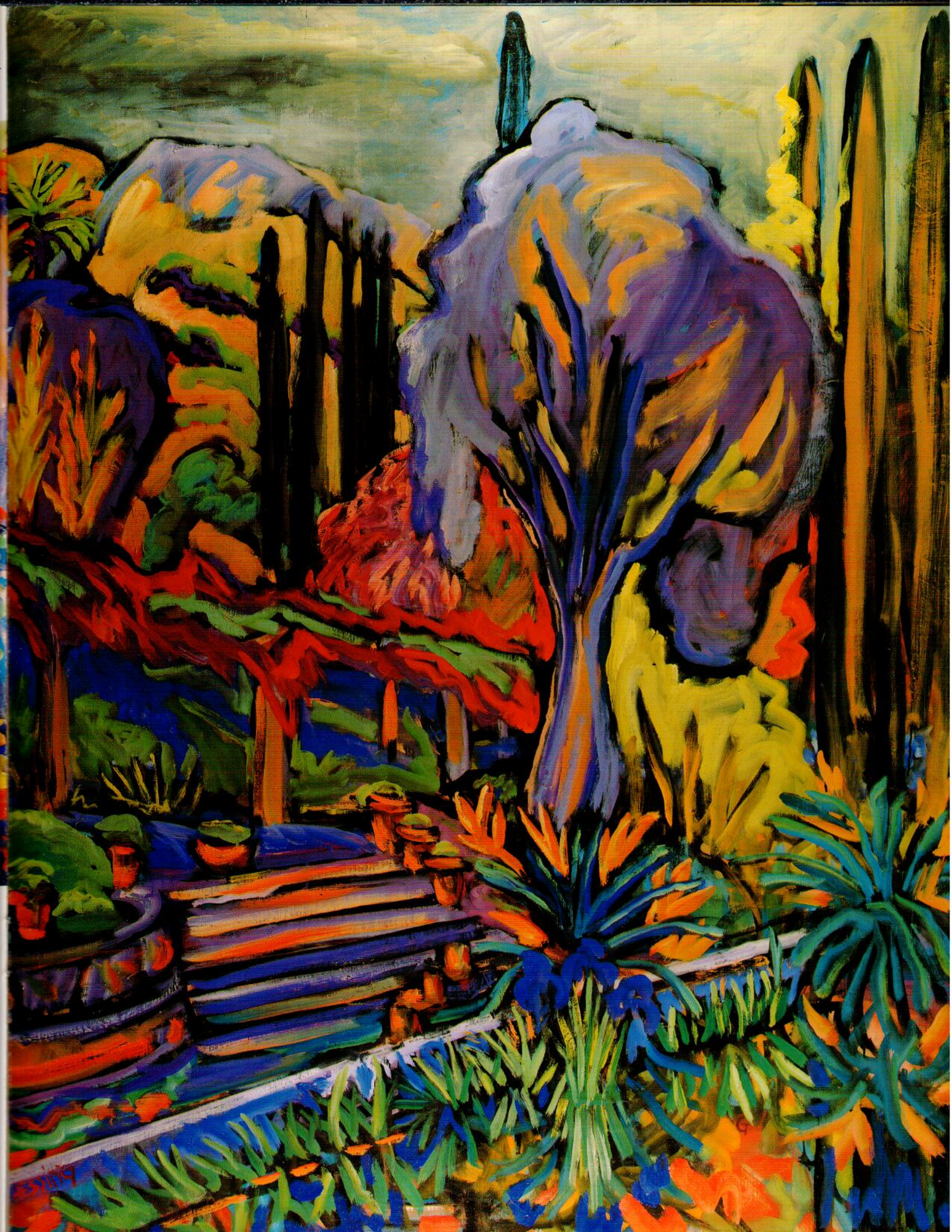




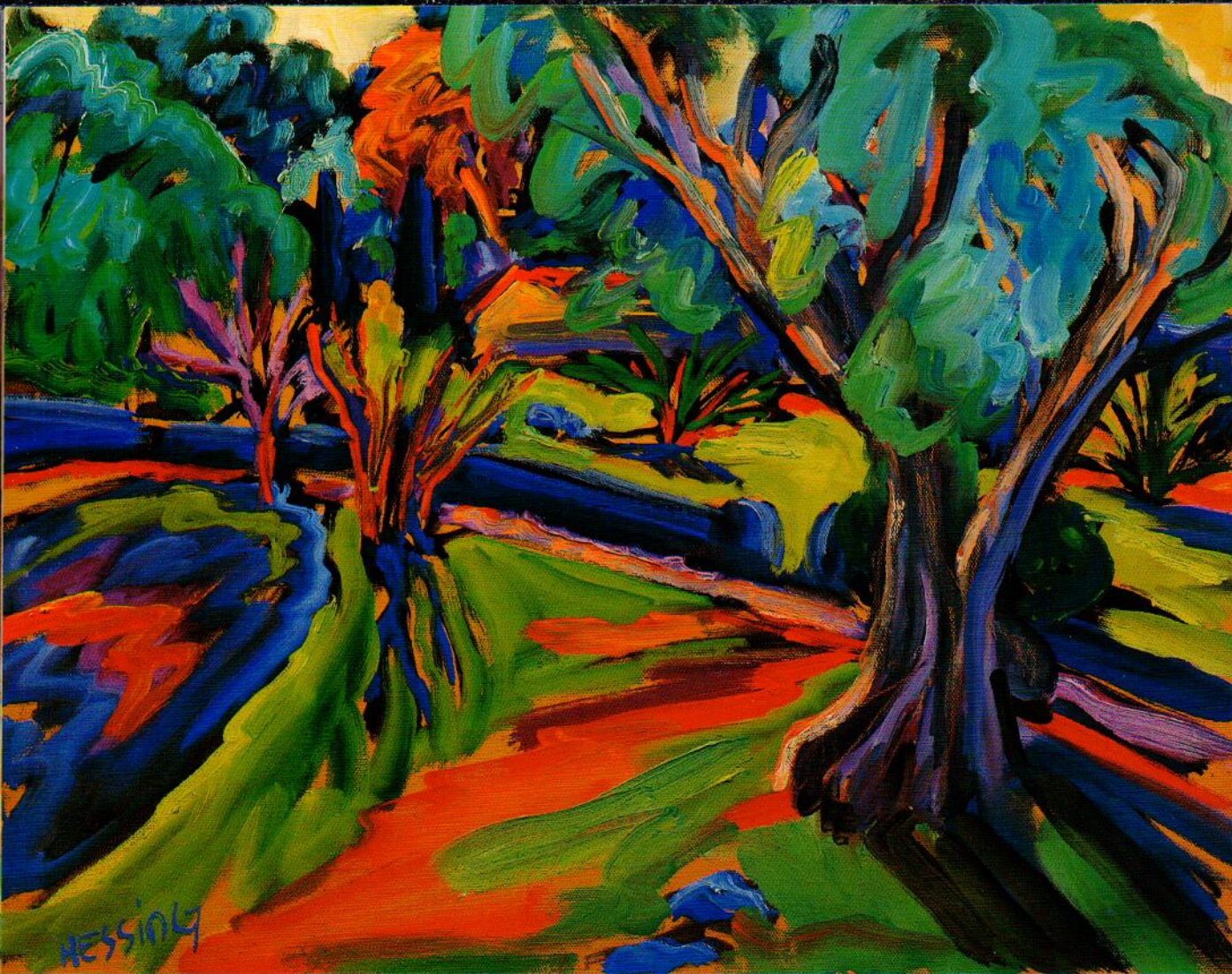
22. *Cottonwood*, 1995  
Oil on Canvas, 51<sup>1</sup>/<sub>4</sub> x 63<sup>3</sup>/<sub>8</sub>" , JH249

Opposite page:  
23. *Rainy Day in Menton*, 1995  
Oil on Canvas, 63<sup>3</sup>/<sub>8</sub> x 51" , JH250









24. *Garden*, 1995  
Oil on Canvas, 14<sup>7/8</sup> x 18", JH256



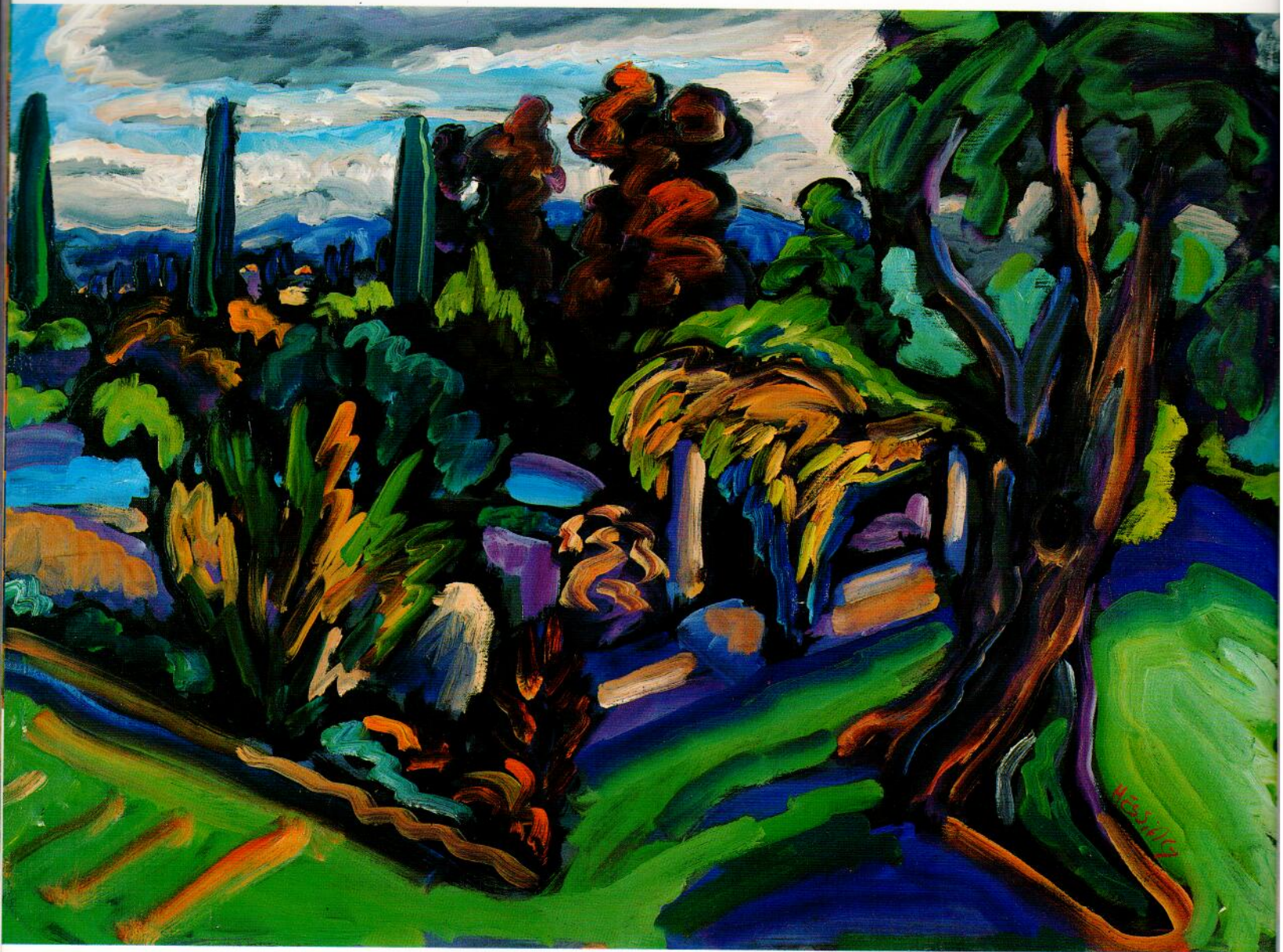
25. *St. Paul Hillside*, 1995  
Oil on Canvas, 13 x 16<sup>1/8</sup>", JH262





26. *Tropical Palms*, 1996  
Oil on Canvas, 46 x 65", JH297



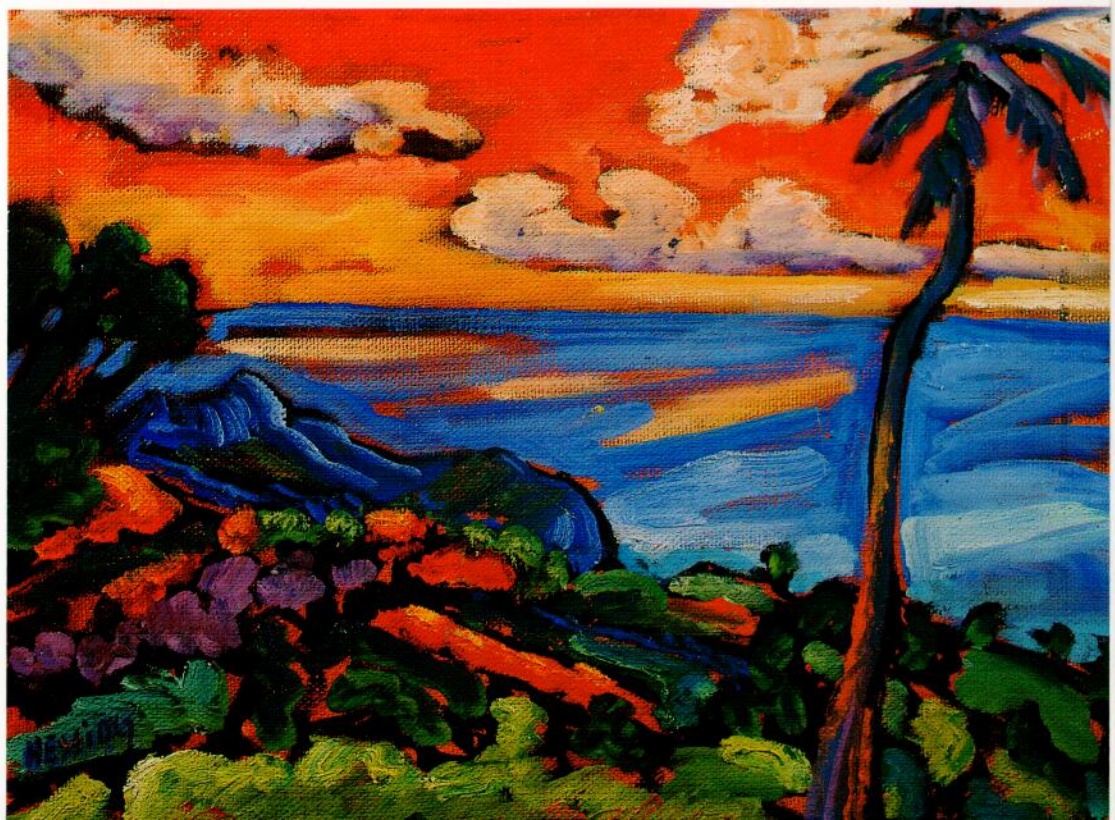


27. *Storm Coming*, 1996  
Oil on Canvas, 24 x 32", JH274





28. *Date Palm*, 1996  
Oil on Canvas,  
24 x 29", JH273



29. *Fugiere with Red Sky*, 1995  
Oil on Canvas,  
11 $\frac{3}{4}$  x 15 $\frac{3}{4}$ ", JH263



# JEFFREY HESSING

- 1952 Born in Brooklyn, New York.  
1977 Artist in residence, University of Kansas, Lawrence.  
1978-79 Resident, Millay Colony for the Creative Arts.  
1979 Resident, Virginia Center for Creative Arts.  
1980 Resident, Ossabaw Island Foundation.  
1980 Resident, Fondation Karolyi, Vence, France.

## EDUCATION

- 1972 State University of New York at Binghamton, B.A.  
1972-73 Private Study with Leonard Baskin

## SOLO EXHIBITIONS

- 1997 Pucker Gallery, Boston, Massachusetts  
1994 Pucker Gallery, Boston, Massachusetts  
Val Rahmeh, Menton, France  
Moulin des Artiste, Valbonne, France  
Centre Henri Matisse, Vence, France  
Villa Principe Leopoldo, Lugano, Switzerland  
1993 Galerie Musée, Nagoya, Japan  
1992 Pucker Gallery, Boston, Massachusetts  
Mas d'Artigny, Saint Paul de Vence, France  
1991 Galerie Leo Allamargot, Paris, France  
Galerie Leo Allamargot, Saint Tropez, France  
Unisys, Saint Paul de Vence, France  
1990 Maralyn Wilson Gallery, Birmingham, Alabama  
Centre Henri Matisse, Vence, France  
1989 Pucker Gallery, Boston  
Galerie Quincampoix, Paris, France

## COLLECTIONS

- Boston Public Library  
Rose Art Museum, Brandeis University



30. *Falaisi a St. Hilaire de Touvet*, 1996  
Oil on Canvas, 15 x 18", JH288



Back cover:

31. Diptych:

*Steeple*, 1996

Oil on Canvas, 38 x 52", JH296

*View from Chateau de Marçay*, 1996

Oil on Canvas, 52 x 35", JH296

Editor: *Jill K. Richardson*

Photography: *Sean Kirby, Valerie Nestor, Robert Zinck*

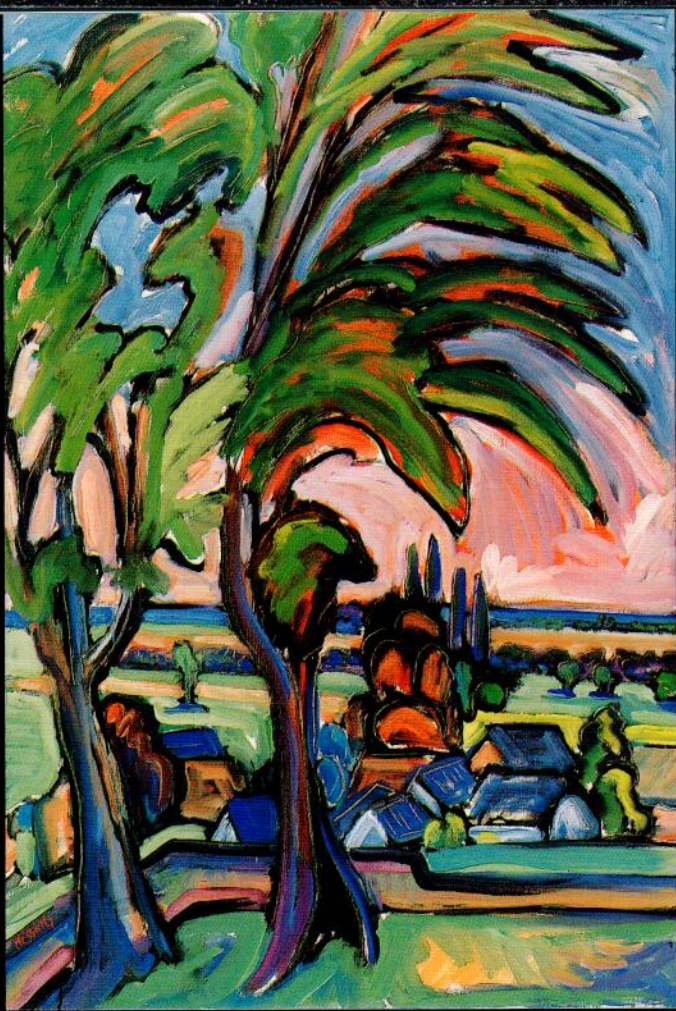
Designer: *Jennifer Bennett*

© Pucker Gallery, Boston 1997. Printed in Hong Kong by South China Printing Company (1988) Limited.



JEFFREY HESSING

PAINTINGS OF SOUTHERN FRANCE



19 APRIL – 15 MAY 1997

OPENING RECEPTION: SATURDAY, 19 APRIL 1997; 3 TO 6 PM  
The artist will be present. The public is invited to attend.

GALLERY HOURS:  
Monday to Saturday 10 am to 5:30 pm  
Sundays 1 to 5 pm.

PUCKER GALLERY  
171 Newbury Street  
Boston, MA 02116-2897  
(617) 267-9473 FAX# (617) 424-9759  
e-mail address: puckergall@aol.com

---

Bulk Rate  
U.S. Postage  
Paid  
Boston, MA  
Permit No. 1906

---

Member of the Boston Art Dealers Association.  
One hour free validated parking available on the corner  
of Newbury and Dartmouth Streets.

*Forwarding order and address correction requested.*