



# THE ETERNAL SOURCE

NEW WORK BY JIM SCHANTZ

PUCKER GALLERY • BOSTON



MONUMENT MOUNTAIN SUNSET, WINTER  
Oil on canvas  
48 x 48"  
JMS788

# THE ETERNAL SOURCE

## NEW WORK BY JIM SCHANTZ

This is my second exhibition since the beginning of the pandemic. During this time, nature as a subject has become even more essential as a place of respite and healing. The works in this exhibition are divided between oil painting and pastel. Each has its own unique qualities and offers different approaches to interpreting nature. This distinction between them allows me to investigate different sensibilities. The larger canvases favor a gestural approach, whereas pastels require a subtle and delicate application. I love finding balance between the two mediums and how they feed off one another.

My intention within the subject matter also balances two arenas—the environment and the spirit. The Housatonic River has inspired artists and poets for generations, offering a place for quiet meditation. It continues to be a source of inspiration for me, and a symbol of hope. This resource, once on the verge of destruction due to PCB pollution, has through environmental efforts led by the Housatonic River Initiative rebounded as a resource for wildlife. Our efforts to protect the environment are more important than ever and water and air are of prime concern. Rivers are a source for life, from which a healthy evolution depends, and a reminder of how we must be vigilant with protecting our natural resources.

Monument Mountain has been an iconic subject, visible from many perspectives throughout the area. It was a sacred site of the Mohican Nation, who lived in the Berkshires for thousands of years before the arrival of the Europeans. With the guidance of the Stockbridge-Munsee Community, the top of the mountain formation is now called Peeskawso Peak, which means “virtuous woman” in the Mohican language. Its iconic form is like a gentle sleeping figure, perhaps Mother Nature herself, and these paintings are tributes to her.

My pastels of Konkapot Brook (named after the Mohican sachem, or chief) offer a place for quiet reflection. There is a sacred atmosphere here. Gould Field is one of the many land trusts in the area, just beyond the south gate of Tanglewood, summer home of the Boston Symphony Orchestra. I often return to this field and the surrounding woodland for contemplation. The meadow frames Monument Valley with Monument Mountain as the centerpiece. The efforts of the Berkshire Natural Resources Council and other organizations have helped to preserve open space for generations. My work preserves a moment of time and a certain light.

What keeps me motivated is a constant amazement of the power of nature—the endless visual stimulus, the beauty that surrounds us. These are places that one can escape to and find healing during difficult times. My intent with the work is to bring the viewer into a meditative place and serve as a reminder of the importance of the healing aspects of nature.

Each artist is on a journey and has to persevere to continue to work. With the support of my family and friends, and through my career as a gallerist working with other artists, I have been lucky to have the opportunity to create the work that I feel is important. It is not always easy, but it is rewarding to be able to paint, to make unique work with my own sensibility.

It is a privilege to present this new body of works at Pucker Gallery. I would like to acknowledge Bernie and Sue Pucker, along with the team at Pucker Gallery, who over the years have been so supportive of my work. I would also like to acknowledge my mentor, Wayne Thiebaud, who we lost this past year. He has been a beacon of inspiration.

— JIM SCHANTZ, 2022



WINTER STUDY, STOCKBRIDGE BOWL  
Oil on panel  
10 x 10"  
JMS793



WINTER DAWN HOUSATONIC  
Oil on canvas  
16 x 8"  
JMS791



NOVEMBER SUNSET, MONUMENT MOUNTAIN  
Oil on linen  
14 x 14"  
JMS782



WINTER DUSK, SCHROON LAKE  
Oil on canvas  
48 x 60"  
JMS769



WINTER RIVER SUNSET  
Oil on linen  
12 x 12"  
JMS792



HEMLOCK FULL MOON  
Oil on panel  
18 x 18"  
JMS790



GLENDALE PINES SUNSET  
Oil on panel  
20 x 20"  
JMS784



GOULD FIELD, SUMMER SUNSET  
Oil on linen  
18 x 48"  
JMS785



WINTER SUNSET, KONKAPOT BROOK  
Pastel on Stonehenge paper  
19 x 27"  
JMS776





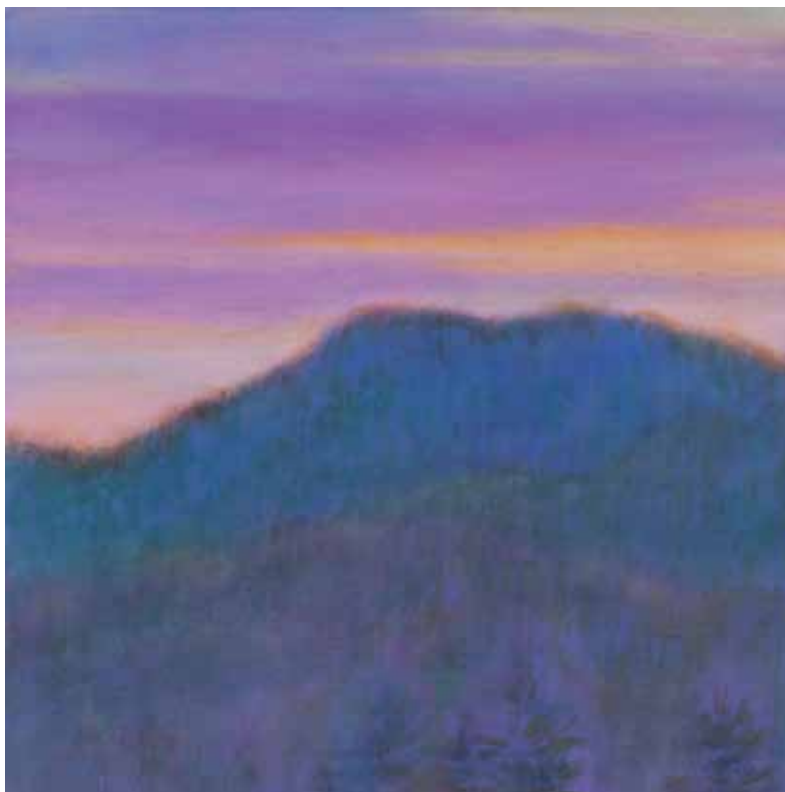
WINTER SUNSET, MONUMENT MOUNTAIN  
Pastel on Stonehenge paper  
19 x 27"  
JMS775



**SPRING STUDY, ALDER BROOK**  
Oil on panel  
10 x 10"  
JMS789



**KONKAPOT BROOK SUNSET, WINTER**  
Pastel on Stonehenge paper  
19 x 27"  
JMS777



**DECEMBER SUNSET, MONUMENT MOUNTAIN**  
Oil on canvas  
14 x 14"  
JMS771



**FEBRUARY HOUSATONIC SUNSET**  
Pastel on Stonehenge paper  
14.5 x 21.5"  
JMS779



LATE SUMMER, HOUSATONIC BEND SUNSET  
Pastel on Stonehenge paper  
18 x 26"  
JMS778



KONKAPOT BROOK, TOWARDS MONUMENT MOUNTAIN  
Pastel on Stonehenge paper  
20 x 28"  
JMS780



WINTER DUSK, HOUSATONIC BEND  
Pastel on Stonehenge paper  
18 x 26"  
JMS781

Jim Schantz received his master's degree in Painting at University of California, Davis and his Bachelor's in Fine Arts at Syracuse University. He also studied at The Hornsey School of Art, London and at the Skowhegan School in Maine. His works are in numerous public collections, including: The Berkshire Museum, The Center for Spiritual Life at Emerson College; Lowe Art Museum, Syracuse University; The Art Complex Museum, Duxbury MA; Nelson Museum, U.C. Davis; Rose Art Museum, Brandeis University; Skidmore College; Simon's Rock of Bard College, and University of Massachusetts. Jim has had several solo exhibitions at Pucker Gallery in Boston. His work has also been featured in exhibitions at the Berkshire Museum, The

Springfield Museum of Fine Arts, The Fuller Museum of Art, Brockton, The Albany Institute of Art and the Brooklyn Museum. He currently resides in Glendale, MA.





HOUSATONIC EVENING REFLECTION  
Oil on canvas  
48 x 48"  
JMS787

PUCKER

ESTABLISHED 1967 BOSTON

GALLERY

PUCKER GALLERY

240 Newbury Street, 3rd floor  
Boston, MA 02116  
617.267.9473  
contactus@puckergallery.com

GALLERY HOURS:

Monday through Saturday  
10:00 AM to 5:30 PM  
Sunday 1:00 to 5:00 PM

We are open to all and taking the necessary precautions for visitor and staff safety. We welcome appointments to maximize visitor experience.

Pucker Gallery is a member of the Boston Art Dealers Association and the New England Appraisers Association.

CREDITS:

Design: Leslie Anne Feagley

Editor: Jeanne Koles

Photography: John Davenport  
and Kim Saul

© 2022 Pucker Gallery

Printed in the United States  
by Modern Postcard

# THE ETERNAL SOURCE

NEW WORK BY JIM SCHANTZ

DATES:

15 October through 27 November 2022

PUBLIC OPENING RECEPTION:

Saturday 15 October 2022 | 3:00 to 6:00 PM

The artist will be present.

ONLINE EVENTS:

Please visit [www.puckergallery.com](http://www.puckergallery.com) for a list of virtual gatherings and events accompanying *The Eternal Source*



SEPTEMBER, ALDER MEADOW (Triptych)  
Oil on canvas  
22 x 22" each  
JMS774



Cover:  
HOUSATONIC DUSK  
Oil on canvas  
48 x 48"  
JMS786

Please visit [www.puckergallery.com](http://www.puckergallery.com) to view current and past exhibition catalogues and subscribe to the *Artwork of the Week* email list.