

Boldly Balanced:
Pucker Gallery

Mobiles by Mark Davis
Boston



Boldly Balanced:

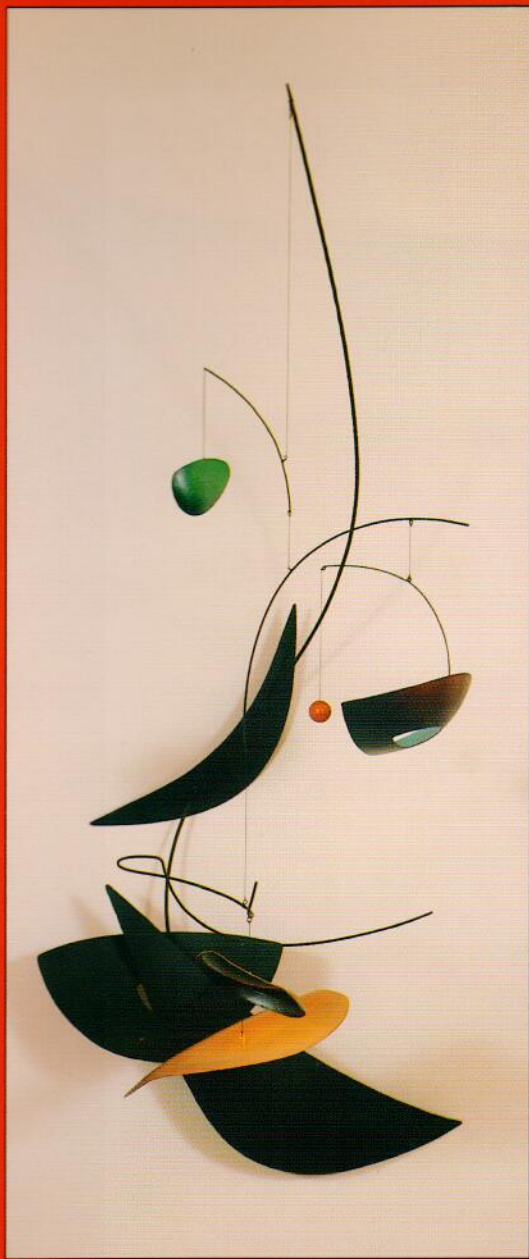
Honesty is the source of all boldness. Ironically, it is also the source of all balance. The lack of self-consciousness that allows a child to speak with startling clarity is the same force that keeps a kid sane where an adult might freak.

Mark Davis's most recent sculpture combines similar kinds of boldness and balance, forthrightness and equilibrium, insight and integrity. His work is moving, subtly and palpably, toward the sort of luminous and visionary sparkle I associate with the dying, the Buddha and the newly minted. It's the real thing.

I don't know if it's always been the case that the bases of Davis's sculptures declared themselves as balletic leaps, but they do now. It's easy enough to attend to the ethereal, kinetic upper machinations of each of these works, just as it's easy to let one's eyes fall only on the ballerina soaring mid air in a pas-de-deux. Harder to attend is the male behind her, the hands at the waist, the fixed legs. In the same way, the places where Davis's constructions meet the ground prove self-effacing but crucial to an appreciation of his masterful choreography.

In "A Force of Will" a pointed, black, ribbony base, with a central body like an abstracted sea lion, holds one tapering arm up to heaven while its wide counterpart touches the ground. The colors, the movement, and the interacting arrangement of shapes that swim above the base of the sculpture will prove the source of most people's delight. For me, the source is its toe hold, its remarkable footing: delicate and strong, purposeful and fine, exact yet seemingly nonchalant.

In other works the bases make what occurs above them look almost incidental, as in "In Flight" which, depending on how you look at it, reads as if the opened jaws of its base were having an argument with the sur-



DISCREET ENCOUNTER, 2003

Hanging Mobile: steel, aluminum and brass with acrylic colors
47 x 23 x 25"
MD265

COVER:

SHINING SPLENDOR, 2001

Outdoor Mobile: bronze base with polished stainless steel top
74 ³/₄ x 76 ¹/₂ x 51"
MD233

Mobiles by Mark Davis

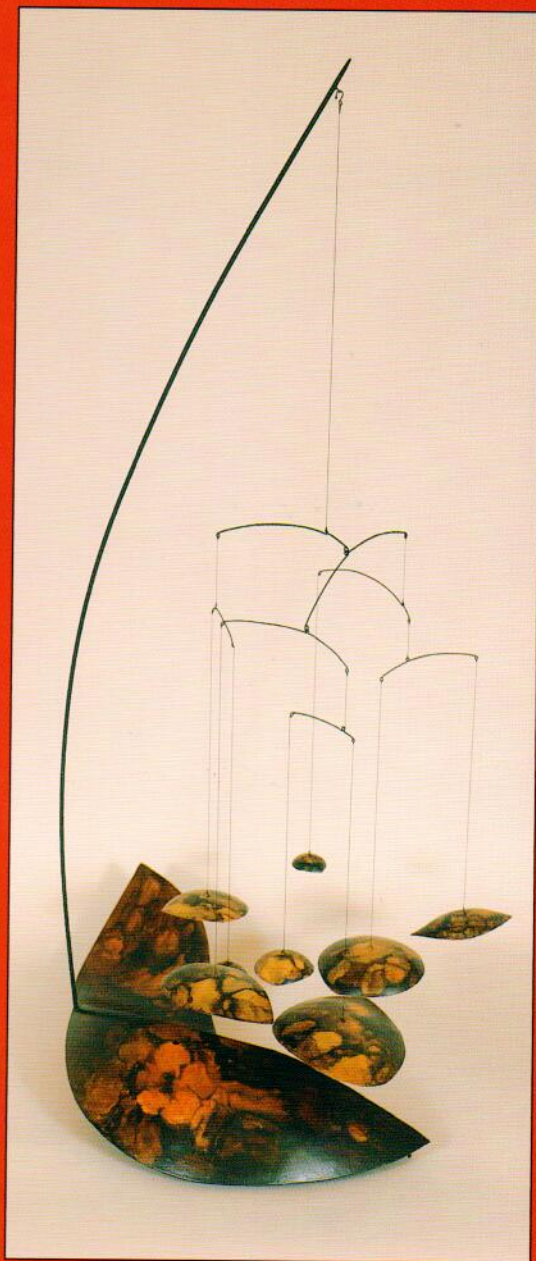
rounding confetti - and winning. In "Inversion" the gold pelvic bone of the base makes the crescents circling above it look, well, flighty. And the undulating black wave that forms the base of "Daybreak" suggests that the excitement about the dawn isn't so much about the day ahead as the night behind.

"The Clever Conversation" and "From Above," which both date from 2003, point to a new turn in Davis's work since they mix up the idea of base and appendage, above and below, motion and stasis. In each of these works you can't tell at first glance what moves and what doesn't, what's stationary and what's mobile. "The Clever Conversation" seems to have no proper foundation while "From Above" seems to have nothing but foundation. The former reads like stenciling that escaped from a muralist while the latter, seen from above, looks like stones in a tidal pool.

What these pieces indicate is another property of Mark Davis's art that's also easily overlooked, namely their place as sculpture, sculpture that also happens to move - as opposed to mobiles.

A newspaper report about a recently discovered play by Mark Twain referred to the author as "America's greatest humorist." I was offended, not because it's untrue but because the term reduces and pigeonholes and otherwise diminishes Twain's magnitude. Humor doesn't get the respect it deserves, and neither does delight - the quality in Mark Davis's works that inspires people to refer to them as mobiles. Mobiles are playful, fanciful, lighthearted; they delight. Sculpture challenges, intrigues, confronts, converses. And it delights.

Twain was a great novelist. Davis is a great sculptor.
— Christopher Millis



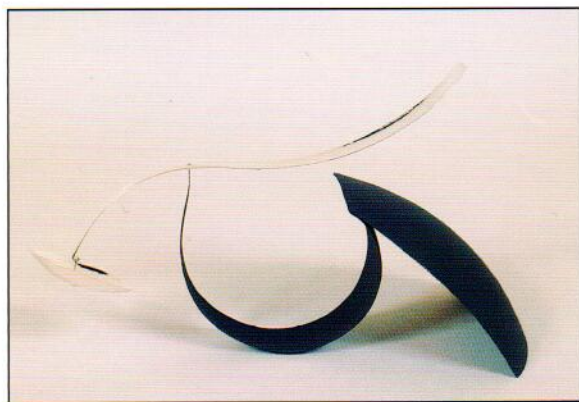
FROM ABOVE, 2003
Standing Mobile: brass and steel with
oil color and glazes
43 x 28 x 25"
MD267

SHINING ATLANTIS, 2001

Standing Mobile: sterling silver with steel wire

22 3/4 x 26 x 20"

MD228

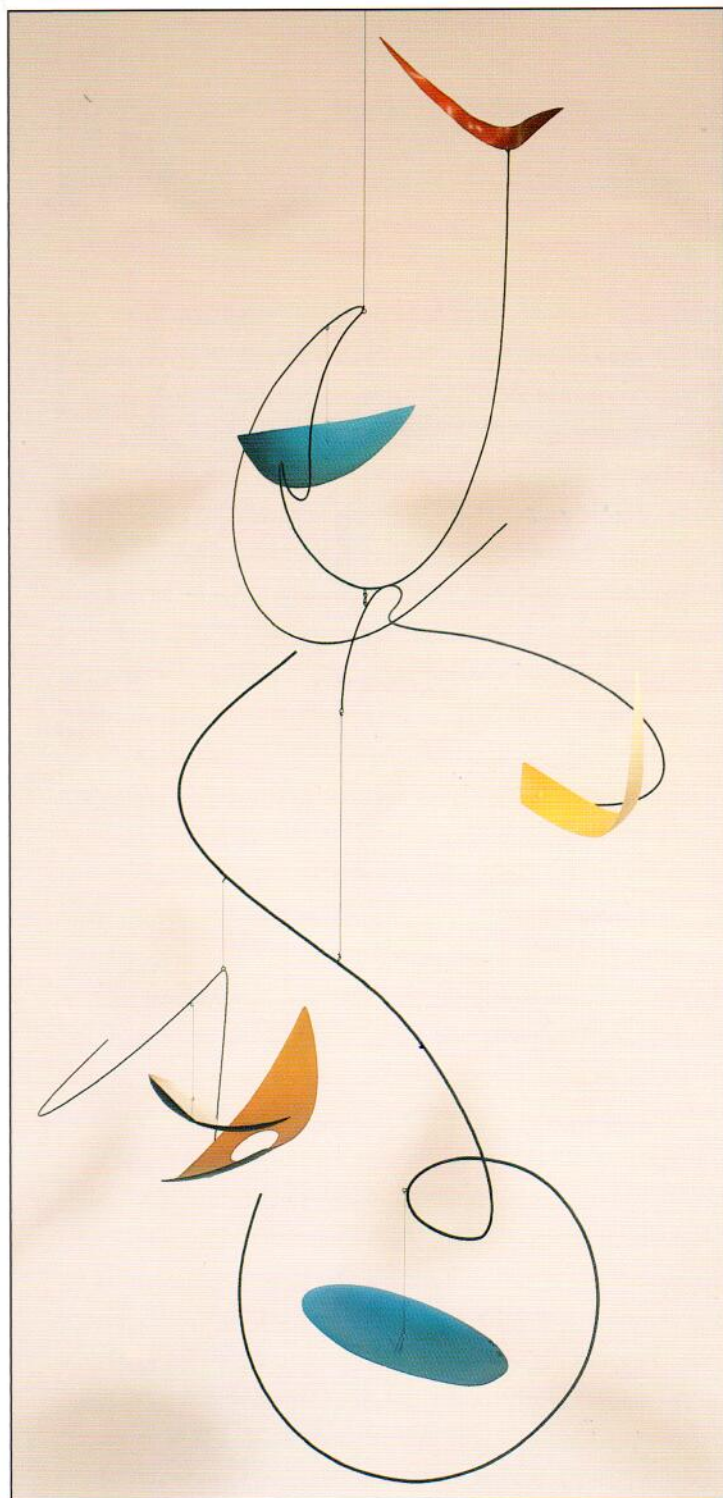


A PROUD NOTE, 2003

Standing Mobile: brass with black lacquer and sterling silver

8 x 12 1/2 x 11"

MD276

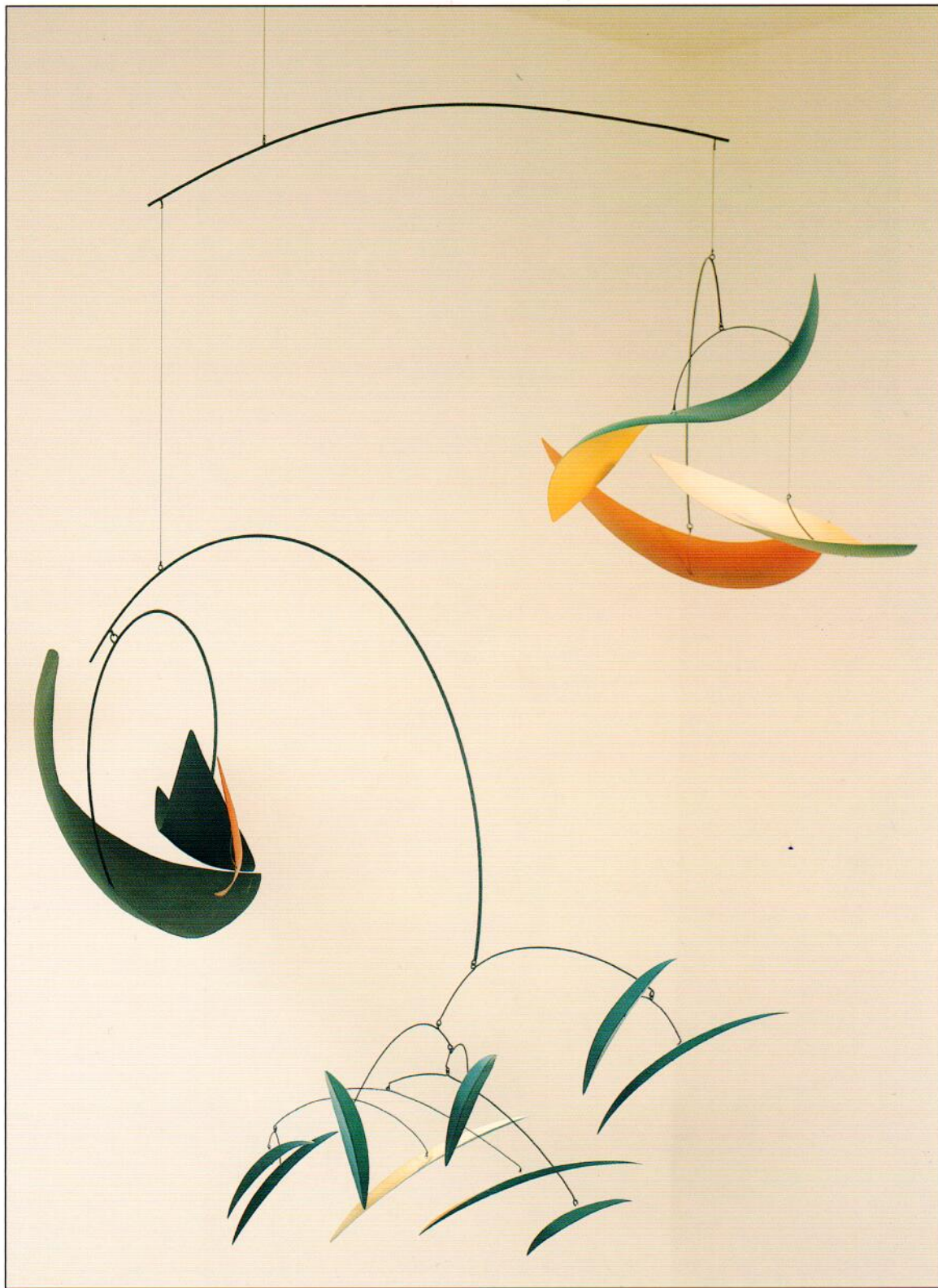


COSMIC GLORY, 2002

Hanging Mobile: aluminum and steel wire with lacquer colors

63 x 36 x 36"

MD236



THE ORDER
OF THINGS
TO COME,
2003
*Hanging
Mobile:*
brass,
aluminum
and steel
with acrylic
colors
72 x 72 x 72"
MD272

THE FIRST RAY
OF DAWN, 2003
Standing Mobile:
patinated brass
with steel
43 x 29 x 24 1/2"
MD268



A CALM
MOONLIT
MOMENT, 2002
Standing Mobile:
patinated brass
and blackened
steel
10 1/2 x 13 x 21"
MD242



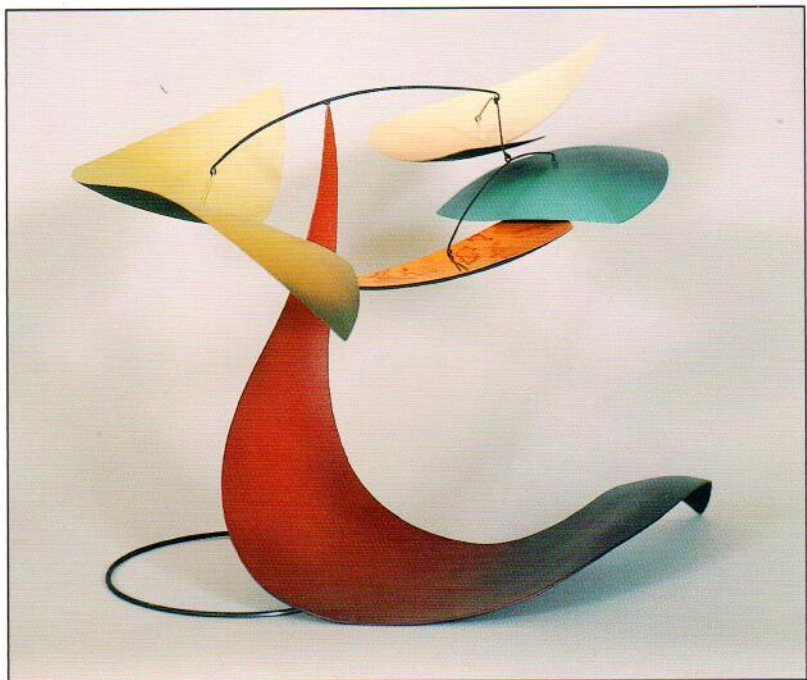


IN FLIGHT, 2002
Standing Mobile: painted
aluminum with steel base
31 x 14 x 25"
MD261

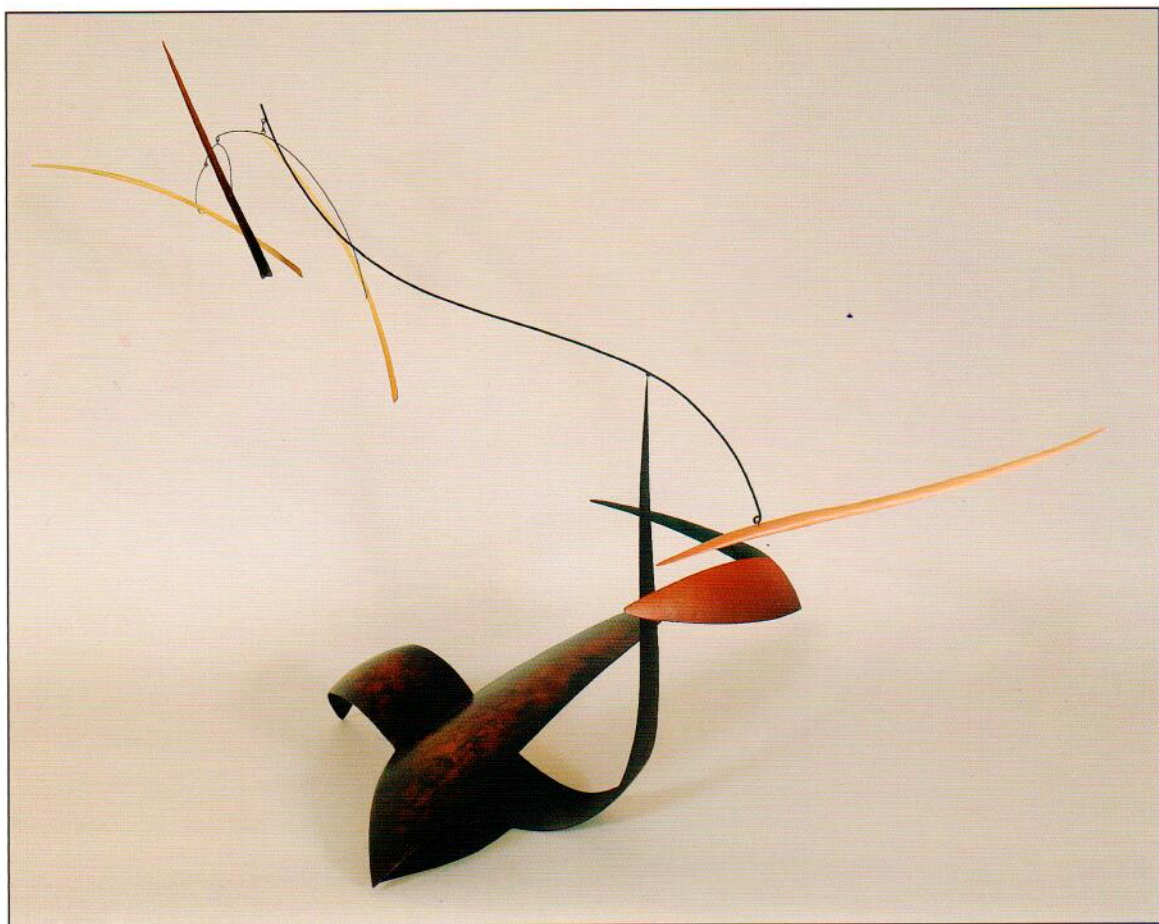


DAYBREAK, 2002
Standing Mobile: brass with 18k gold
plate and black acrylic
12 x 20 1/2 x 17"
MD254

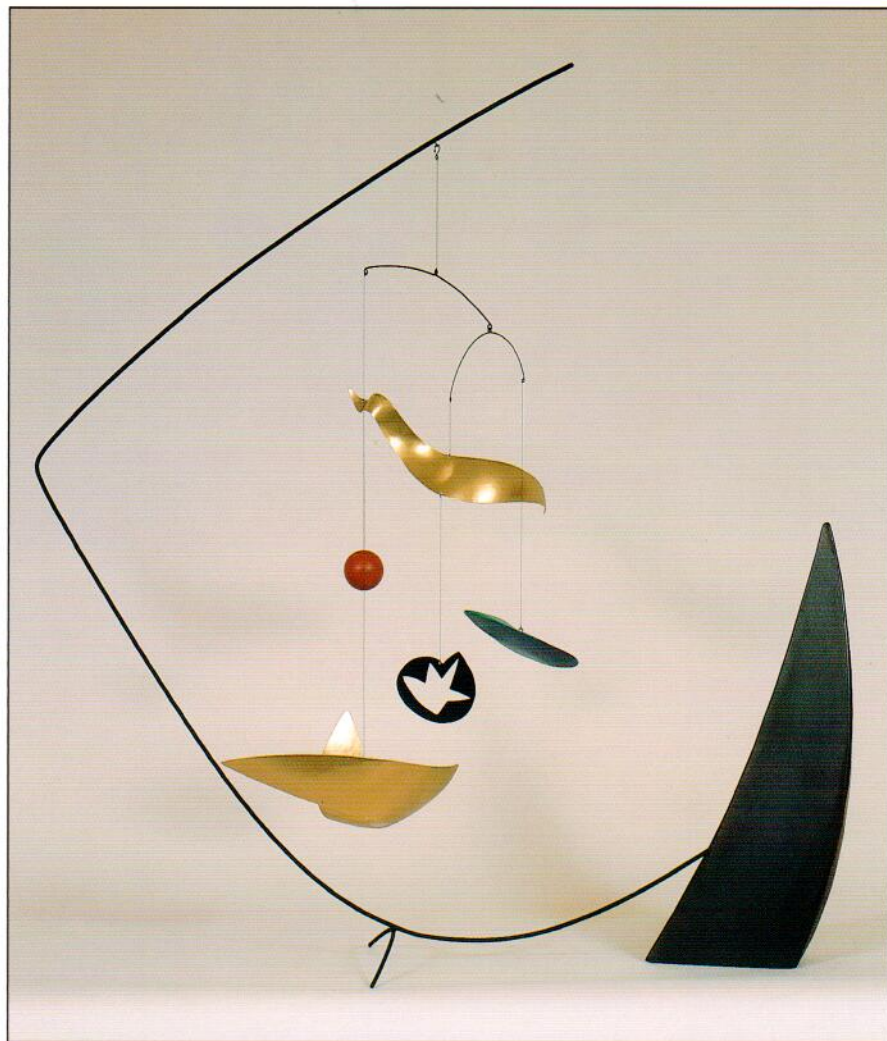
A SUBTLE SHIFT, 2001
Standing Mobile: brass,
aluminum and steel with
acrylic colors
15 x 27 1/2 x 27"
MD226



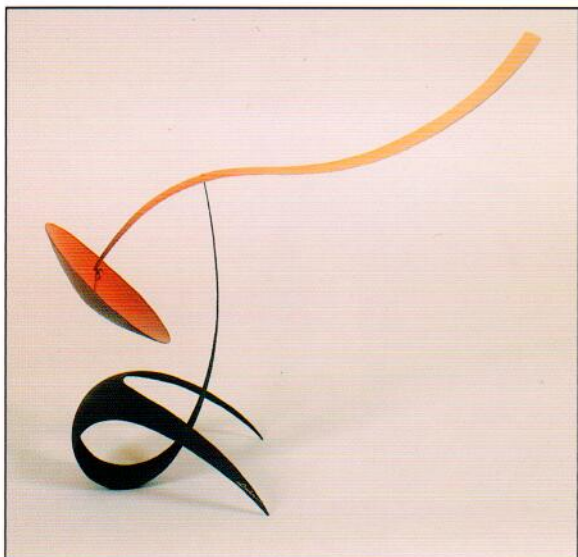
A FORCE OF WILL, 2002
Standing Mobile: brass and
steel with acrylic colors
30 x 37 x 21"
MD250



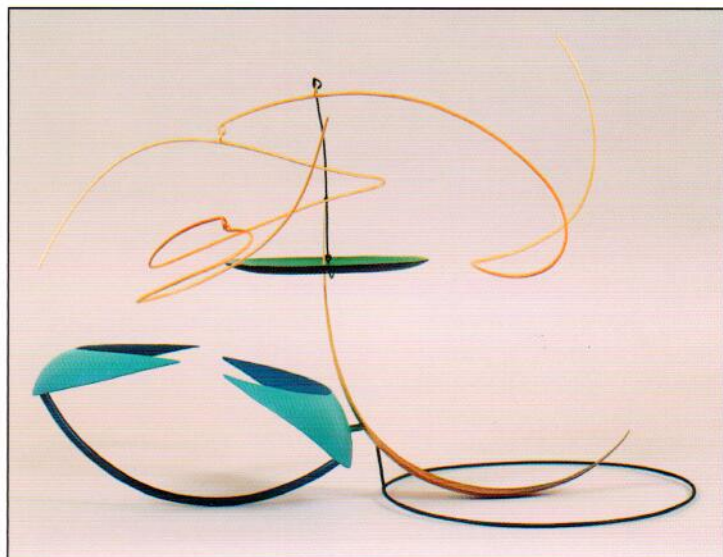
ALCHEMY, 2002
Standing Mobile:
brass, aluminum,
and steel with
acrylic colors
30 1/2 x 27 x 12"
MD262



A NEW TRICK,
2003
Standing
Mobile:
brass with
black lacquer
and acrylic
color
11 x 13 x 13"
MD277



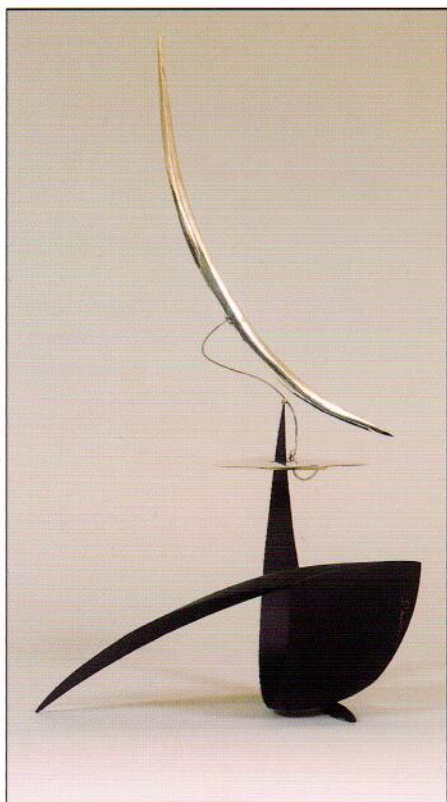
ARTIST'S ENERGY,
2002
Standing Mobile:
brass and steel
wire with acrylic
colors
10 1/2 x 19 1/2 x 17"
MD257



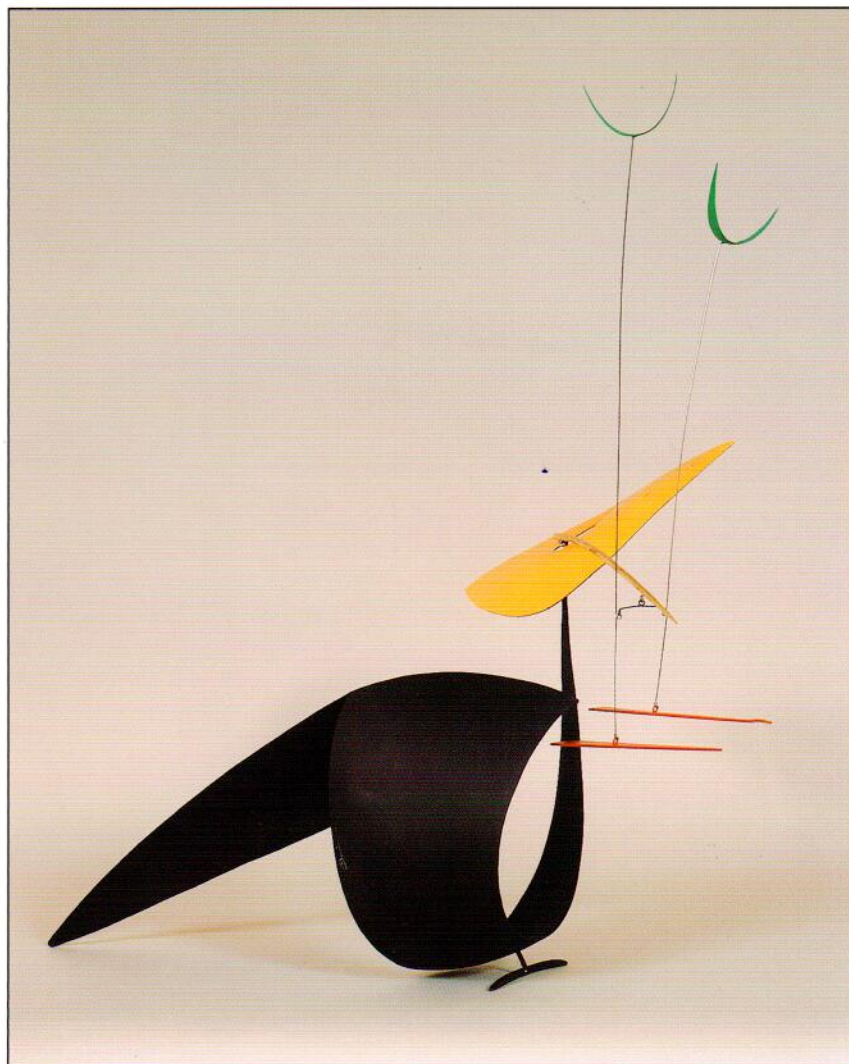
ON A PLANET, 2001
Standing Mobile: brass,
aluminum and steel with
acrylic colors
16 x 20 x 26"
MD216



AN ELEGANT TURN,
2002
Standing Mobile: steel
and brass with stainless
steel wires and 23k gold
leaf
29 x 16 1/2 x 12"
MD248



TRUE ELEGANCE II, 2002
Standing Mobile: sterling silver and
brass with black lacquer
17 1/2 x 10 x 6 1/2"
MD245

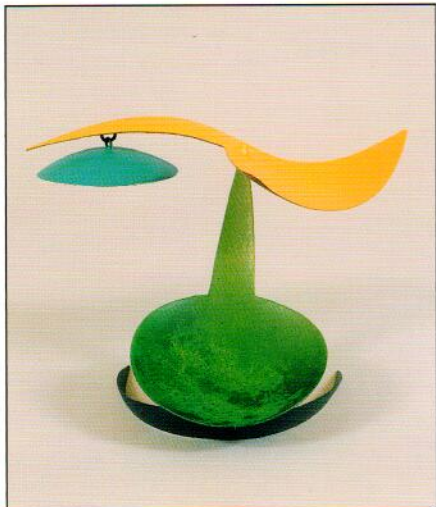




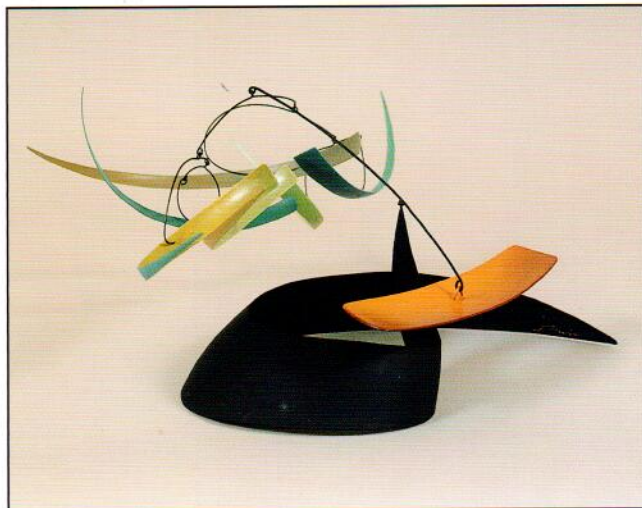
THE BRIGHT ONE, 2002
Standing Mobile: sterling silver
9 x 14 x 14"
MD258



THE FORCES OF NATURE,
2003
Standing Mobile:
aluminum, brass and steel
with patina and acrylic colors
27 1/2 x 34 x 16"
MD266



A SUNNY DISPOSITION, 2003
 Standing Mobile: brass with
 acrylic colors
 5 1/4 x 9 x 8"
 MD275



UNRULY
 EXPECTATIONS,
 2003
 Standing
 Mobile: brass
 and aluminum
 with lacquer
 and acrylic
 colors
 7 x 14 x 18"
 MD273



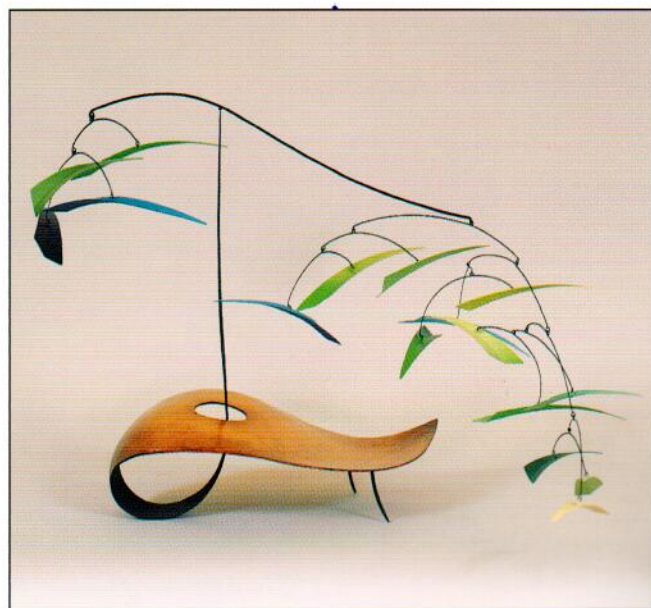
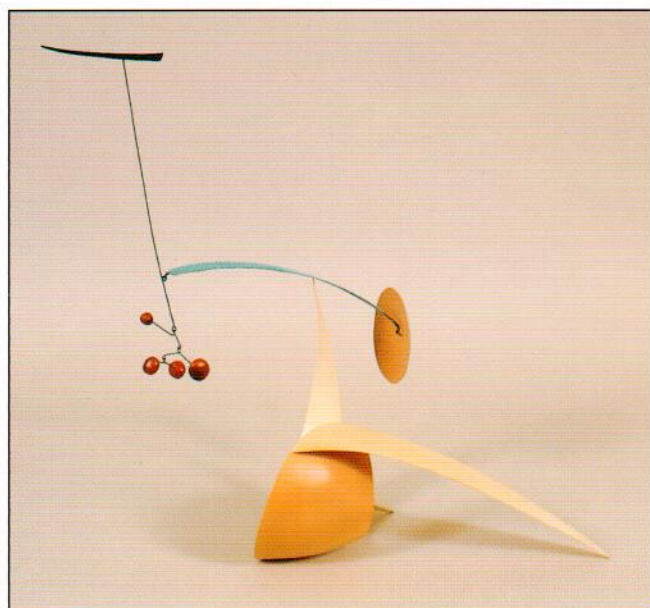
GARDEN OF LIGHT, 2001
 Standing Mobile: brass,
 aluminum and steel with
 acrylic colors
 27 1/2 x 21 x 20"
 MD217

AN ORGANIZED
DISPOSITION, 2003
Standing Mobile: brass
and compound acrylic
colors
17 x 12 x 21"
MD274

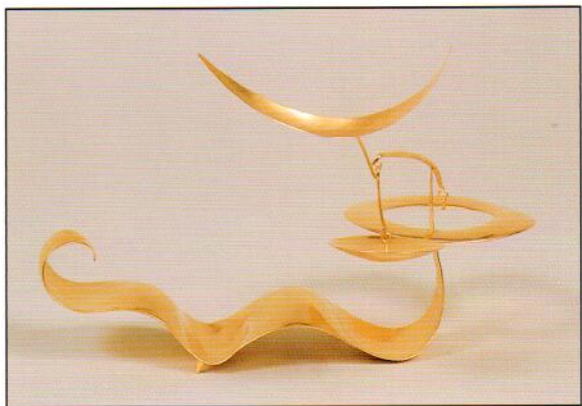


ACROSS THE
GALAXY, 2003
Standing Mobile:
mahogany carved
pieces with wooden
pieces, 23K gold and
steel wires
25 x 35 x 23"
MD269

GENTLE BREEZES,
2002
Standing Mobile:
steel, brass and
aluminum with acrylic
and oil color
16 1/2 x 26 x 9 1/2"
MD247

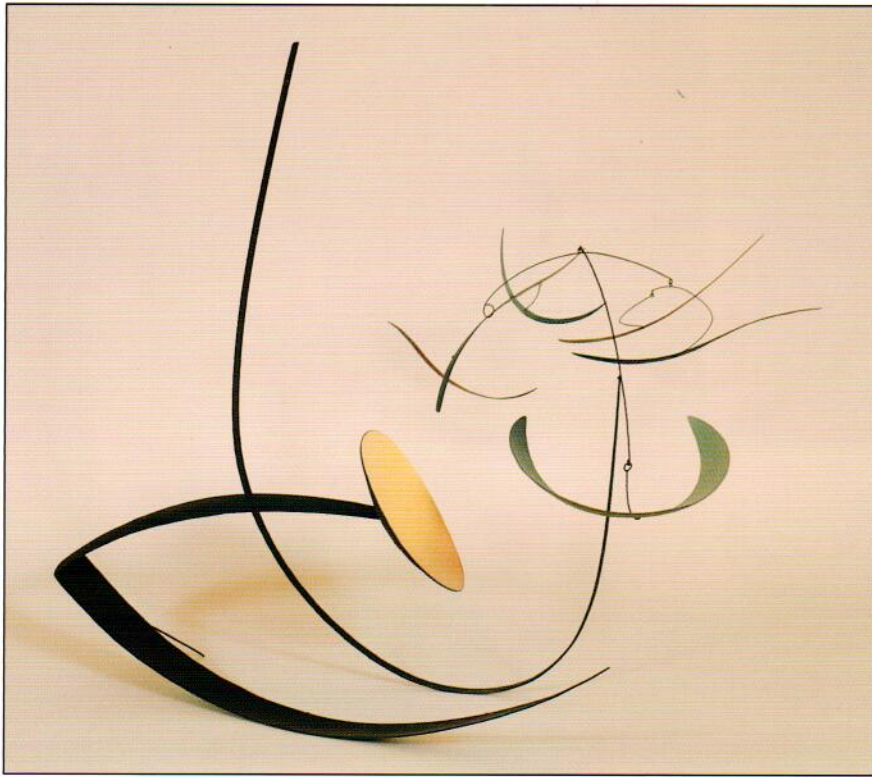


BASILISK, 2002
Standing Mobile: brass with 18k gold
7 x 12 x 9 1/2"
MD241



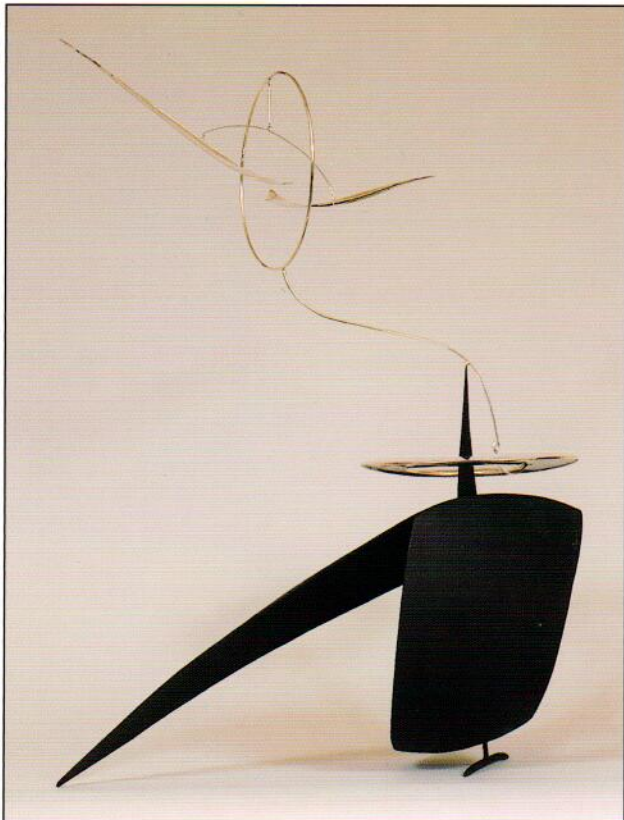
BOLERO, 2001
Wall Mobile: steel and aluminum
with acrylic colors
32 x 24 x 27"
MD222

POINTS OF LIGHT, 2001
Standing Mobile: steel, brass and
aluminum with acrylic colors
25 x 20 x 15 3/4"
MD220



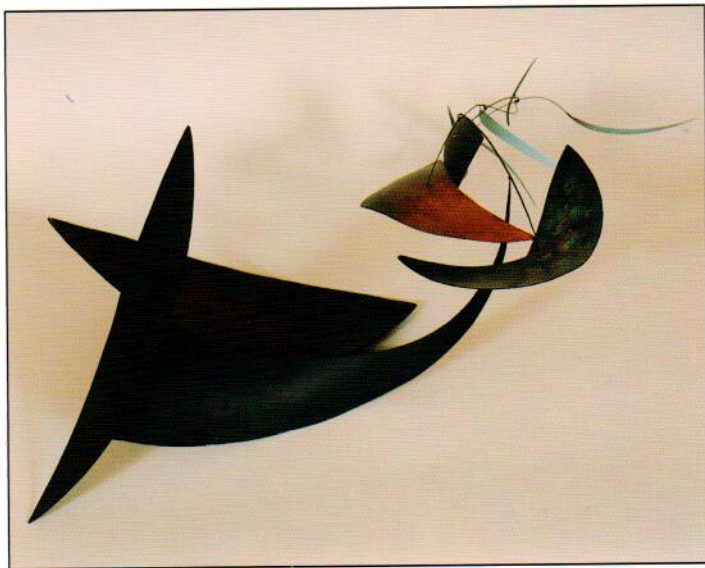
THE CLEVER CONVERSATION, 2003
Standing Mobile: brass, aluminum and
steel with acrylic colors
23 x 24 x 24"
MD271

A NEW UNDERSTANDING, 2003
Standing Mobile: brass with
acrylic colors
16 x 24 x 16"
MD264

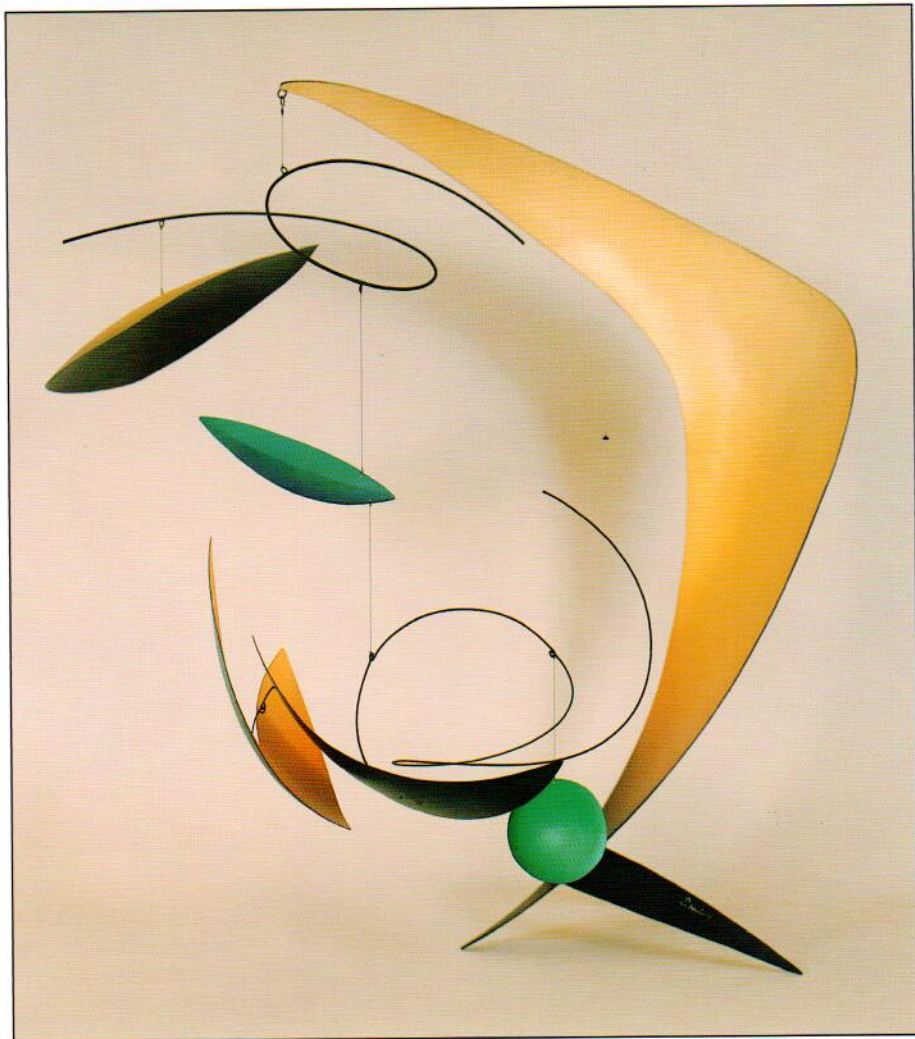


ESSENTIAL ELEGANCE, 2002
Standing Mobile: sterling silver, lead
and steel with black lacquer
23 x 11 x 38"
MD246

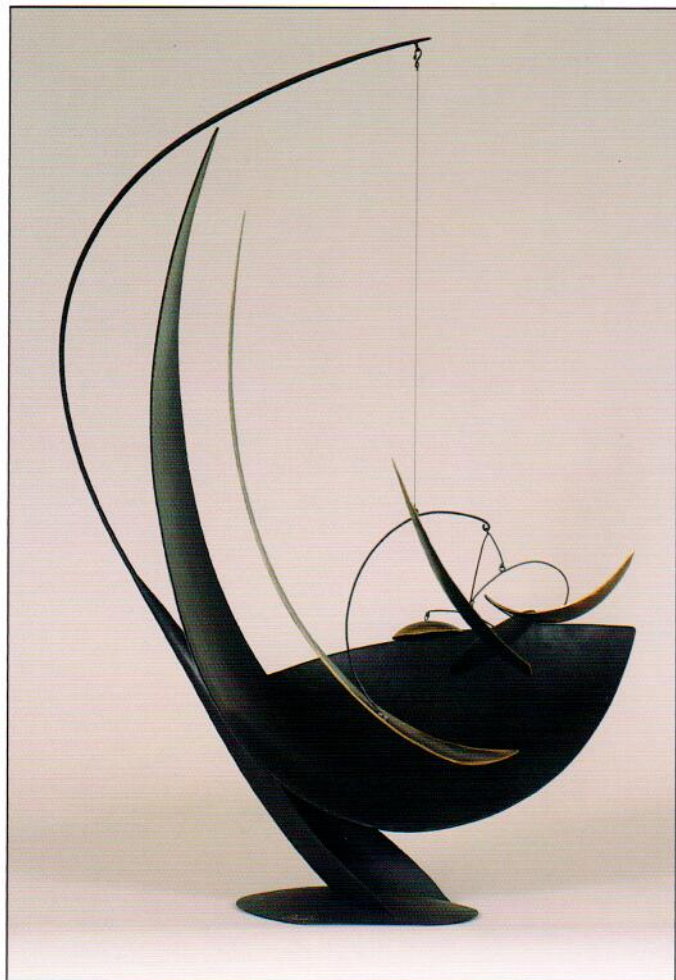
THE NIGHT CITADEL, 2001
Standing Mobile: steel, brass
and aluminum with acrylic colors
16 x 27 x 16"
MD219



POINTING THE WAY, 2002
Standing Mobile: sterling silver
7 1/2 x 13 x 10 1/2"
MD256



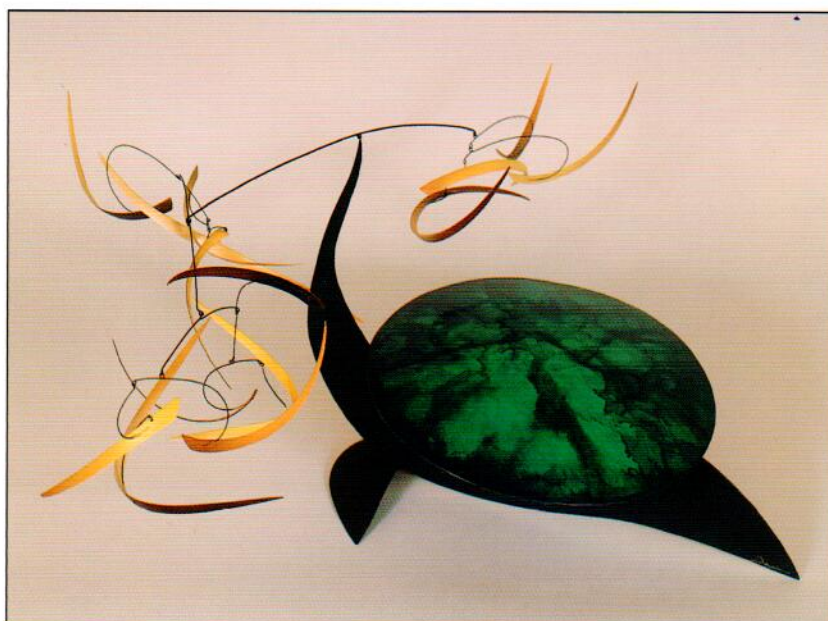
THAT TIME OF THE YEAR, 2001
Standing Mobile: steel and
aluminum with acrylic colors
25 1/2 x 19 1/2 x 28 1/4"
MD223



A SHARP WIT,
2001
Standing
Mobile: steel
and brass
with patinated
surface
22 x 16 x 16"
MD229



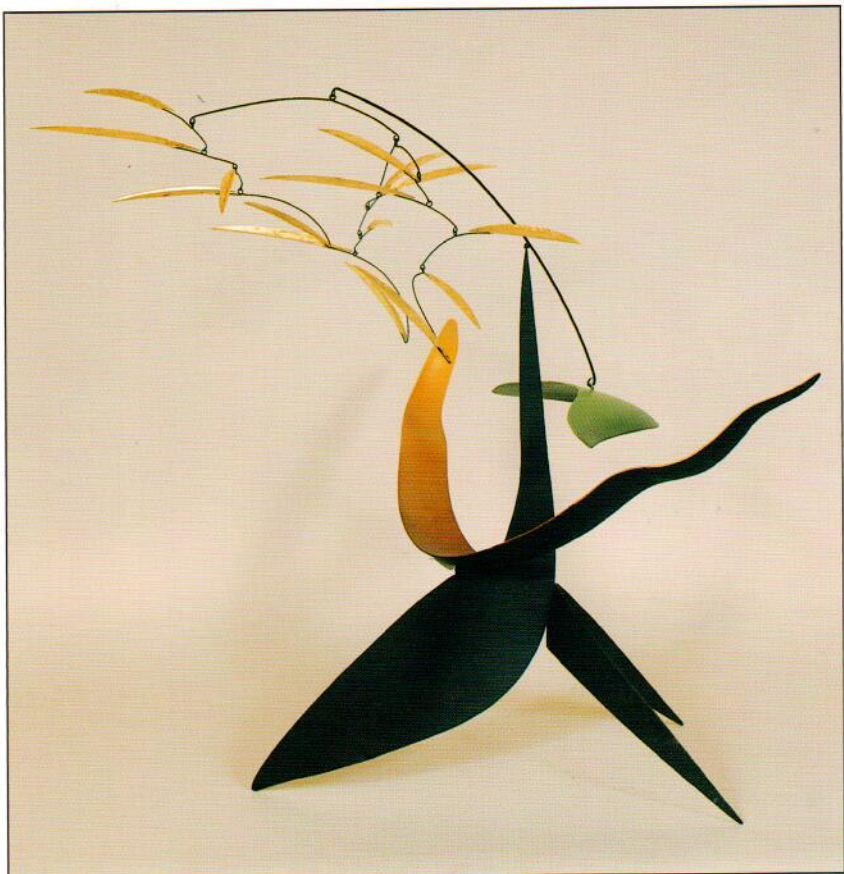
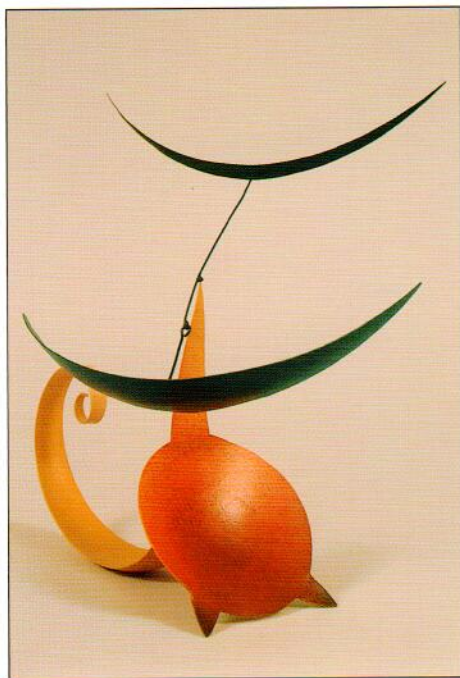
PURITY, 2001
Standing Mobile:
steel, brass and
aluminum with
acrylic colors
22 1/2 x 19 x 20"
MD218



UNDERWATER
MOVEMENT, 2001
Standing Mobile:
steel, brass and
aluminum with
acrylic and oil colors
15 x 32 x 12"
MD227

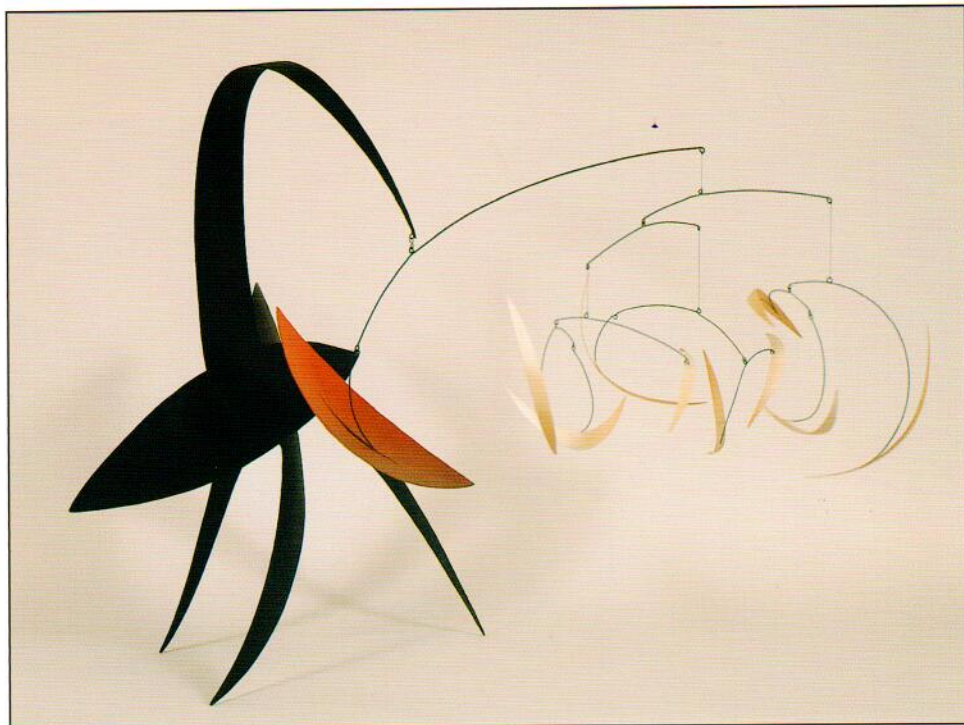
DAPPLED SUNLIGHT, 2002

Standing Mobile: aluminum and steel
with acrylic color and 24k gold leaf
24 x 25 1/4 x 23"
MD237



HARLEQUIN, 2003

Standing Mobile: brass with
acrylic colors
12 x 14 x 10"
MD263



TRANSITION, 2003

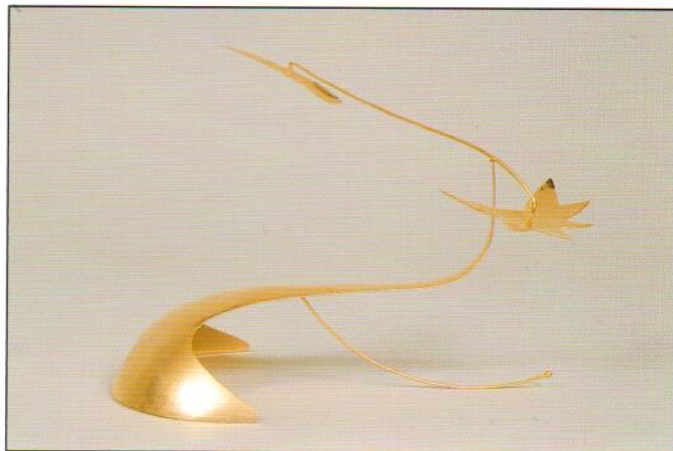
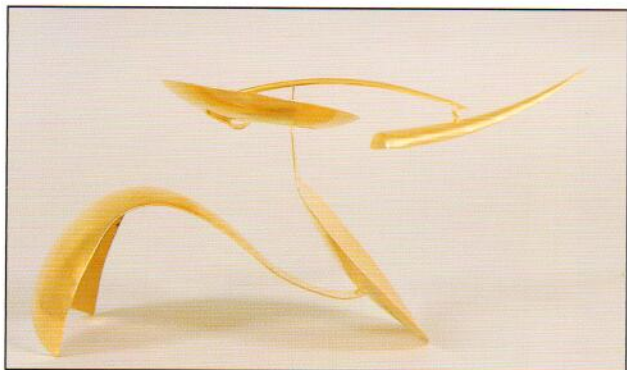
Standing Mobile: brass,
aluminum and steel with
acrylic colors
22 x 33 x 33"
MD270

POINTING THE WAY, 2002

Standing Mobile: brass with 18k gold plate

5 1/2 x 12 x 10 1/2"

MD259



TOWARDS TWILIGHT, 2002

Standing Mobile: brass with
18k gold and platinum

7 x 12 x 9 1/2"

MD239

GENEROSITY, 2002

Standing Mobile: brass,
aluminum steel with acrylic
and lacquer colors

28 x 22 x 24"

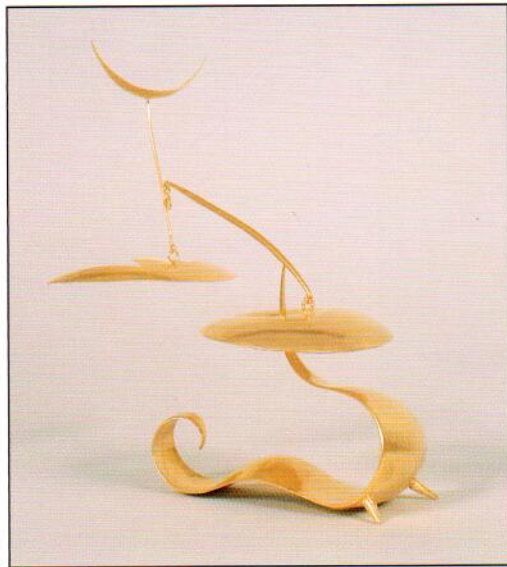
MD249



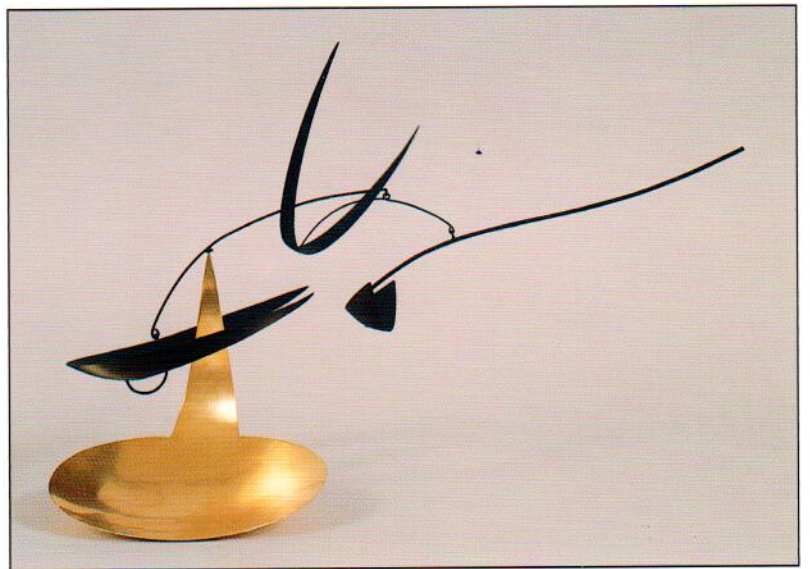
EXUBERANT RETURN, 2002
Standing Mobile: brass with 18k gold and platinum
10 1/2 x 13 x 17"
MD238



FEATHERWEIGHT, 2002
Standing Mobile: brass with 18k gold and platinum
10 x 12 x 15"
MD240



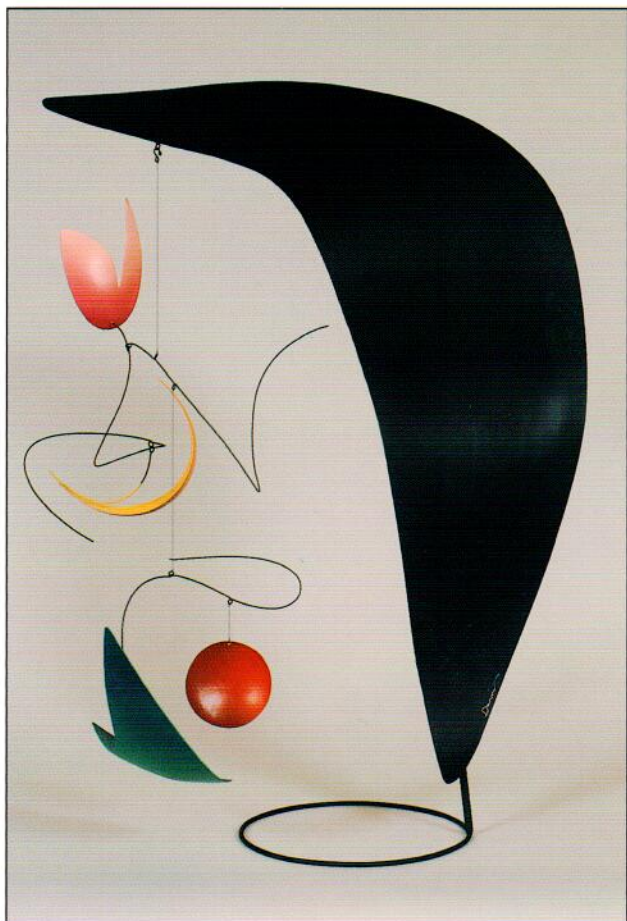
SMALL BUT MIGHTY, 2001
Standing Mobile: brass with 18k gold plate
7 1/2 x 10 x 4"
MD232



INVERSION, 2002
Standing Mobile: brass and aluminum with
18k gold plate and black acrylic
9 x 16 x 16"
MD255

Mark Davis

Artist's Biography



A SPECIAL GIFT, 2001
Standing Mobile: steel and aluminum with acrylic colors
23 1/4 x 10 1/2 x 10 1/2"
MD221

- 1954** Born May 1 in New Haven, CT
- 1972** Attended Goddard College, Plainfield, VT
- 1980** Solo exhibition at Bloomingdales, Chestnut Hill, MA of jewelry and masks
- 1982-85** Jewelry shows at Artwear, Bloomingdales, Saks Fifth Avenue, Macy's and Henri Bendel, New York, Articles in Vogue Magazine, New York Magazine and others
- 1988-1995** Commissioned to do window display mobiles for Tiffany's, New York, NY
- 1991-1992** Solo exhibitions, Judith N. Wolov Gallery, Design Center, Boston, MA
- 1993-1996** Created small and medium size mobiles for the L•S Collection on Madison Avenue and Soho
- 1995** Group exhibition, Pucker Gallery, Boston, MA
- 1997** Solo exhibition, *Nature in Motion*, Pucker Gallery, Boston, MA
- 1999** Solo exhibition, *Movement Within Space*, Pucker Gallery, Boston, MA
- 2001** Solo exhibition, *Color and Form in Motion*, Pucker Gallery, Boston, MA
- 2003** Solo exhibition, *Boldly Balanced*, Pucker Gallery, Boston, MA

PUBLIC COLLECTIONS

Lexus Corporation
Liberty Mutual Corporation
Rose Museum, Brandeis University

Mark Davis

Commissions

In addition to creating the unique and individual works of this catalogue, Mark Davis has also been involved with a number of private and public commissions. The artist and the client work in collaboration on the piece. It can be envisioned on almost any scale! Please contact the Gallery for more details.



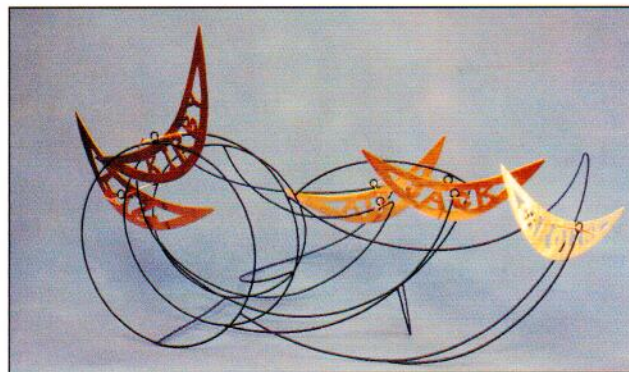
PRIVATE COLLECTION

Palm Beach, FL

Installed November 2000

7' high, 4' across, 2' deep

aluminum, bronze, colored epoxy finish



"NAMES"

Steel wires with 18k gold-plated brass

22 x 9 x 9"



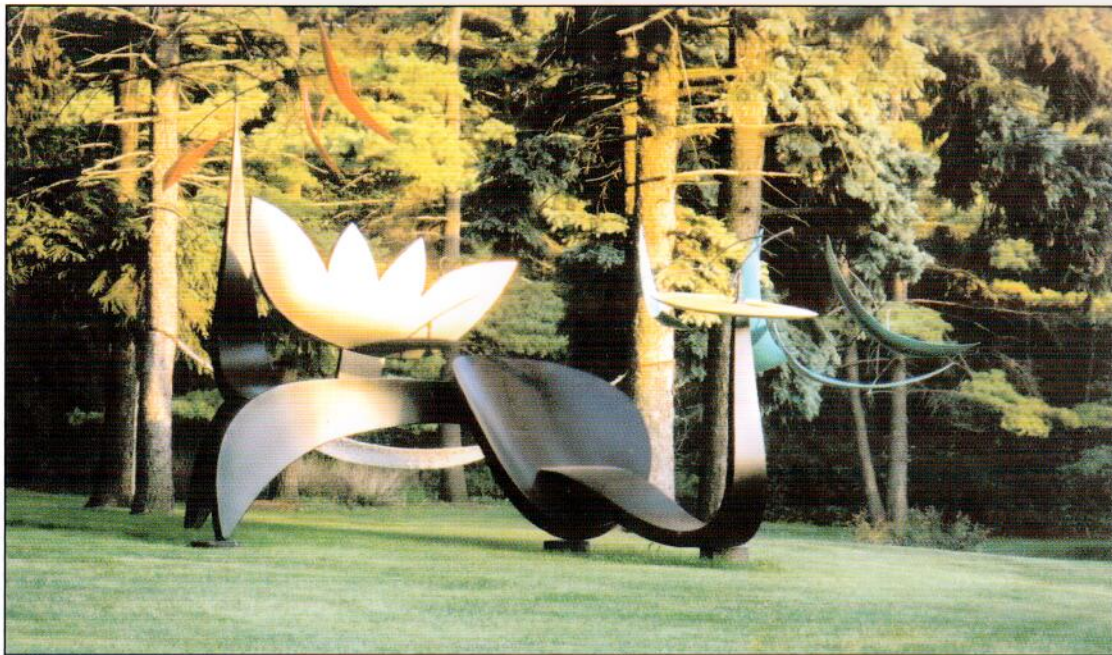
TEMPLE EMANUEL

Andover, MA

Installed April 2002

10' high, 9' across, 1' deep

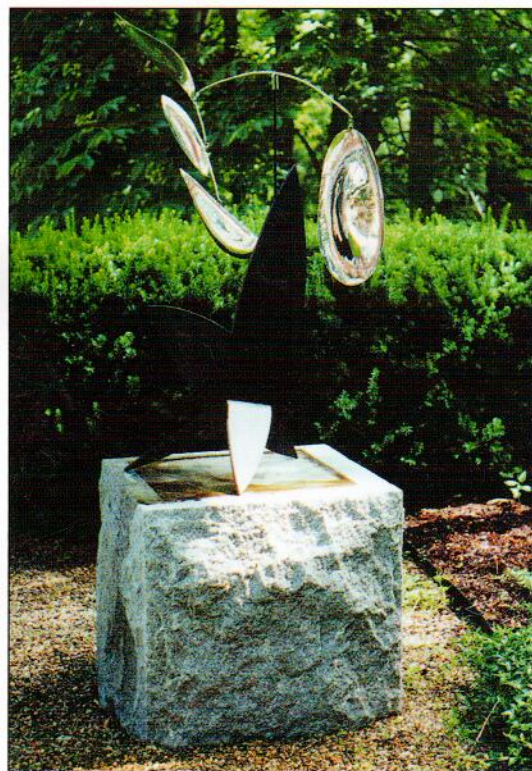
silicon bronze, stainless steel



PRIVATE
COLLECTION
Libertyville, IL
Installed
December 2002
12' high,
18' across,
9' deep
aluminum,
stainless steel,
colored epoxy
finish



PRIVATE COLLECTION
Cambridge, MA
Installed October 1999
6' high, 7' across, 3' deep
silicon bronze, stainless steel



PRIVATE COLLECTION
Brookline, MA
Installed June 1997
5 1/2' high, 2' across, 2' deep
silicon bronze, stainless steel

Boldly Balanced:

Mobiles by Mark Davis

DATES:

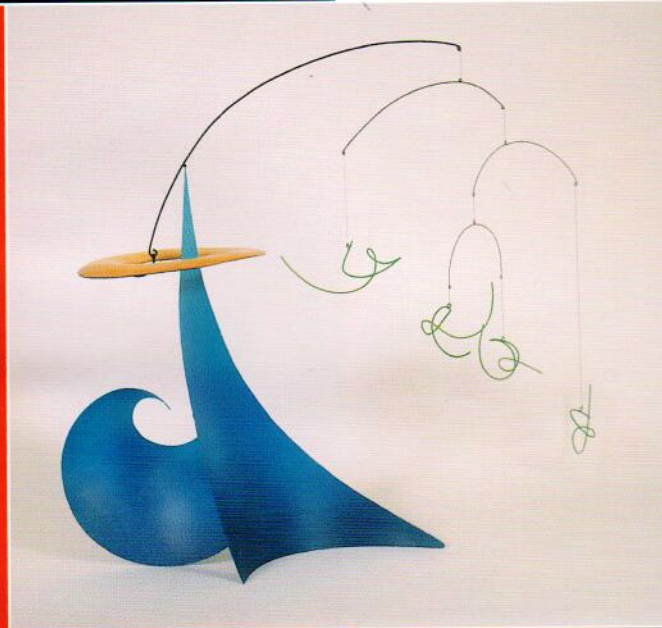
18 October to
10 November 2003

**OPENING
RECEPTION:**

18 October 2003
3 to 6 PM

The public is
invited to attend.

The artist will
be present.



**THE ELUSIVE MOMENT,
2002**

*Standing Mobile: brass and
steel with acrylic colors
23 x 26 x 31"*
MD260

CREDITS:

Design: Leslie Feagley
Editor: Jeanne Gressler
Photography: Max Coniglio

© 2003, Pucker Gallery
Printed in Hong Kong by
South China Printing
Company Limited

PUCKER GALLERY
171 Newbury Street
Boston, MA 02116
(617) 267-9473
FAX#: (617) 424-9759
email: contactus@puckergallery.com
www.puckergallery.com

GALLERY HOURS:
Monday through Saturday 10:00 am to 5:30 pm;
Sundays 1:00 to 5:00 pm.

Member of the Boston Art Dealers Association.
One hour free validated parking is available in the
lot on the corner of Newbury and Dartmouth Streets

Prsrt. Standard
U.S. Postage Paid
Boston, MA 02116
Permit #1906

ADDRESS SERVICES REQUESTED.