

YOSHINORI HAGIWARA

Symphony in Persimmon, Black, and Yellow





BIG PLATE
kaki glaze, kiln transformation
3.5 x 17 x 17"
YH787

YOSHINORI HAGIWARA

Symphony in Persimmon, Black, and Yellow

BY ANDREW L. MASKE

Suggestion can be powerful when used to evoke sensory memory. The mere mention of someone's name, such as "Grandmother," may bring forth not only strong emotions, but even cause sensations of taste, smell, sound, or feel. Art and literature often allude to this human reaction, particularly in contexts of nostalgia or past intimacy. However, some sensations are induced by exposure to certain stimuli even when encountering them for the first time.

This new group of ceramics by Yoshinori Hagiwara brings forth a chorus of positive reactions in this writer. First is surprise at the diversity of the offerings. Hagiwara's oeuvre has grown well beyond the black and persimmon-glazed vessels of his first Pucker exhibition in 2010. The offerings now include celadon glazes as well as black and persimmon, many new shapes, and incidental effects referred to as "kiln transformation." Next is delight that he continues to explore the various types of finely crafted kaki, resist, and pipe-decorated wares

On the cover:

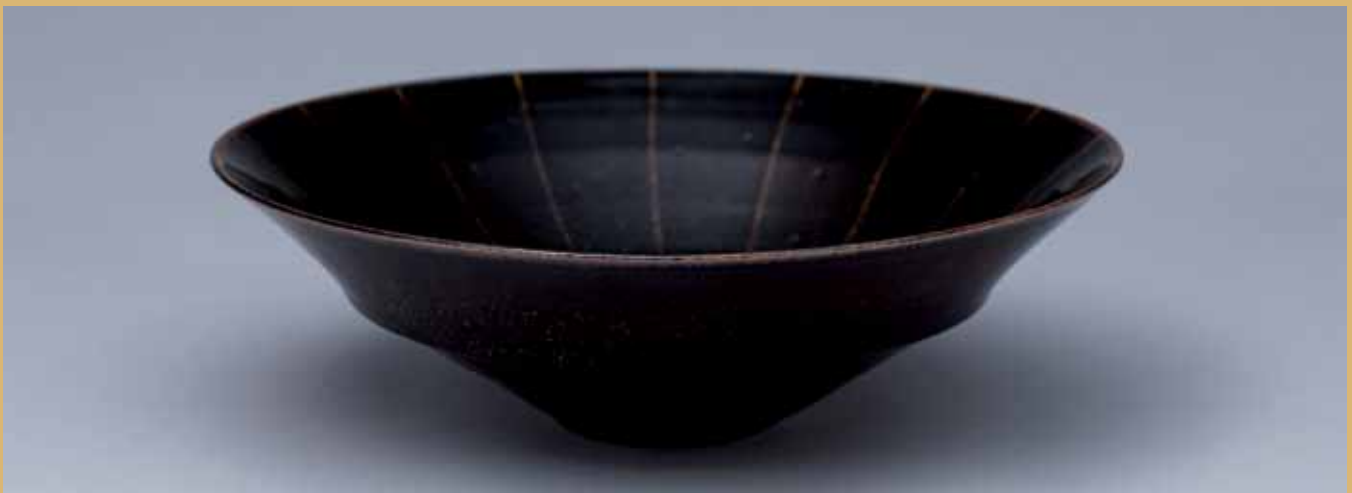
VASE (TOP)
kaki glaze, kiln transformation
10 x 8.25 x 8.25"
YH798

VASE (BOTTOM)
kaki glaze, kiln transformation
10 x 9.5 x 9.5"
YH797

that characterized his earlier work. Finally comes amazement at the unexpected turn his work has taken with his newest pieces, a genre he calls “kiln transformation” (*yōhen*).

A variety of ceramic artists today use the term *yōhen* to describe works subjected to extended high temperature firing in a woodburning kiln. None that I have seen thus far display the effects achieved by Hagiwara in this selection. Hagiwara’s kiln transformation wares have a base layer of the *kaki* (persimmon) glaze that characterized his early work (I am assuming the glaze composition is similar, if not exactly the same). The difference in these pieces is the striking yellow glaze that highlights each item. In many cases, this yellow glaze must be the result of kiln ash that has collected and melted onto the side of the vessel during firing, generally running down the surface for some distance. This freely generated effect is somewhat at odds with the careful, delicate approach that typifies Hagiwara’s work to this point. Even so, careful comparison reveals the same sense of focus and aesthetic vision that he exerted on his other styles. In other examples, the yellow glaze appears to have been applied to the vessel surface in careful lines, so the term “kiln transformation” does not refer only to incidental ash glaze, but specifically to the generation of the yellow color on a persimmon glaze background.

Hagiwara’s other new approaches both incorporate black glazes. One of these displays a lighter glaze applied over the top, creating golden effects on the black base. His other new genre consists of wares with a matte black glaze. These pieces have very subtle nuances that require careful inspection to appreciate. Although less striking than his other styles at first glance, Hagiwara’s matte black vessels echo the *wabi* (austere simplicity) aesthetic approach attributed to tea masters of sixteenth century Japan like Sen Rikyū (1522–1591). Their muted and somber appearance provides the perfect backdrop to offset vibrant flowers and other colorful contents. Yoshinori Hagiwara has succeeded in melding diverse components in producing the wares in this selection. Just as many varieties of instruments combine to create a symphonic experience for listeners, through Hagiwara’s mastery, a wide array of distinct elements come together to create a tantalizing visual feast for ceramics lovers.



BOWL
black glaze
3.5 x 11.5 x 11.5"
YH791



VASE
kaki glaze, kiln transformation
10.5 x 9 x 9"
YH799



SAKE CUP
matte black glaze
2.25 x 2.75 x 2.75"
YH848



LIDDED CONTAINER
kaki glaze, kiln transformation
4.5 x 4.75 x 4.75"
YH823



SAKE CUP
black glaze
1.75 x 2.75 x 2.75"
YH841



VASE
kaki glaze, kiln transformation
11.25 x 6.25 x 6.25"
YH800



SAKE CUP
black glaze
2.25 x 2 x 2"
YH840



LIDDED CONTAINER
black glaze
4.25 x 4 x 4"
YH828



SAKE CUP
kaki glaze, kiln transformation
2.25 x 2.25 x 2.25"
YH835



BOWL
kaki glaze, kiln transformation
3.5 x 11 x 11"
YH792



VASE
kaki glaze, kiln transformation
8 x 6.5 x 6.5"
YH804



VASE
black glaze
8.75 x 4.75 x 4.75"
YH807



VASE
kaki glaze, kiln transformation
9.25 x 6.25 x 6.25"
YH802



SET OF SIX SMALL SQUARE PLATES
black glaze
.5 x 4 x 4.25" each
YH867



BIG PLATE
black glaze
3 x 15.5 x 15.25"
YH788



VASE
kaki glaze
kiln transformation
9 x 8.5 x 8.5"
YH801



SINGLE FLOWER VASE
kaki glaze, kiln transformation
4.25 x 4.5 x 4.5"
YH817



SINGLE FLOWER VASE
kaki glaze, kiln transformation
5 x 4.5 x 4.5"
YH815



SINGLE FLOWER VASE
matte black glaze
6 x 3 x 3"
YH822



SINGLE FLOWER VASE
kaki glaze, kiln transformation
5.75 x 3 x 3"
YH821



VASE
kaki glaze, kiln transformation
10 x 4.5 x 4.5"
YH803



SMALL BOWLS
celadon glaze
2.75 x 5.25 x 5.25" each
YH752-YH757



LARGE PLATES
celadon glaze
1.25 x 12.5 x 12.5" each
YH741/YH742

MEDIUM PLATES
celadon glaze
1 x 9 x 9" each
YH744/YH745

SMALL PLATES
celadon glaze
.5 x 6.5 x 6.5" each
YH746/YH748

SMALL BOWLS
celadon glaze
2.75 x 5.25 x 5.25" each
YH750/YH751



LARGE BOWL
celadon glaze
2.25 x 9.75 x 9.75"
YH749

SMALL PLATE
celadon glaze
.5 x 6.5 x 6.5"
YH747

LARGE PLATE
celadon glaze
1.25 x 12.5 x 12.5"
YH743



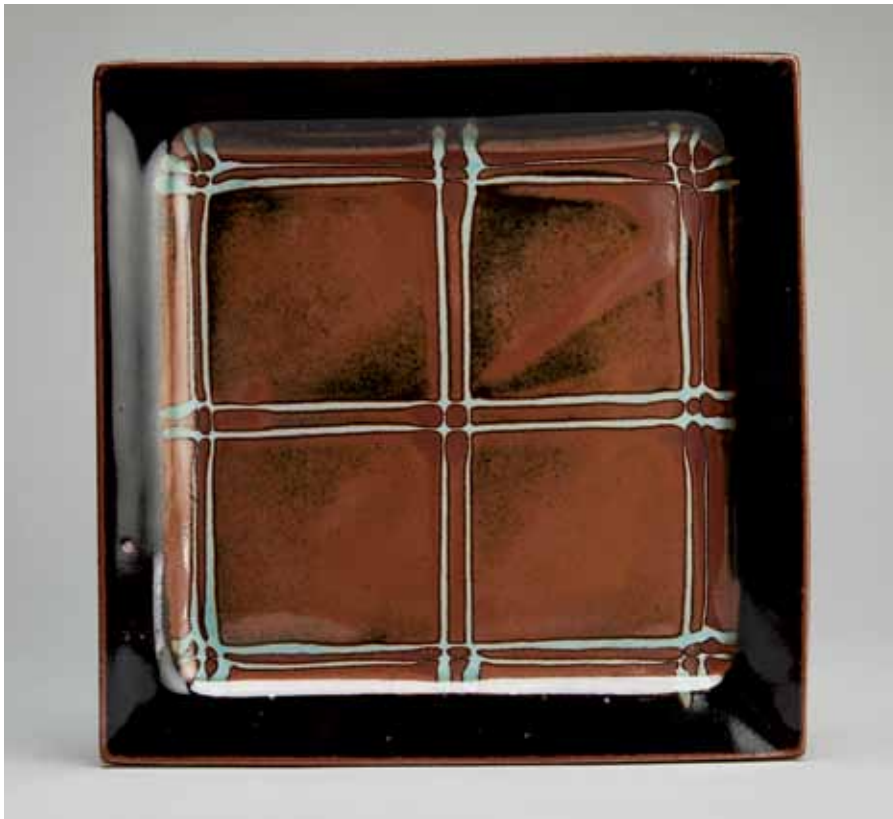
VASE
black glaze
8.25 x 6.5 x 6.5"
YH808



VASE
matte black glaze
9.25 x 5.25 x 5.25"
YH809



BOWL
kaki glaze, kiln transformation
2.5 x 9 x 8.75"
YH795



SQUARE PLATE
black and kaki glazes
.75 x 9.25 x 9.25"
YH734



TEA CUP
black glaze
3.25 x 3.25 x 3.25"
YH861



TEA CUP
kaki glaze, kiln transformation
3.75 x 3 x 3"
YH850



SQUARE PLATE
black and kaki glazes
1.25 x 11.75 x 11.5"
YH722



TEA CUP
kaki glaze, kiln transformation
3.25 x 3.25 x 3.25"
YH855



KATAKUCHI
matte black glaze
3.25 x 6.25 x 4.75"
YH832



KATAKUCHI
kaki glaze, kiln transformation
3.5 x 5.5 x 3"
YH833



LARGE BOWL
kaki glaze
2 x 9.5 x 9.5"
YH759

SMALL BOWL
kaki glaze
3 x 5.25 x 5.25"
YH758

OVAL PLATE
kaki glaze
1.25 x 9.75 x 9"
YH783

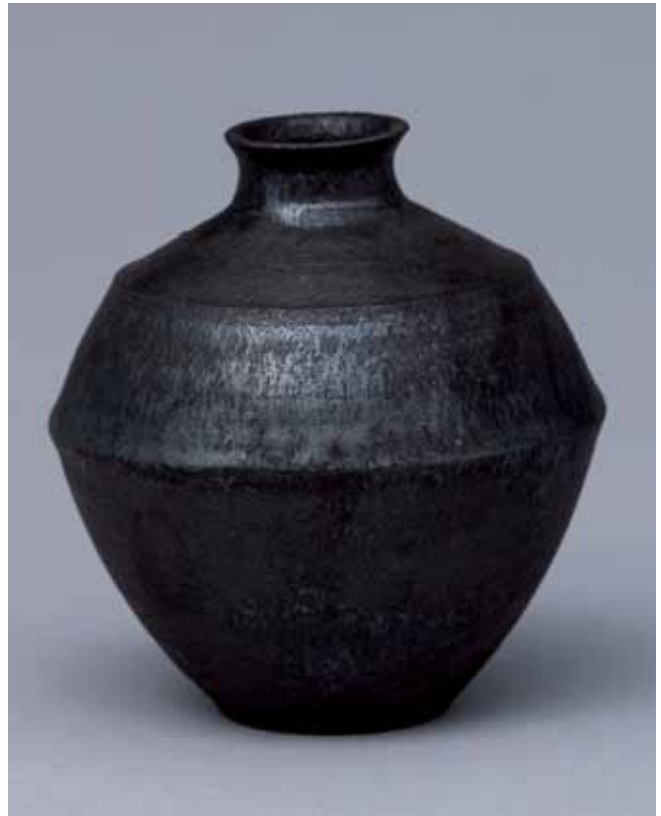
SMALL OVAL PLATE
kaki glaze
1 x 5.75 x 6.25"
YH772



BOWL
black glaze
3 x 10 x 10.25"
YH793



SINGLE FLOWER VASE
kaki glaze, kiln transformation
5.25 x 4.5 x 4.5"
YH814



SINGLE FLOWER VASE
matte black glaze
5.25 x 4.75 x 4.75"
YH819



OVAL PLATES
kaki glaze
1.25 x 9.75 x 9" each
YH774-YH782, YH784



SET OF SIX SMALL PLATES
black glaze
.75 x 4 x 4.25" each
YH868



BOWL
black glaze
2.75 x 9.5 x 9.5"
YH794



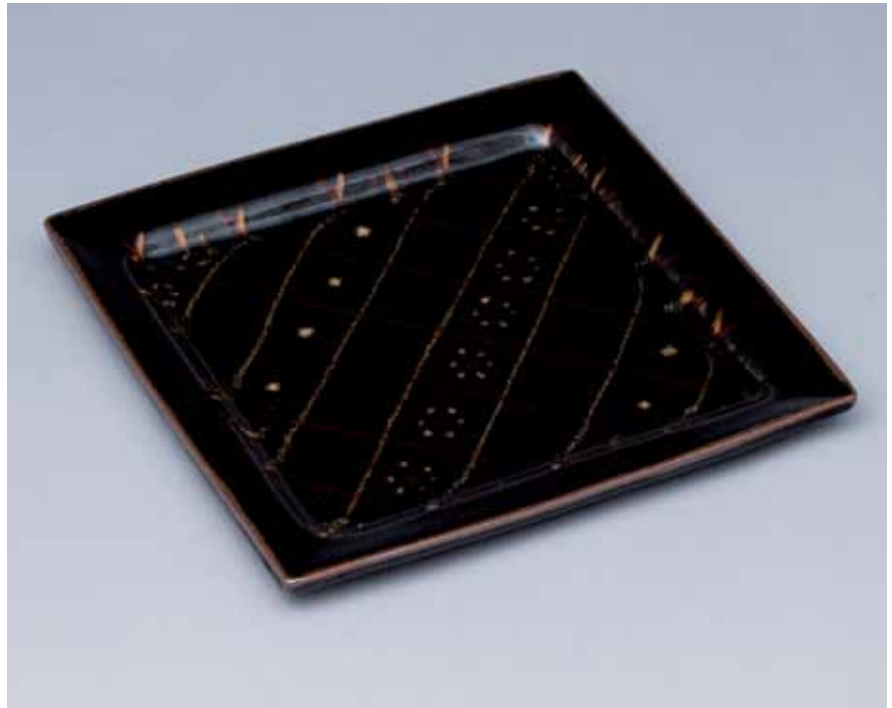
VASE
kaki glaze, kiln transformation
7 x 5.25 x 5.25"
YH811



VASE
matte black glaze
8.75 x 6.75 x 6.75"
YH810



TEA CUP
black glaze
3.5 x 3.25 x 3.25"
YH857



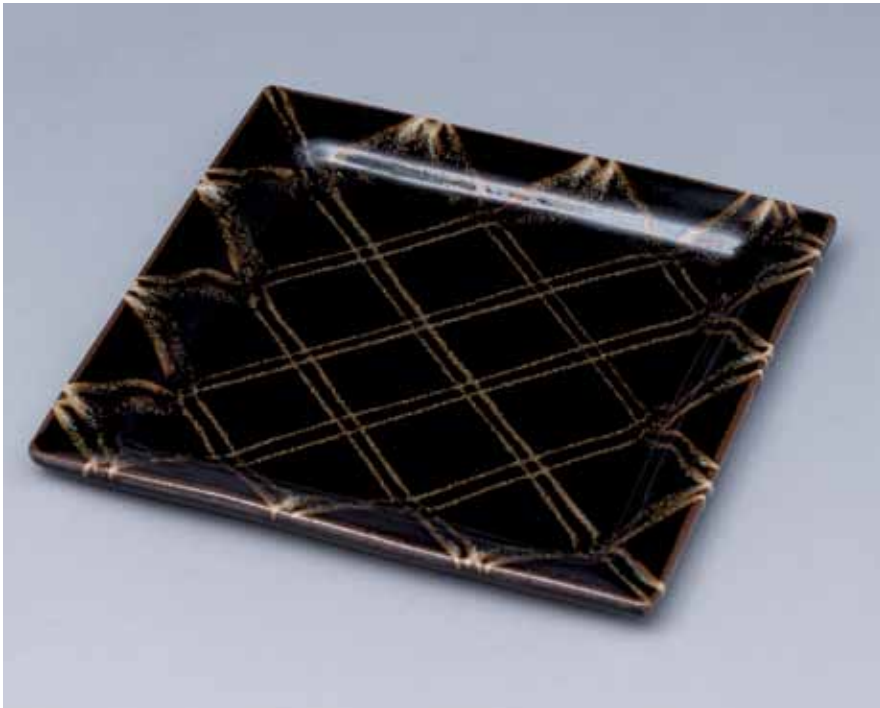
SQUARE PLATE
black glaze
1 x 9.25 x 9.25"
YH864



TEA CUP
black glaze
3 x 3 x 3"
YH858



SINGLE FLOWER VASE
kaki glaze, kiln transformation
6 x 3 x 3"
YH820



SQUARE PLATE
black glaze
1 x 9 x 9.25"
YH865



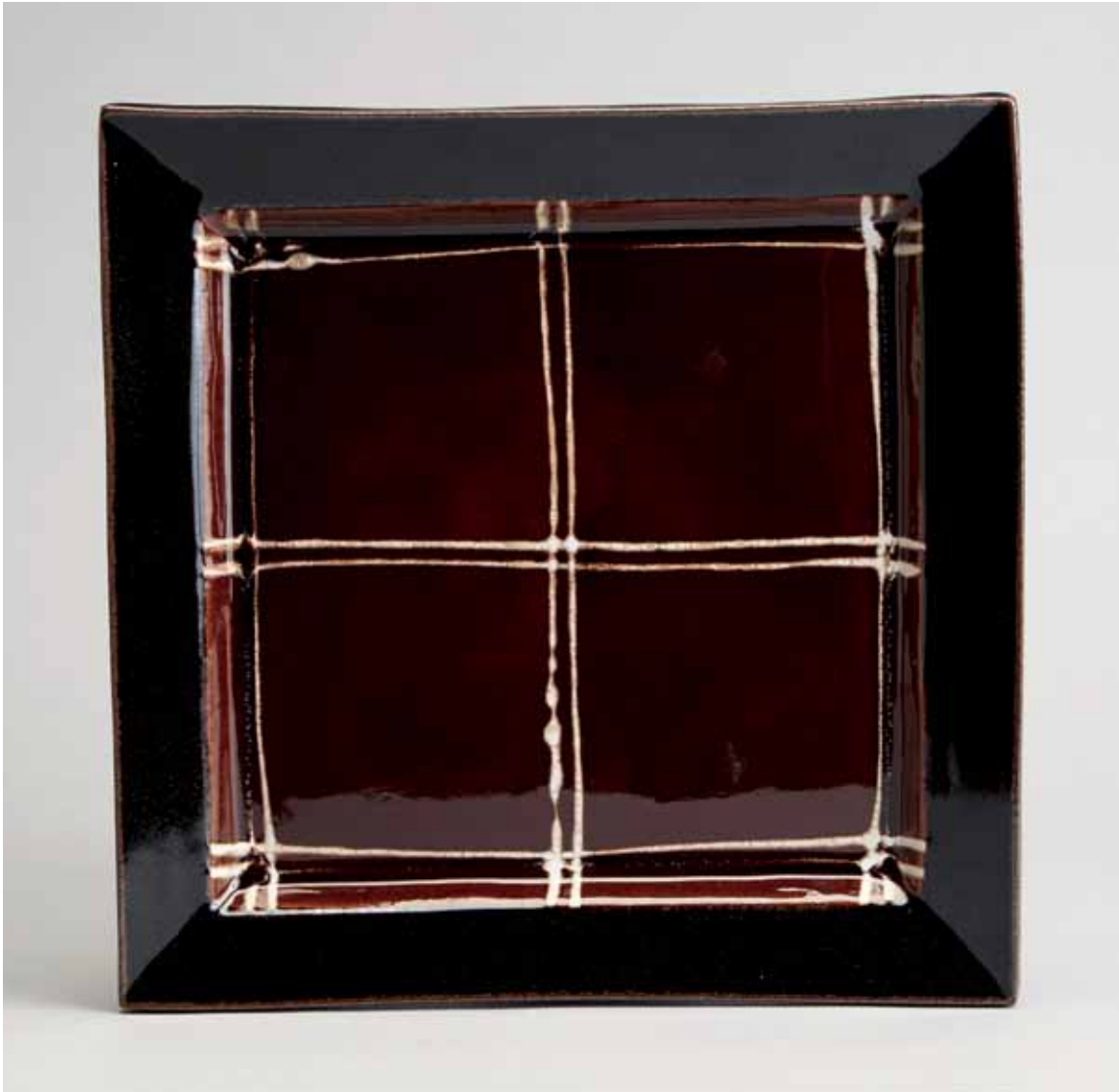
TEA CUP
black glaze
3 x 3 x 3"
YH856



VASE
kaki glaze, kiln transformation
8.25 x 4.5 x 4.5"
YH805



MUG
black glaze
3.5 x 4.5 x 4.5"
YH879



SQUARE PLATE
black and kaki glazes
1.25 x 11.25 x 11.5"
YH723



MUG
black glaze
3.75 x 5 x 4"
YH873



MUG
black glaze
3.5 x 5 x 4"
YH874



MUG
black glaze
3.75 x 4.25 x 3.75"
YH875



MUG
matte black glaze
3.5 x 4.5 x 3.75"
YH870



MUG
matte black glaze
3.75 x 4.5 x 3.75"
YH871



MUG
matte black glaze
3.5 x 4.75 x 4.75"
YH872



SQUARE PLATE
black and kaki glazes
1 x 11.5 x 11.75"
YH724



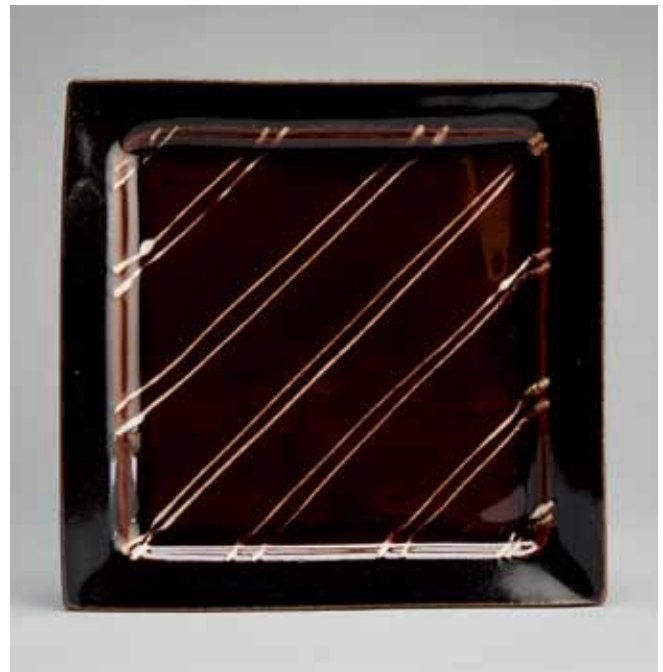
SQUARE PLATE
black and kaki glazes
.5 x 9 x 9.25"
YH732



SQUARE PLATE
black and kaki glazes
.75 x 9.25 x 9"
YH735



SQUARE PLATE
black glaze
.75 x 9 x 9.25"
YH737



SQUARE PLATE
black and kaki glazes
.75 x 9 x 9.25"
YH731



SMALL PLATES
 kaki glaze
 .5 x 6.25 x 6.25" each
 YH760-YTH762



SAKE CUP
 black glaze
 1.5 x 3 x 3"
 YH844



SAKE CUP
 kaki glaze, kiln transformation
 2.25 x 2.25 x 2.25"
 YH839



SAKE CUP
 black glaze
 2 x 2.75 x 2.75"
 YH842



SAKE CUP
 kaki glaze, kiln transformation
 1.75 x 2.5 x 2.5"
 YH836



SAKE CUP
 kaki glaze, kiln transformation
 1.75 x 3 x 3"
 YH837



SAKE CUP
 kaki glaze, kiln transformation
 1.75 x 2.5 x 2.5"
 YH838



SQUARE PLATE
 nuka and namijiro glazes
 1 x 11.75 x 11.5"
 YH728



SQUARE PLATE
black glaze
1 x 11.75 x 11.75"
YH725



MUG
black glaze
3.75 x 5 x 3.75"
YH876



MUG
black glaze
3.75 x 4.75 x 3.75"
YH877



MUG
black glaze
3.25 x 4.75 x 3.5"
YH878



LIDDED CONTAINER
matte black glaze
4.5 x 5 x 5"
YH825



LIDDED CONTAINER
matte black glaze
3.5 x 3.5 x 3.5"
YH830



LIDDED CONTAINER
matte black glaze
3.5 x 4 x 4"
YH831



BOWL
black glaze
3 x 8.25 x 8.25"
YH796



BOWL
kaki glaze
kiln transformation
4.5 x 13 x 13"
YH790



LIDDED CONTAINER
kaki glaze, kiln transformation
3.75 x 4 x 4"
YH827



LIDDED CONTAINER
black glaze
3.5 x 4 x 4"
YH829



LIDDED CONTAINER
kaki glaze, kiln transformation
4 x 3.5 x 3.5"
YH826



TEA CUP
kaki glaze, kiln transformation
3.5 x 3.25 x 3.25"
YH851



TEA CUP
kaki glaze, kiln transformation
3.25 x 3.5 x 3.5"
YH852



TEA CUP
kaki glaze, kiln transformation
3.5 x 3.25 x 3.25"
YH853



BIG PLATE
kaki glaze, kiln transformation
3 x 14.75 x 14.75"
YH789



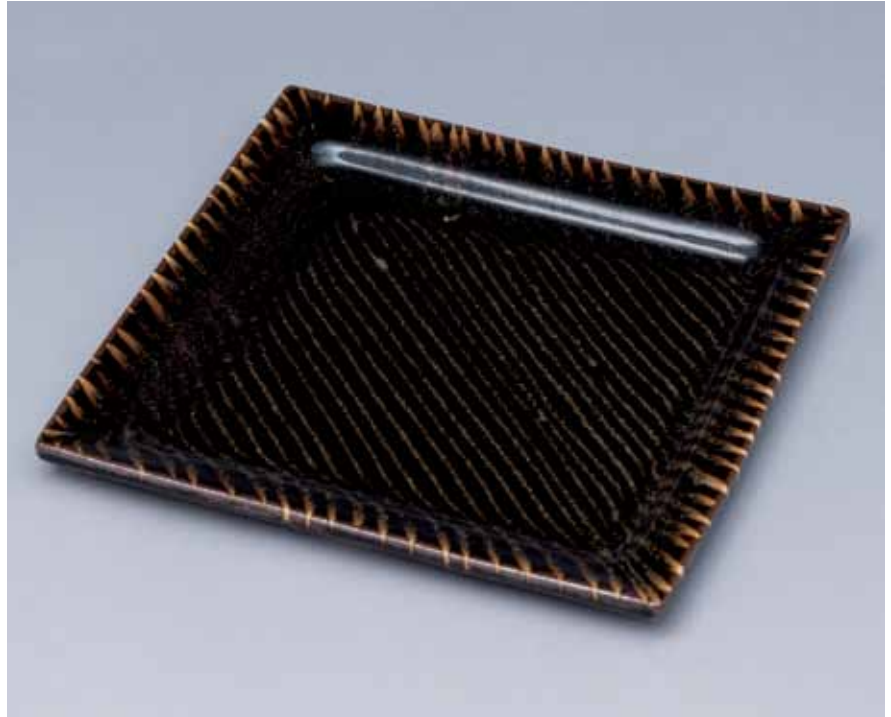
SAKE CUP
black glaze
2 x 2.75 x 2.75"
YH843



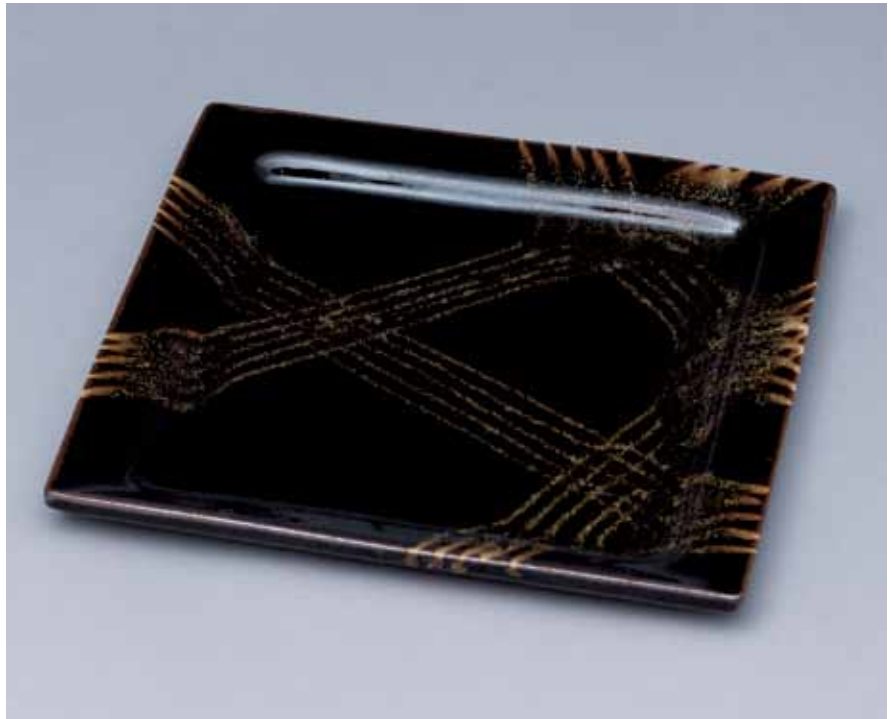
SAKE CUP
matte black glaze
2.5 x 2.75 x 2.75"
YH847



SAKE CUP
matte black glaze
1.5 x 3.25 x 3.25"
YH849



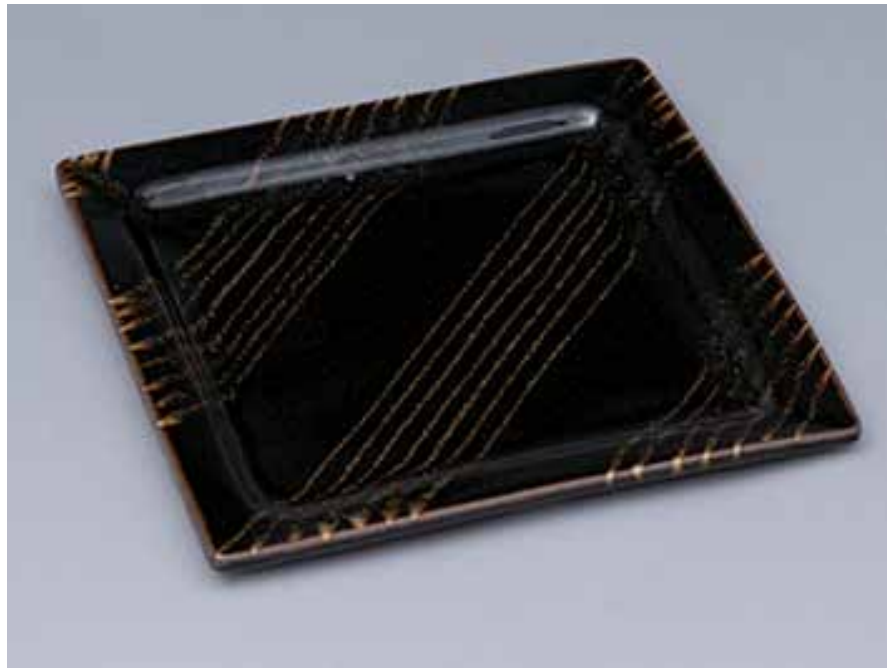
SQUARE PLATE
black glaze
1 x 9.25 x 9.25"
YH862



SQUARE PLATE
black glaze
1 x 9.25 x 9"
YH866



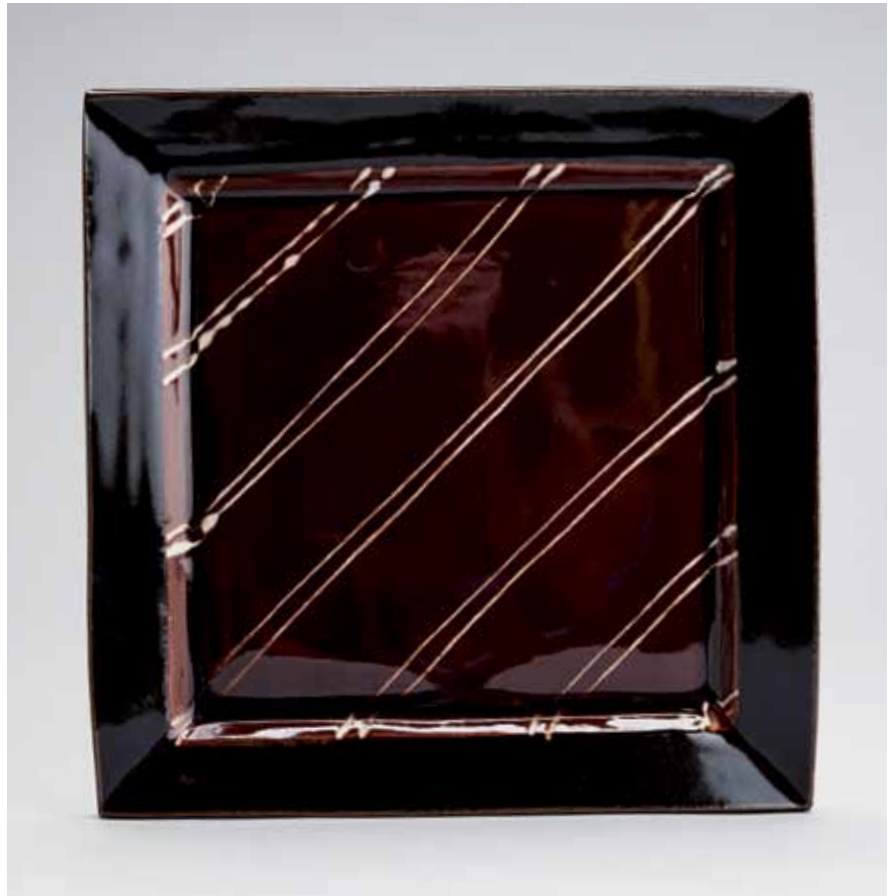
SAKE CUP
matte black glaze
2.25 x 2.25 x 2.25"
YH845



SQUARE PLATE
black glaze
1 x 9.25 x 9.25"
YH863



SAKE CUP
matte black glaze
1.75 x 2.75 x 2.75"
YH846



SQUARE PLATE
black and kaki glazes
1 x 11.75 x 11.5"
YH729



LIDDED CONTAINER
black glaze
4.5 x 4.5 x 4.5"
YH824



BIG PLATE
black glaze
3.75 x 17 x 17.25"
YH786



TEA CUP
black glaze
3.5 x 3.5 x 3.5"
YH859



TEA CUP
kaki glaze, kiln transformation
3.25 x 3.5 x 3.5"
YH854



TEA CUP
black glaze
3.25 x 3 x 3"
YH860



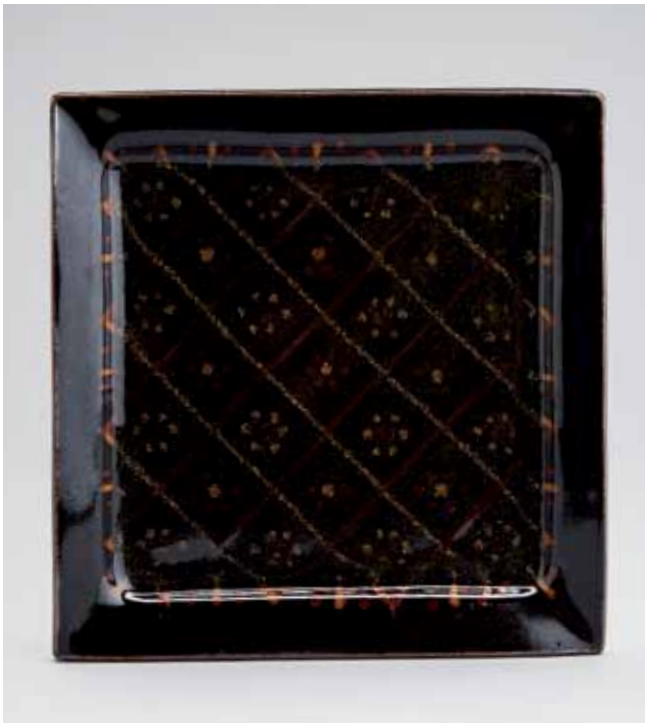
SET OF SIX PLATES
black glaze
1 x 9 x 9" each
YH869



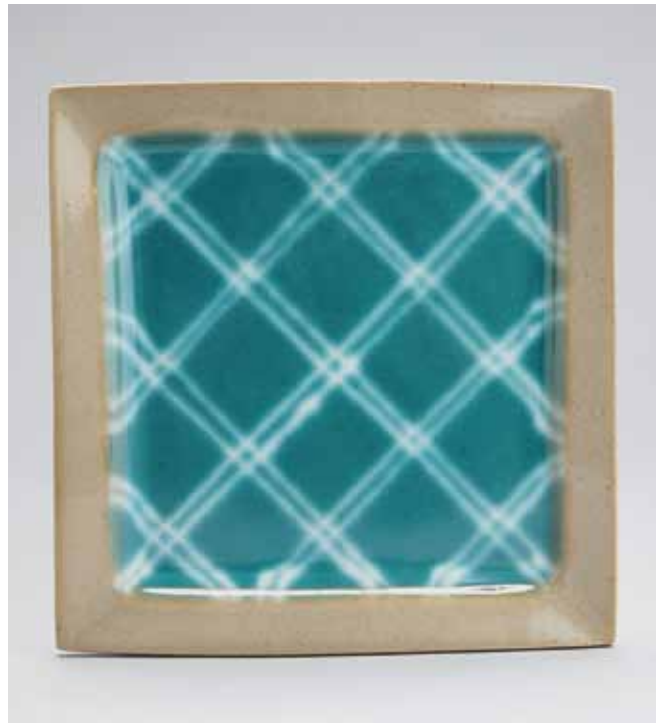
KATAKUCHI
black glaze
3 x 6 x 4.75"
YH834



VASE
black glaze
8.75 x 5.5 x 5.5"
YH806



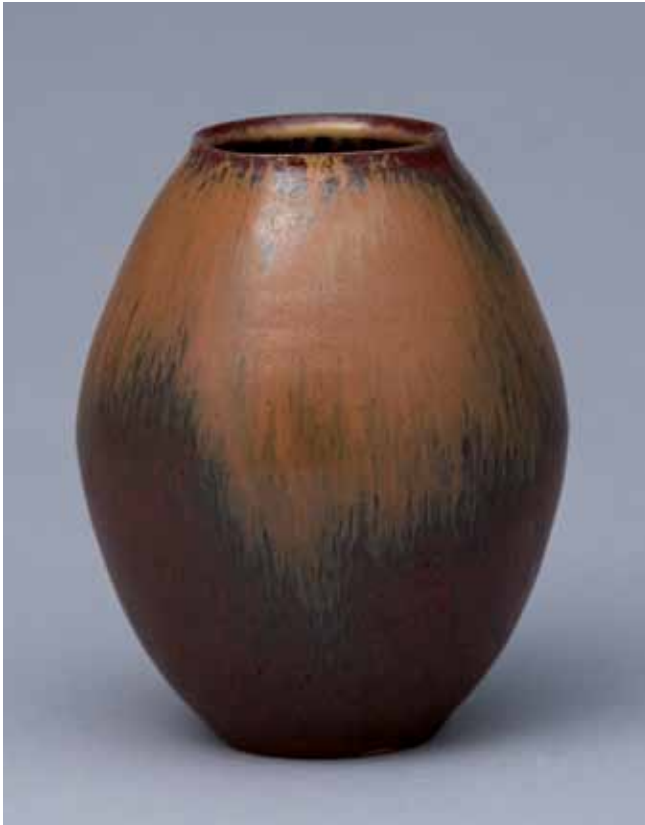
SQUARE PLATE
black glaze
.75 x 9 x 9"
YH736



SQUARE PLATE
nuka and namijiro glazes
.75 x 9 x 9.25"
YH739



SMALL OVAL PLATES
kaki glaze
1 x 5.75 x 6.25" each
YH763-YH771, YH773



SINGLE FLOWER VASE
kaki glaze, kiln transformation
5.5 x 4.25 x 4.25"
YH812



SINGLE FLOWER VASE
kaki glaze, kiln transformation
5.75 x 4.75 x 4.75"
YH813



SINGLE FLOWER VASE
matte black glaze
6 x 4.5 x 4.5"
YH818



SINGLE FLOWER VASE
kaki glaze, kiln transformation
5.5 x 4.5 x 4.5"
YH816



Born in 1974, as the fifth generation of the Hagiwara family ceramic workshop, Yoshinori Hagiwara currently resides in Mashiko, Japan. He studied and researched at the Tochigi Prefectural Ceramics Instructional Institute, and his work has since been selected for inclusion, and has won numerous prizes, at the National Art Exhibition for multiple years. Hagiwara's recent ceramics have broadened beyond his well-known persimmon glaze, and he has incorporated yellow kaki, blue nuka, and namiji-ro glaze into his artistic vocabulary. He has created his own expression through using these glazes, and exhibits great control in creating elegant forms. In 2014, Japan's Ministry of Economy, Trade, and Industry designated Hagiwara as a "Traditional Craftsman." His ceramics are included in significant public collections including the Art Institute of Chicago, the Schein Joseph Museum of Ceramic Art at Alfred University in Alfred, New York, and the Tikotin Museum of Art in Haifa, Israel. Since 2019, Hagiwara has been a full member of Kokuga-kai, and a judge with the organization since 2020. His work has been exhibited by Pucker Gallery since 2010.

CREDITS:

Design: Leslie Anne Feagley | *Editors:* Jeanne Koles and Jacqueline Belfield Gertner | *Photography:* Kan Matsuzaki and John Davenport

© 2021, Pucker Gallery | Printed in the United States by Modern Postcard

PUCKER

ESTABLISHED 1967 BOSTON

GALLERY

PUCKER GALLERY

240 Newbury Street, 3rd floor

Boston, MA 02116

Phone: 617.267.9473

Email: contactus@puckergallery.com

GALLERY HOURS:

Monday through Saturday

10:00 AM to 5:30 PM

Sunday 10:30 AM to 5:00 PM

We are open to all and taking the necessary precautions for visitor and staff safety. We welcome appointments to maximize visitor experience.

Pucker Gallery is a member of the Boston Art Dealers Association and the New England Appraisers Association.

YOSHINORI HAGIWARA

Symphony in Persimmon, Black, and Yellow

DATES:

24 April through 30 May 2021

ONLINE EVENTS:

Please visit www.puckergallery.com for a list of virtual gatherings and events accompanying *Symphony in Persimmon, Black, and Yellow*.



SQUARE PLATE
black glaze
1.25 x 11.5 x 11.75"
YH721



SQUARE PLATE
nuka and namijiyo glazes
.75 x 9.25 x 9.25"
YH738



SQUARE PLATE
black and kaki glazes
1 x 11.75 x 11.5"
YH730



SQUARE PLATE
nuka and namijiyo glazes
1 x 11.75 x 12"
YH727



SQUARE PLATE
kaki glaze
.75 x 9 x 9"
YH733



SQUARE PLATE
nuka and namijiyo glazes
1 x 9.25 x 9.25"
YH740

Please visit www.puckergallery.com to view the full catalogue for this exhibition, which includes additional work by the artist.