



THREE GENERATIONS OF  
Hamada Ceramics

PUCKER GALLERY  
BOSTON



Shoji Hamada  
*Squared bottle*, kaki and green glazes with wax resist brushwork  
 9 x 6 x 3.5"  
 H70

**SHOJI HAMADA** was born in 1894 in Tokyo, Japan. He graduated from Tokyo Technical College in 1916 and enrolled at Kyoto Ceramics Research. During the years from 1919 to 1923, Hamada travelled extensively to learn about diverse ceramic and folk craft traditions and built a climbing kiln in England at St Ives with Bernard Leach (1887–1979). In 1952, Hamada travelled with Soetsu Yanagi (1889–1961) and Bernard Leach throughout the United States to give ceramic demonstrations and workshops. After receiving the Tochigi Prefecture Culture Award and Minister of Education Award for Art, Hamada was designated a Living National Treasure in 1955. Thereafter, he was appointed Director of the Japan Folk Art Museum and awarded the Okinawa Times Award and Order of Culture from the Emperor. In 1961, *Shoji Hamada: Collected Works* was published by Asahi Shimbun. In 1973, Hamada received an honorary Doctor of Art degree from the Royal College of Art in London, England. Shoji Hamada died in 1978, four years after the completion of the Mashiko Sankokan Museum, which was built in his home.

COVER:

Left:  
 Shinsaku Hamada  
*Faceted vase*, salt glaze with hakeme decoration  
 11.75 x 8.5 x 8.5"  
 HS87

Center:  
 Tomoo Hamada  
*Bowl*, black and white glazes with akae decoration  
 8.5 x 16.5 x 16.5"  
 HT339

Right:  
 Shoji Hamada  
*Square vase*, kaki and green glazes  
 9 x 7 x 6.25"  
 H64

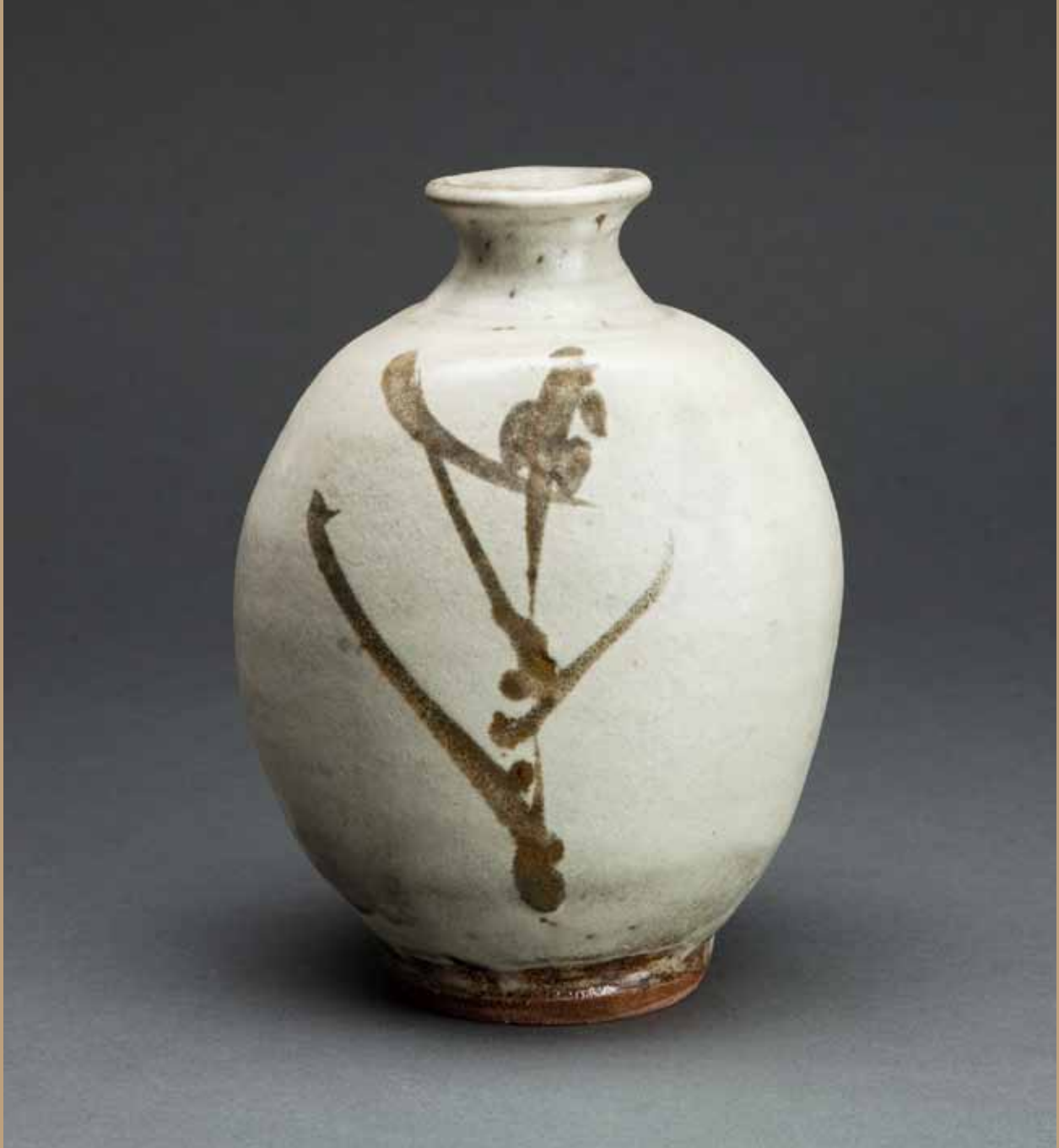
ALL WORKS ARE STONEWARE.



Shoji Hamada  
*Square dish*, kaki and green glazes  
3.25 x 12.5 x 12.5"  
H33



Shoji Hamada  
*Bowl*, kaki and green glazes  
2.75 x 9.5 x 9.5"  
H62



Shoji Hamada  
*Bottle*, nuka glaze with tetsue brushwork  
9 x 6.25 x 6.25"  
H72



Shoji Hamada  
Vase, hakeme and tetsue brushwork  
8.25 x 3.75 x 3.75"  
H53





Shoji Hamada  
*Obachi*, green and black glazes  
4.5 x 18 x 18"  
H42



Shoji Hamada  
*Obachi*, black and kaki glazes  
5.5 x 22.5 x 22.5"  
H40 (PG)





Shoji Hamada  
*Obachi*, amber and green glazes  
6.25 x 23 x 23"  
H61



Shoji Hamada  
*Bowl*, ash glaze  
2.75 x 9.5 x 9.25"  
H2



Shoji Hamada  
*Pourer*, nuka glaze with tetsue brushwork  
4.25 x 7.25 x 8.75"  
H5



Shoji Hamada  
*Lidded bowl, tenmoku and nuka glazes*  
6 x 7.75 x 7.75"  
H11



Shoji Hamada  
*Plate*, tenmoku and nuka glazes  
2.25 x 11.75 x 11.75"  
H16





Shoji Hamada  
*Plate, tenmoku and kaki glazes*  
2 x 10.75 x 10.75"  
H17





Shoji Hamada  
*Hexagonal vase, black and kaki glazes*  
8 x 3.75 x 3.75"  
H26



Shoji Hamada  
*Plate, kaki glaze with wax resist decoration*  
2 x 9.75 x 9.75"  
H27



Shoji Hamada  
*Square dish*, black and nuka glazes  
 3 x 13 x 13"  
 H29



Shoji Hamada  
*Squared bottle*, amber glaze with tetsue brushwork  
9 x 6.25 x 3"  
H31



Shoji Hamada  
*Textured bottle, black glaze*  
10.5 x 5.5 x 5.5"  
H36



Shoji Hamada  
*Rectangular bottle, black and nuka glazes*  
9.25 x 4 x 4"  
H39 (FM)





Shoji Hamada  
*Squared bottle*, kaki glaze with wax resist brushwork  
8.25 x 5.75 x 3"  
H41



Shoji Hamada  
*Faceted vase*, salt glaze with wax resist brushwork  
10.25 x 5.25 x 5.25"  
H43



Shoji Hamada  
*Bottle*, natural ash glaze  
9.25 x 7 x 5.75"  
H44



Shoji Hamada  
*Mizusashi*, kaki and green glazes with wax resist brushwork  
5.75 x 7 x 6"  
H45



Shoji Hamada  
*Plate*, black and kaki glazes  
2.25 x 11 x 11"  
H46



Shoji Hamada  
*Plate*, tetsue brushwork  
4.25 x 8.25 x 8.25"  
H48





Shoji Hamada  
Oval dish, kaki glaze with wax resist brushwork  
3 x 11 x 9.75"  
H49



Shoji Hamada  
*Rectangular dish, kaki glaze with wax resist brushwork*  
2.5 x 9 x 7"  
H50



Shoji Hamada  
Vase, tetsue brushwork  
6.75 x 4.75 x 4.75"  
H56



Shoji Hamada  
*Square dish*, kaki glaze with wax resist brushwork  
2.5 x 10.5 x 10.5"  
H65



Shoji Hamada  
*Covered jar*, tetsue brushwork  
7.5 x 8 x 8"  
LB1



Shoji Hamada  
*Mizusashi*, ash glaze  
6.5 x 6.25 x 5"  
LB2





Shoji Hamada  
*Pourer*, amber glaze  
4.25 x 7.25 x 8.25"  
LB4



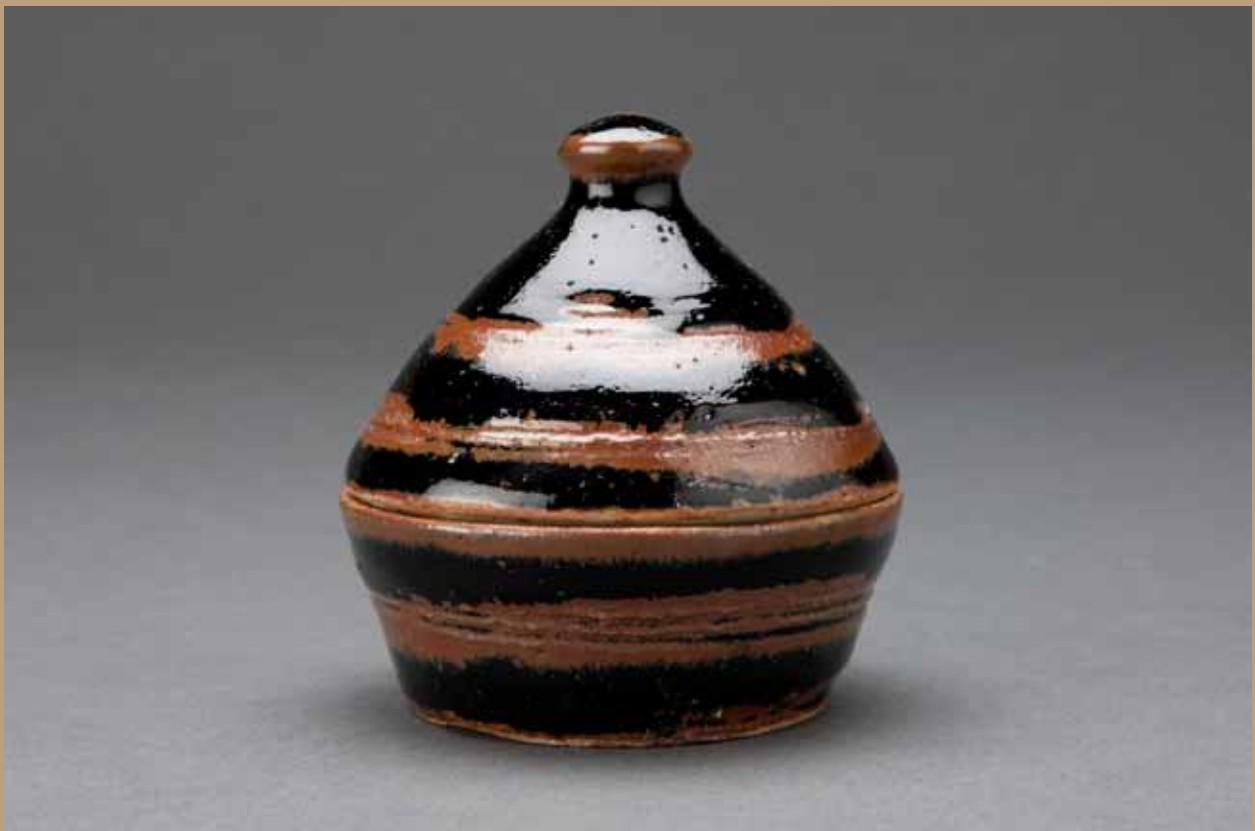
Shoji Hamada  
*Set of five plates, tetsue brushwork*  
1.75 x 7.5 x 7.5"  
NU1303-3



Shoji Hamada  
*Bottle*, tenmoku, khaki, and nuka glazes with finger wipe decoration  
8.5 x 4.75 x 4.75"  
H73 (GB12)



Shoji Hamada  
*Covered box*, tenmoku and nuka glazes  
 3.25 x 3.75 x 3.75"  
 H76 (GB20)



Shoji Hamada  
*Incense burner*, tenmoku and khaki glazes  
 3.5 x 3.25 x 3.25"  
 H80 (GB30)



Shoji Hamada  
*Plate*, tenmoku and nuka glazes  
1.5 x 9.5 x 9.75"  
H82 (GB53)





Shoji Hamada  
*Plate*, tenmoku and nuka glazes  
1.5 x 9.5 x 9.75"  
H83 (GB54)





Shoji Hamada  
*Plate*, tenmoku and nuka glazes  
1.5 x 9.5 x 9.5"  
H84 (GB55)



Shinsaku Hamada  
 Vase, kaki glaze with akae decoration  
 9.25 x 6.25 x 6.25"  
 HS89

**SHINSAKU HAMADA** was born in 1929 in Tokyo, Japan, as the second son of Shoji Hamada. A year later, the Hamada family moved to Mashiko in Tochigi Prefecture. He studied industrial art at Waseda University in Tokyo and thereafter traveled with his father to assist him during demonstrations and lectures. Hamada held his first solo exhibition at the Mitsukoshi Department Store in 1970, and has since had numerous landmark exhibitions there, including a 2009 show to celebrate his 80th birthday. In 1978, Hamada became a Kokugakai National Art Association member and was named Director of the Mashiko Sankokan Museum. In 1999, he received the 27th Shimonoseki Citizens Award. Hamada's work is included in the collections of the Prefectural Governor's residence and the Brooklyn Museum of Art. Hamada continues to exhibit internationally and work alongside his son in the original compound built by his father.



Shinsaku Hamada  
*Faceted vase*, black glaze  
8.5 x 6 x 6"  
HS88



Shinsaku Hamada  
Vase, salt glaze with hakeme decoration  
8 x 3.5 x 3.5"  
HS91



Shinsaku Hamada  
*Plate*, blue glaze  
2.25 x 13.25 x 13.25"  
HS92



Shinsaku Hamada  
Vase, white glaze with akae  
decoration  
5 x 5.25 x 5.25"  
HS90





Left:  
Shinsaku Hamada  
*Incense container*, kaki glaze with akae decoration  
1.25 x 2 x 2"  
HS96  
Center:

Shinsaku Hamada  
*Incense container*, blue glaze with akae  
decoration  
2.75 x 3 x 3"  
HS94

Right:  
Shinsaku Hamada  
*Incense container*, white glaze with akae  
decoraton  
2 x 3.25 x 2.5"  
HS95



Shinsaku Hamada  
*Faceted vase*, salt glaze with hakeme decoration  
11.75 x 8.5 x 8.5"  
HS87



Shinsaku Hamada  
*Faceted chawan*, black glaze  
3.75 x 4.25 x 4.25"  
HS93



Tomoo Hamada  
 Plate, salt glaze  
 1.75 x 14 x 14"  
 HT351

**TOMOO HAMADA** was born in 1967 in Mashiko, Japan, as the second son of Shinsaku Hamada and a grandson of Shoji Hamada. In 1989 and 1991, Hamada received undergraduate and graduate degrees in sculpture from Tama Art University in Tokyo. Tomoo Hamada has exhibited, lectured, and given workshops internationally and was integral in helping the pottery community of Mashiko rebuild from the devastating Tohoku earthquake of 2011. His ceramic works are included in the permanent collections of numerous museums including the Tochigi Prefectural Museum of Fine Arts; the Museum of Fine Arts, Boston; the Victoria & Albert Museum, London; and the Asian Art Museum, San Francisco. He currently lives in Mashiko on the original compound his grandfather built, and works alongside his father. In 2012, he became Director of the Shoji Hamada Memorial Mashiko Sankokan Museum.



Tomoo Hamada  
*Tie vase*, blue and white glazes  
with akae decoration  
12.75 x 8.75 x 10.75"  
HT338





Tomoo Hamada  
*Stacking vase*, kaki glaze with  
akae decoration  
13 x 11.25 x 11.25"  
HT340





Left:  
Tomoo Hamada  
*Stacking vase*, kaki glaze with akae decoration  
12.5 x 7 x 7"  
HT334

Right:  
Tomoo Hamada  
*Stacking vase*, salt glaze  
12.5 x 7 x 7"  
HT335



Tomoo Hamada  
*Chawan*, ji glaze with akae decoration  
 4 x 4.5 x 4.5"  
 HT345



Left:  
 Tomoo Hamada  
*Cross vase*, salt glaze  
 8.75 x 10.5 x 5.5"  
 HT336

Right:  
 Tomoo Hamada  
*Cross vase*, blue glaze with akae decoration  
 9 x 10.5 x 5.5"  
 HT337



Tomoo Hamada  
*Square dish*, blue and white  
glazes with akae decoration  
2.5 x 11.75 x 11.75"  
HT352



Tomoo Hamada  
*Stacking vase*, kaki glaze with akae decoration  
10.75 x 10 x 10"  
HT341





Tomoo Hamada  
*Bottle, kaki glaze with akae decoration*  
8 x 7.5 x 5.25"  
HT342



Left:  
Tomoo Hamada  
*Vase*, salt glaze with hakeme decoration  
6 x 4.25 x 4.25"  
HT343

Center:  
Tomoo Hamada  
*Sake bottle*, salt glaze  
5.5 x 3.25 x 3.25"  
HT361

Right:  
Tomoo Hamada  
*Sake bottle*, salt glaze  
5.75 x 3.5 x 3.5"  
HT362





Tomoo Hamada  
*Chawan*, kaki glaze with akae decoration  
3.5 x 6.5 x 6.5"  
HT344



Left:  
Tomoo Hamada  
*Chawan*, salt glaze  
3.75 x 5.5 x 5.5"  
HT346

Right:  
Tomoo Hamada  
*Chawan*, salt glaze  
3.5 x 4.75 x 4.75"  
HT347



Tomoo Hamada  
*Faceted chawan*, salt and black glazes  
3.5 x 4.75 x 4.75"  
HT348



Tomoo Hamada  
*Sheep shaped incense container*, white glaze  
4 x 5.5 x 2.5"  
HT349



Tomoo Hamada  
*Plate, black and white glazes with akae decoration*  
2.5 x 14.25 x 14.25"  
HT350





Tomoo Hamada  
*Hexagonal dish, black glaze with akae decoration*  
3 x 12.5 x 11"  
HT353



Left:  
Tomoo Hamada  
*Cup*, salt glaze  
4.5 x 3.25 x 3.25"  
HT359

Right:  
Tomoo Hamada  
*Cup*, salt glaze  
4.25 x 3.25 x 3.25"  
HT360





Left:  
Tomoo Hamada  
*Sake bottle*, kaki glaze with akae decoration  
5.25 x 3.5 x 3.5"  
HT363

Right:  
Tomoo Hamada  
*Sake bottle*, black and white glazes with akae decoration  
5.75 x 3.5 x 3.5"  
HT364



Left:  
Tomoo Hamada  
*Yunomi*, blue glaze with akae decoration  
4 x 3.25 x 3.25"  
HT365

Center:  
Tomoo Hamada  
*Cup*, kaki glaze with akae decoration  
3.75 x 3.25 x 3.25"  
HT358

Right:  
Tomoo Hamada  
*Cup*, kaki glaze with akae decoration  
3.25 x 3 x 3"  
HT369



Left:  
Tomoo Hamada  
*Faceted yunomi*, salt glaze  
3.25 x 3.25 x 3.25"  
HT368

Center:  
Tomoo Hamada  
*Yunomi*, salt glaze  
3.5 x 3.25 x 3.25"  
HT367

Right:  
Tomoo Hamada  
*Yunomi*, salt glaze  
3.5 x 3.5 x 3.5"  
HT366



Left:  
Tomoo Hamada  
*Sake cup*, ji glaze with akae decoration  
2 x 3.25 x 3.25"  
HT370

Center left:  
Tomoo Hamada  
*Sake cup*, salt glaze  
2.25 x 2.5 x 2.5"  
HT372

Center right:  
Tomoo Hamada  
*Sake cup*, salt glaze  
2.25 x 2.5 x 2.5"  
HT371

Right:  
Tomoo Hamada  
*Sake cup*, salt glaze  
2.25 x 2.25 x 2.25"  
HT373

# THREE GENERATIONS OF Hamada Ceramics

## DATES

3 June through 9 July 2017

## OPENING RECEPTION

3 June 2017, 3:00 PM to 6:00 PM

*The public is invited to attend. Tomoo Hamada will be present.*



Left:  
Tomoo Hamada  
Vase, blue glaze with akae  
decoration  
3.75 x 3.25 x 3.25"  
HT355

Center left:  
Tomoo Hamada  
Vase, kaki glaze with akae  
decoration  
3.75 x 3.25 x 3.25"  
HT357

Center right:  
Tomoo Hamada  
Vase, blue glaze with akae  
decoration  
3.75 x 3.25 x 3.25"  
HT354

Right:  
Tomoo Hamada  
Vase, ji glaze with akae decoration  
3.75 x 3.25 x 3.25"  
HT356

PUCKER

1967-2017  
CELEBRATING 50 YEARS

GALLERY

PUCKER GALLERY  
240 Newbury Street, 3rd floor  
Boston, MA 02116  
Phone: 617.267.9473  
E-mail: [contactus@puckergallery.com](mailto:contactus@puckergallery.com)

## GALLERY HOURS

Monday through Saturday 10:00 AM to 5:30 PM  
Sunday 10:30 AM to 5:00 PM

We offer one free hour of validated parking at the 200 Newbury Street Garage.  
The garage driving entrance is located on Exeter Street between Newbury and Boylston Streets.  
The nearest MBTA stops are Hynes Convention Center or Copley Station on the Green Line.

Pucker Gallery is a member of the Boston Art Dealers Association and the New England Appraisers Association.