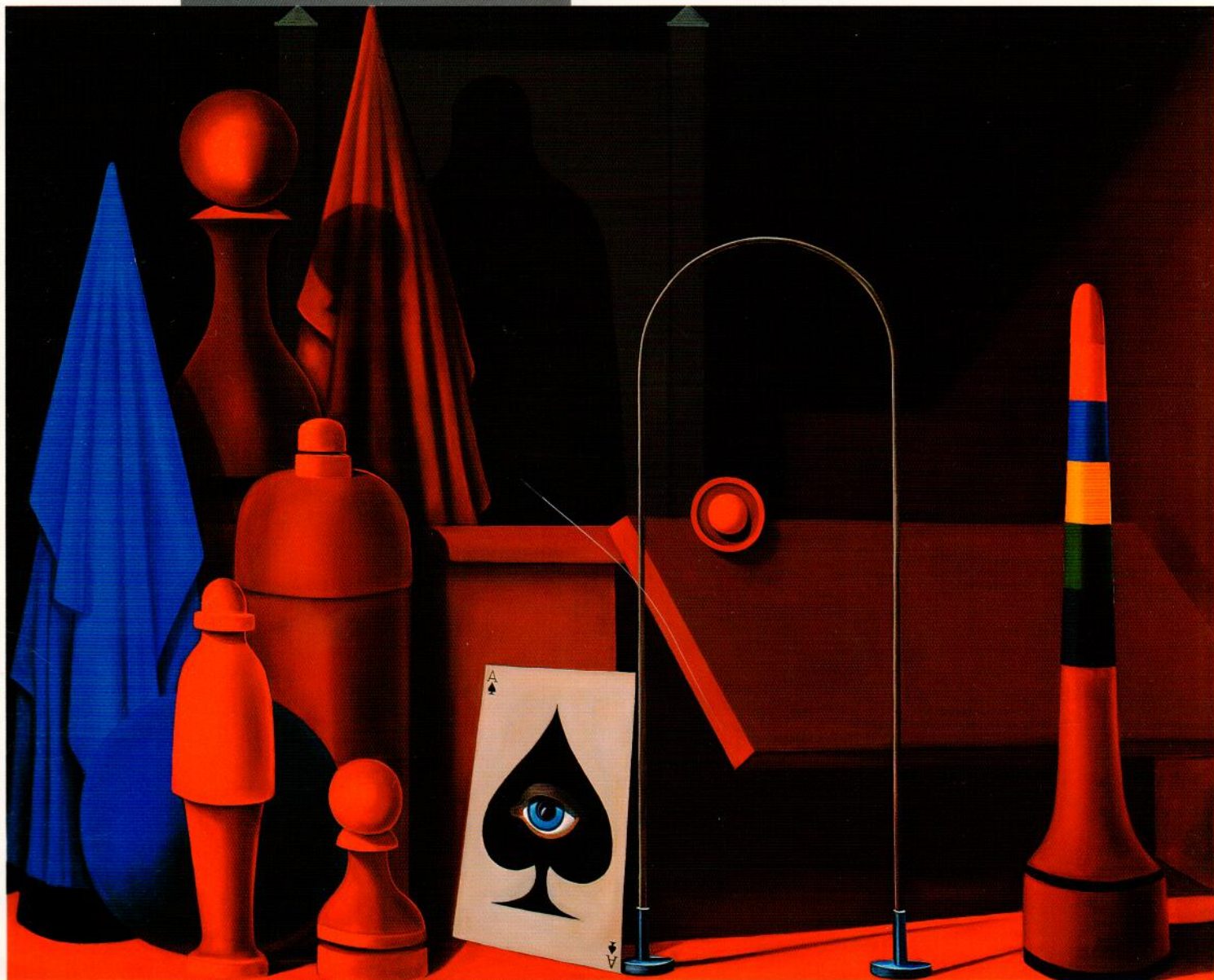


ENRICO
PINARDI



METAPHYSICAL

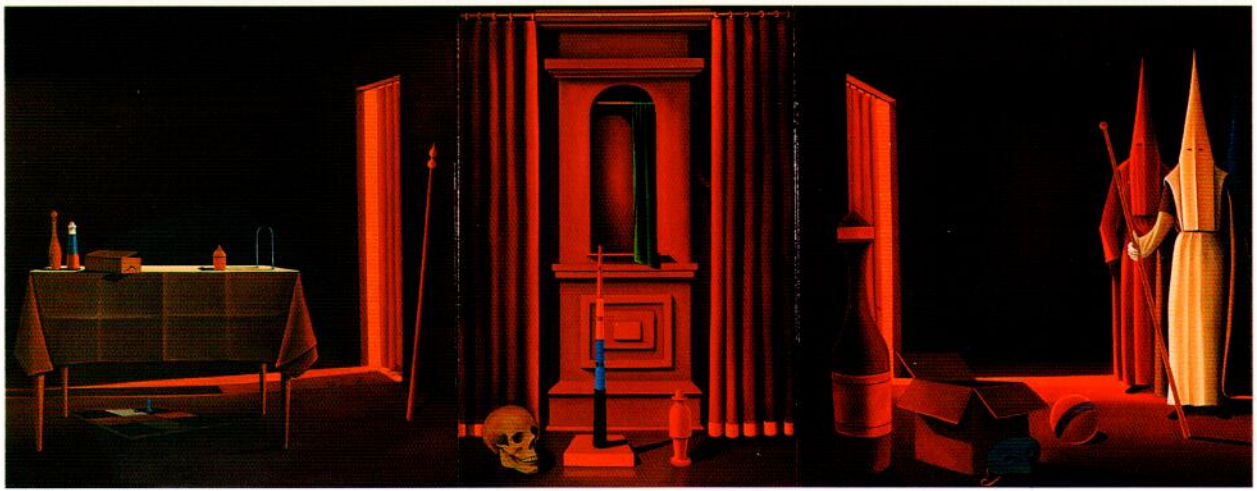
ALCHEMICAL
S P A C E S

PUCKER GALLERY,
BOSTON



2. *Solitaire*, oil on linen, 30 x 48", P75

Front Cover
Pawn, 1989-91, oil on linen, 48 x 60", P88



3. *Skull and Klan*, oil on canvas, 20 x 62 1/4", P92

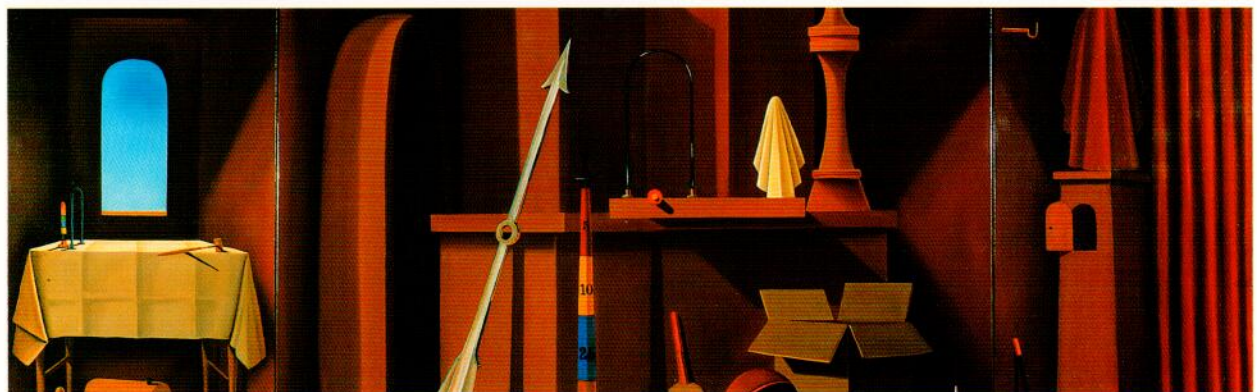
Enrico Pinardi's canvases have a haunting, dream-like quality to them. The precision of his outline and brushwork recall the unnatural clarity and precision of the dream-world, and the mysterious objects scattered across their spaces take on the emblematic significance of illegible portents or secret fears. The repetition of motifs and colors between canvases heightens this impact, seeming to call on a vocabulary of obsession and desire hidden to daylight knowledge. Like the surrealists, Pinardi invites his viewers into the dream-state, simultaneously calling forth and confounding attempts at rational interpretation.

His spaces have a claustrophobic feel of the nightmare; small, segmented boxes with walls that recede sharply in upon themselves. Filled with shadows out of which mysterious spaces loom and menace, they offer no perspective or prospect of escape. Intense blues and reds suffuse these spaces, bathing all within them in an unnatural glow.

The objects that inhabit this dream-world recur with a persistence that lends symbolic weight to the seemingly mundane. Chess pieces, playing cards, dice, and a toy train - the detritus of games and amusements take on an emblematic quality that invites speculation; do they signify chance? the remembered fragments of childhood? or are they simply what they appear to be?

Their import seems heightened by their juxtaposition with elements of horror, instruments of torture, Klansmen, and skulls. The matter-of-factness with which the ordinary and the terrifying co-exist again recalls the world of the unconscious, in which the rationality and order of every-day life is suspended. The illogic of the dream rules in these canvases, both hauntingly familiar and endlessly strange.

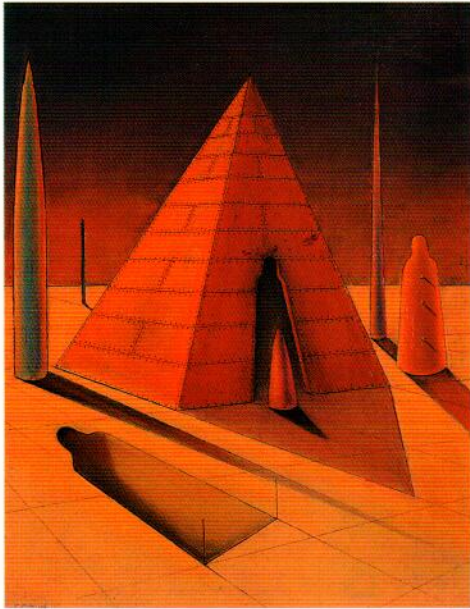
-PMF, 1997



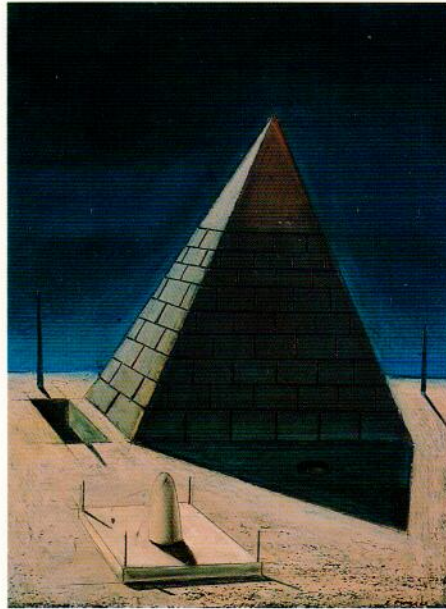
4. *Arrow and Ball (Triptych)*, 1987, oil on wood, 16 7/8 x 42 1/8", P87



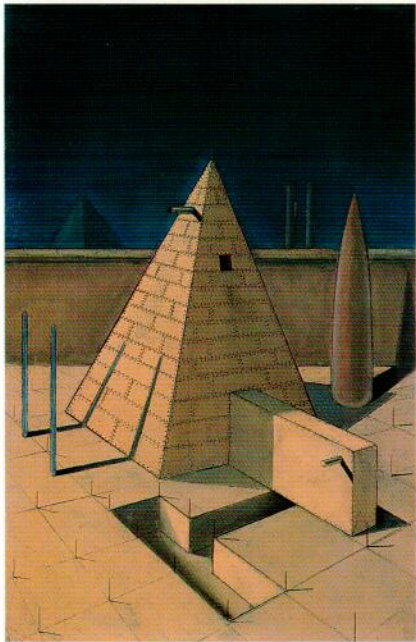
5. *Le Diablo Card (Triptych)*, oil on canvas, 22 x 48", P76



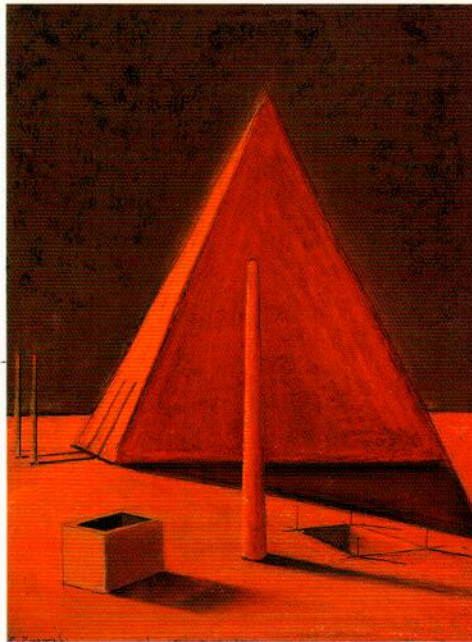
6. *Maze IV*, oil pastel on paper,
13 1/2 x 10 1/2", P63



7. *Maze III*, oil pastel on paper,
12 x 9", P62



8. *Maze II*, oil pastel on paper,
17 1/2 x 11 1/2", P61



9. *Maze V*, oil pastel on paper,
12 x 9", P64



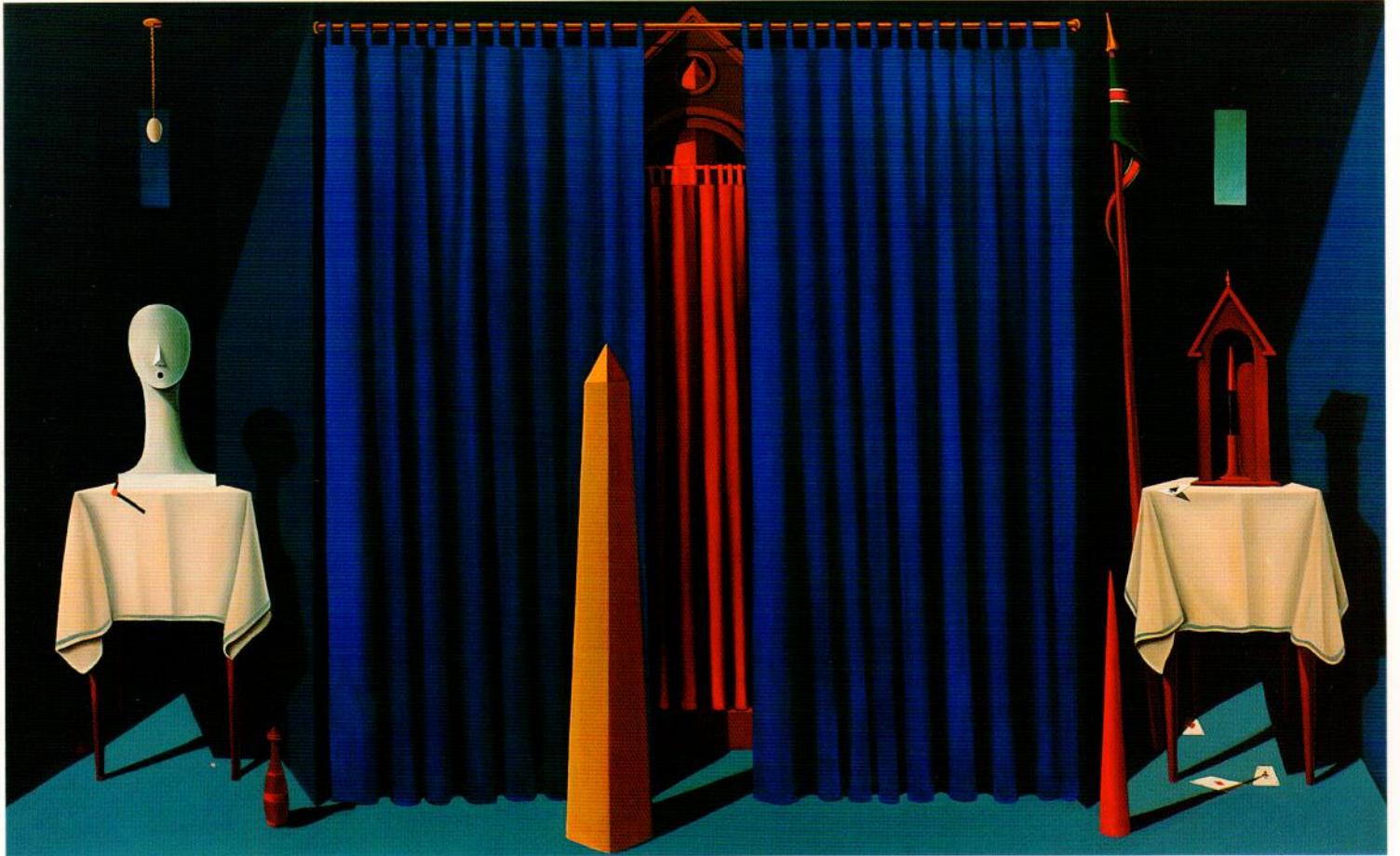
10. *Shooting Gallery (Triptych)*, oil on wood, 16 x 40", P84



11. *Awakening*, oil on wood, 16 x 40", P85



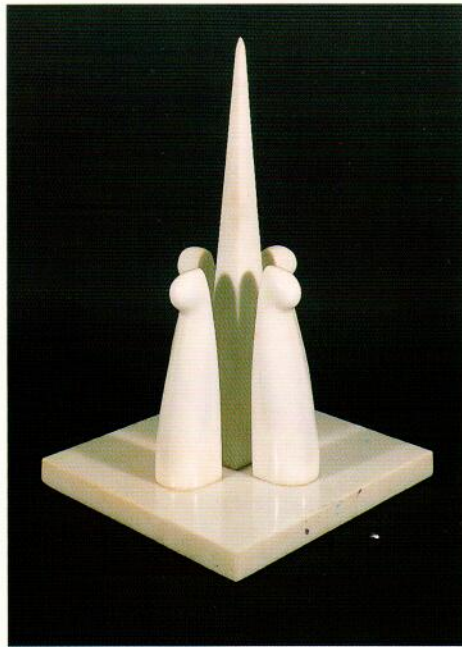
12. *Iron Maiden*, oil on board, 17 3/4 x 42 1/2", P66



13. *See No Evil*, oil on canvas, 30 x 48", P69

One doesn't seek to be a metaphysical artist, it finds you.

Enrico Pinardi



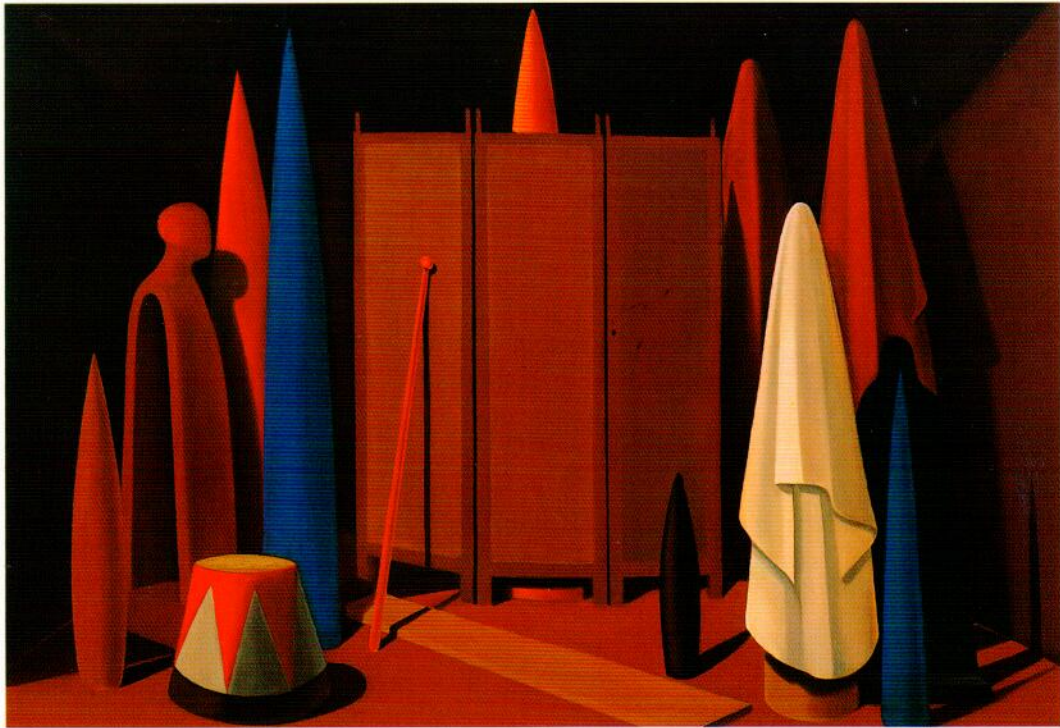
14. *Model*, granite, 15 x 9 1/4", P79



15. *Judgement*, mahogany,
40 x 25 x 25", P77



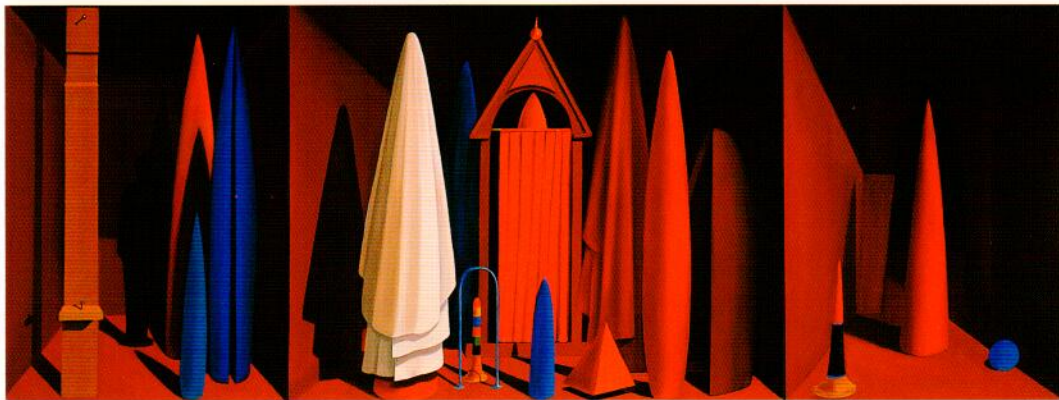
16. *Bearer*, mahogany,
48 x 12 x 9", P78



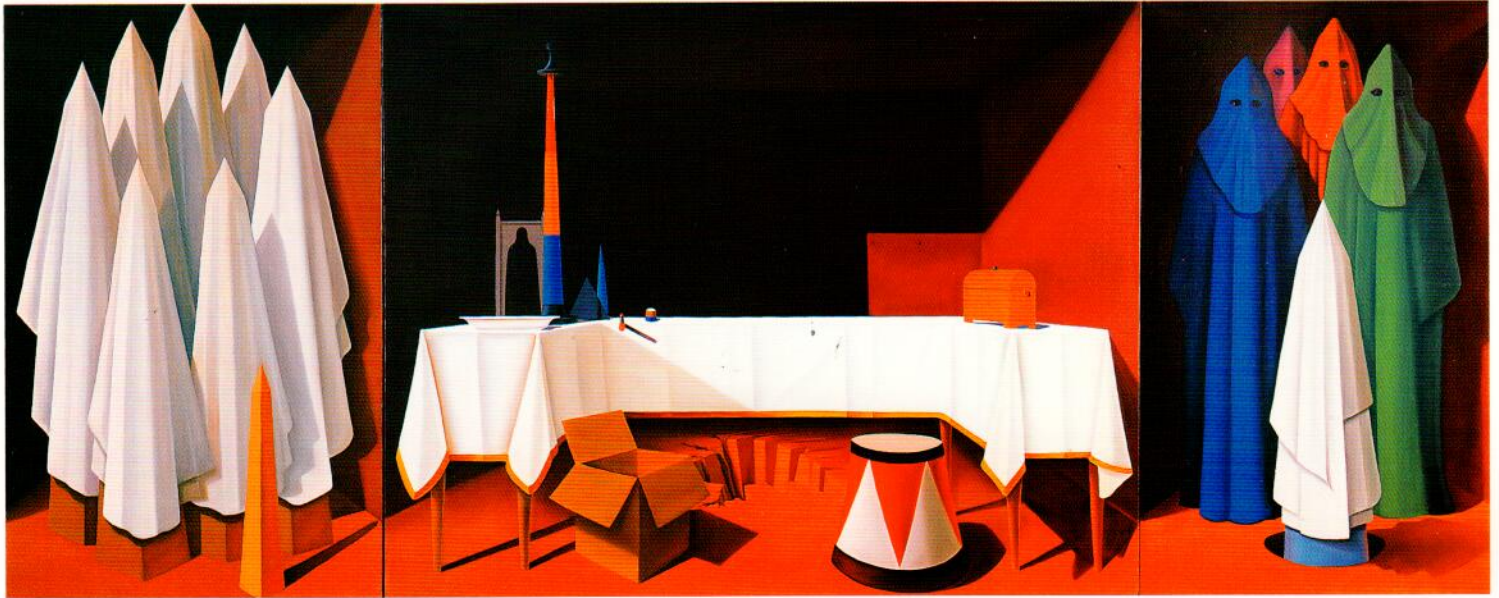
17. *Vigil*, oil on wood, 14 x 20", P73



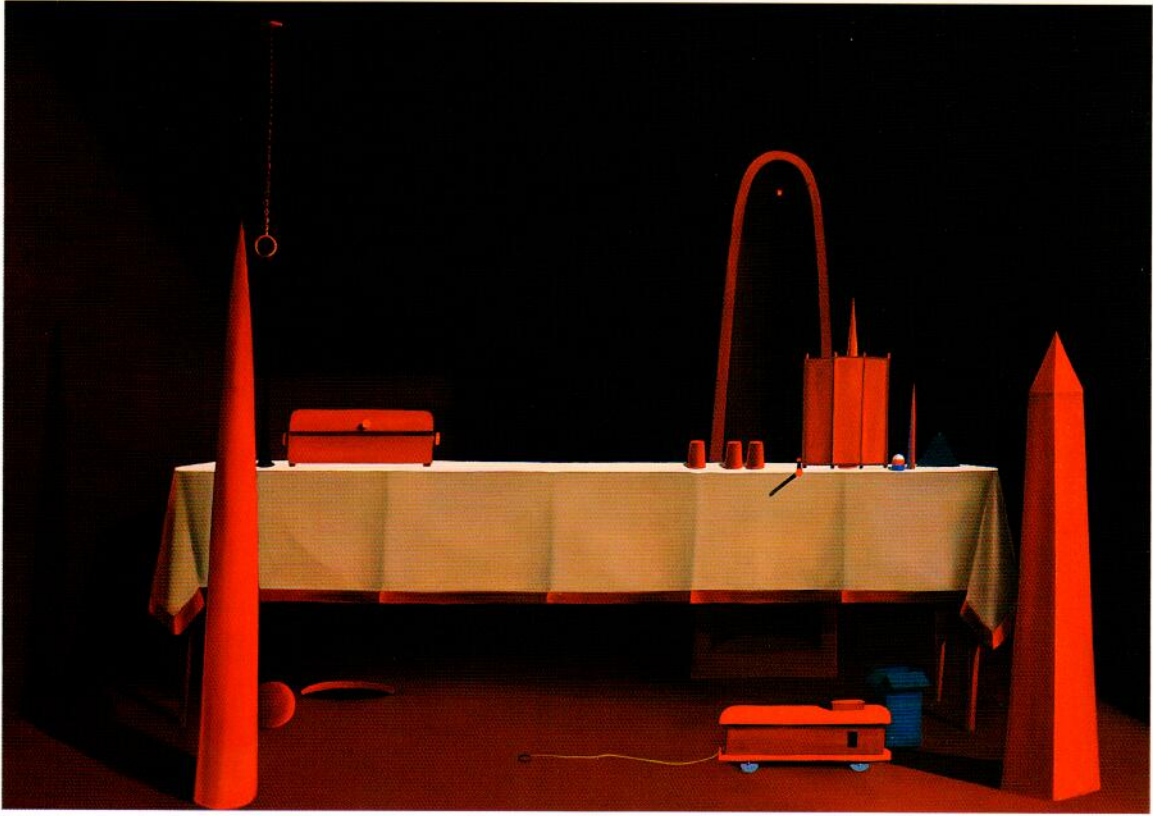
18. *Conjuror*, oil on wood, 16 x 24", P83



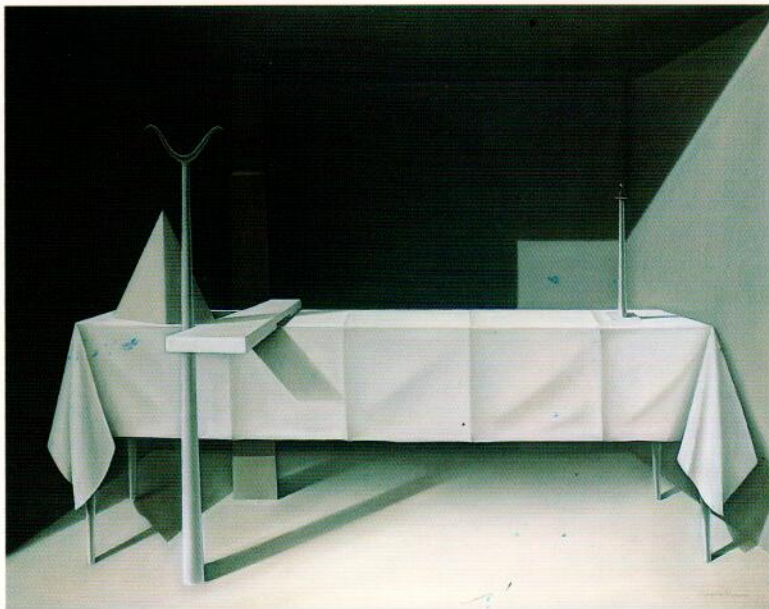
19. *Enigma*, oil on board, 13 3/4 x 37 1/4", P68



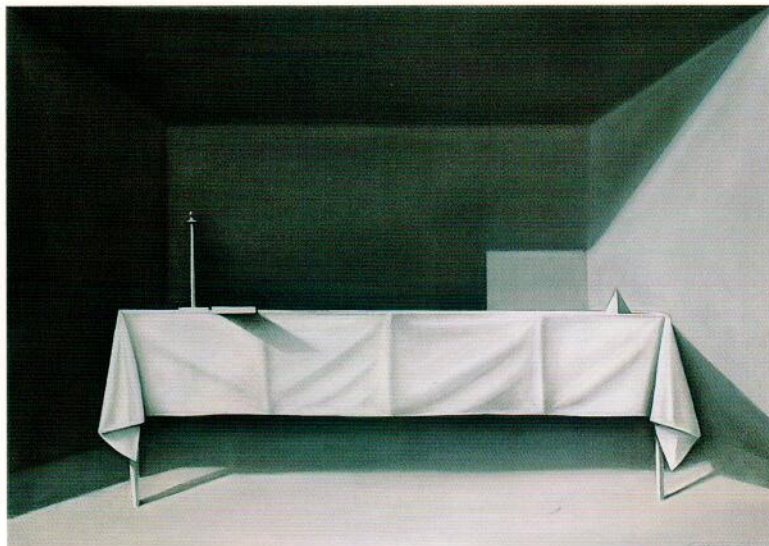
20. *The Great Game*, oil on linen, 48 x 120", P89.



21. *Sanctuary*, oil on wood, 24 x 33 1/2", P86



22. *Pillar*, 1996, charcoal on paper, 43 1/2 x 55 1/2", P70



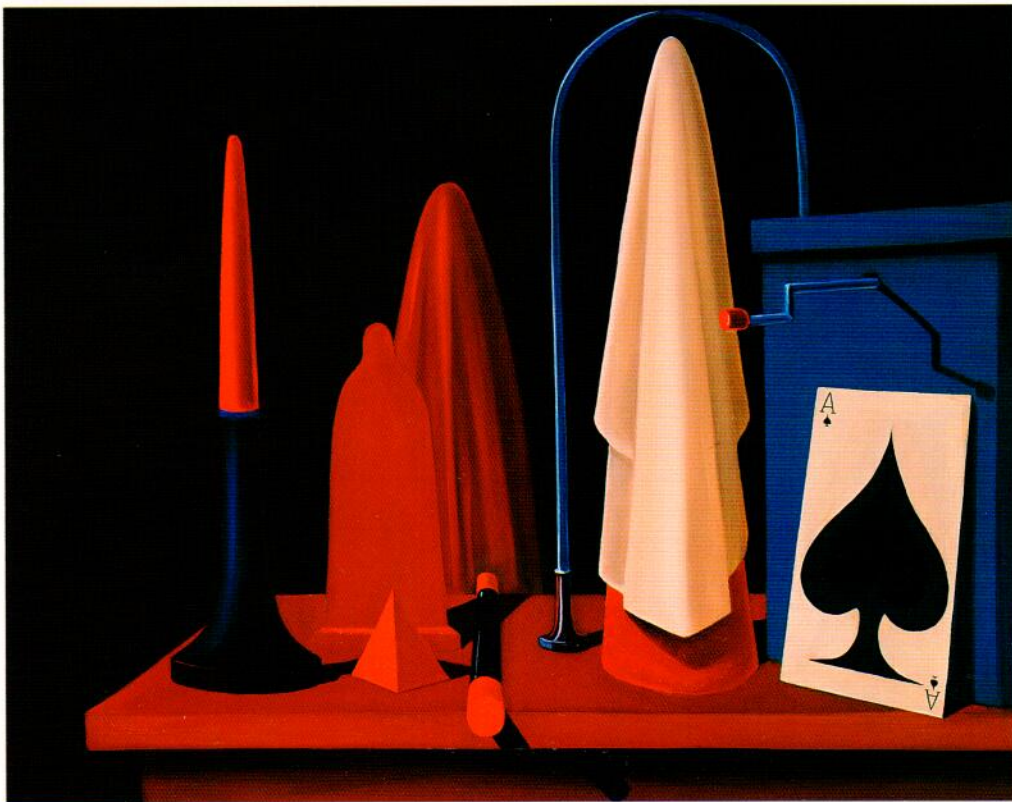
23. *Silence*, 1996, charcoal on paper, 26 1/4 x 38", P71



24. *Offering*, 1996, charcoal on paper, 25 x 36 1/4", P72



25. *Alchemist*, oil on board, 14 x 33 1/2", P65



26. *Oracle*, 1989-91, oil on wood, 14 x 18", P74

ENRICO VITTORIO PINARDI

Born

Cambridge, Massachusetts, 11 February 1934

Education

Sculptor's and Woodcarver's Apprenticeship under Ernesto Pellegrini and Angelo Cascieri, 1951-1956

Boston Museum School of Fine Arts, 1953-1954

Boston Architectural Center, 1955-1957

BSE, Massachusetts College of Art, 1959-1963

MFA, Rhode Island School of Design, 1965-1967

Teaching

Worcester Art Museum School, 1963-1967

Professor of Art, Rhode Island College, 1967-1995

Solo Exhibitions

Painting: Kanegis Gallery, Boston, MA, 1962

Sculpture: Worcester Museum School of Fine Arts,
Worcester, MA, 1963

Carved Wood Sculpture: Kanegis Gallery, 1965

Painting and Sculpture: Kanegis Gallery, 1967

Sculpture, Drawing and Painting: Rhode Island College,
Providence, RI, 1969

Painting, Drawing and Sculpture: Pucker Safrai Gallery,
Boston, MA 1980

Sculpture, Drawing and Painting: Rhode Island College, 1984

Games, Drawing and Painting: Pucker Safrai Gallery, 1988

Sculpture, Drawing and Painting: Vorpai Gallery, New York City,
NY, 1991

Sculpture, Drawing and Painting: Rhode Island College, 1992

Collections

Rose Art Museum, Brandeis University, Waltham, MA

Worcester Museum of Fine Arts, Worcester, MA

DeCordova Museum, Lincoln, MA

Nashua Center for the Arts, Nashua, NH

Chase Manhattan Bank, New York, NY

Mechanics National Bank, Worcester, MA

National Shawmut Bank, Boston, MA

Commonwealth of Massachusetts, Boston, MA

Marmonac, San Ambrogio, Valpolicella, Verona, Italy

Transitron, Inc., Boston, MA

Credits

Design: Donna Bodell

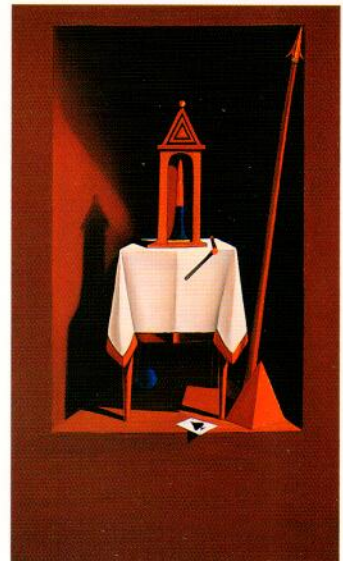
Editor: Jill K. Richardson

Photography: Sean Kirby, Kim Kenney, and Robert Zinck

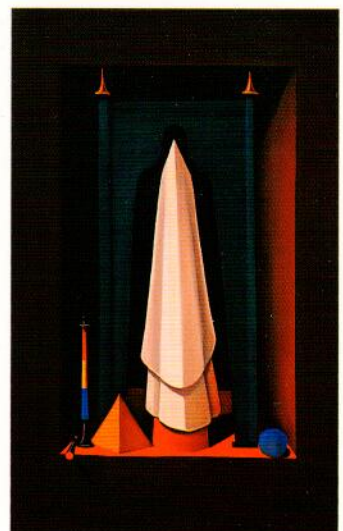
c Pucker Gallery, 1997. Printed in Hong Kong by
South China Printing Company (1988) Limited.



27. *Chance*, oil on wood,
14 x 7 3/4", P80



28. *Dreamer*, oil on
wood, 16 x 9", P82



29. *Sentinel (Triptych)*,
1989-91, oil on wood,
14 x 9", P81



30. *Night Games*, oil on linen, 40 x 108", P90

ENRICO PINARDI
METAPHYSICAL/ALCHEMICAL

Opening Reception:
Saturday, 22 March 1997
3 to 6 PM

The artist will be present.
The public is invited to attend.

Gallery Hours:
Monday to Saturday 10 am to 5:30 pm, Sundays 1 to 5 pm.

Pucker Gallery
171 Newbury Street
Boston, MA 02116-2897
(617) 267-9473 FAX (617) 424-9759
e-mail address: puckergall@aol.com

BULK RATE
U.S. POSTAGE
PAID BOSTON, MA
PERMIT NO, 1906

Member of the Boston Art Dealers Association. One hour free validated parking available on the corner of Newbury and Dartmouth Streets.

Forwarding order and address correction requested.