



FINE CHOICES | 2013

PUCKER GALLERY | BOSTON



MARCO ABARCA  
(Mexican, b. 1962)  
*Music for a Tree*  
mixed media construction  
11 ½ x 10 x 7"  
MA35

## FINE CHOICES | 2013

### *Down memory lane...*

Two score and six years ago we embarked on a remarkable journey. We signed a lease on 3 June 1967 and opened our Gallery at 171 Newbury Street below street level the following October.

The gallery space was designed by the now renowned architects of CBT/Childs Bertman Tseckares, Inc. and was one of their first formal projects. We knew we wanted a welcoming space designed to present fine art, yet we were also committed to education as a fundamental part of our approach.

The vision we established for the Gallery in 1967 still holds true today:

Aesthetic excellence, within the framework of our personal experience and taste, will be the primary canon of judgment in selecting works to exhibit. Content, style, or country of origin will be secondary. We shall exhibit works by leading artists of many countries. The Gallery will serve not only as a showcase for art, but also—on a limited basis—as a center for lectures and programs related to the works on display. We shall encourage visits by students and art classes. Whenever possible we shall prepare relevant biographical and interpretive information about the artists as well as arrange meetings with visiting artists.

Thank you for supporting our journey and enabling us to discover and share what sparks the imagination and uplifts the spirit!

— *Bernie Pucker, Spring 2013, Boston*



**JOSEPH ABLOW**  
 (American, 1928–2012)  
*Forms Remembered*  
 oil on canvas  
 28 ¼ x 42 ¼"  
 JA188



**ROZ KAROL ABLOW**  
 (American, b. 1931)  
*Divisions*  
 acrylic on museum board  
 18 ¾ x 16 ½"  
 RA44

**SOUTHERN  
AFRICAN ARTISTS**

*Mbiya, Tonga Beerpot*  
clay  
8 ¼ x 10 ½ x 11"  
SA391

*Cooking Pot, Zambia*  
clay  
4 ¼ x 6 ½ x 5 ¼"  
SA266

*Cooking Pot, Zambia*  
clay  
5 x 7 x 7"  
SA471

*"Nkoya," Lunda*  
*Sitting Stool*  
wood  
8 x 10 ¼ x 10"  
SA69



**DAVID ARONSON**  
(American, b. 1928 in Lithuania)  
*Woman with Parrot*  
oil pastel on paper  
7 ½ x 7"  
AP256

Right:  
*Hanukkah Menorah, Angels of Light*  
polished bronze, edition of 200  
17 x 17 x 5"





**SAMUEL BAK**  
(American, b. 1933 in Poland)

*A Street in Vilna*

oil on canvas

40 x 30"

BK1076

Bottom left:

*Found in Translation*

oil on canvas

22 x 28"

BK1046

Bottom right:

*Found in Translation II*

oil on canvas

22 x 28"

BK1047



**ZEVI BLUM**  
 (American, 1933–2011)  
*Manichean Tableau*  
 hand-colored etching, state II  
 edition 2 of 5  
 17 ½ x 23 ¾"  
 ZB156



**ROGER BOWMAN**  
 (American, b. 1948)  
*Collection*  
 watercolor and gouache on paper  
 20 x 15"  
 RB177



**BROTHER THOMAS**

(American, 1929–2007)

*Moon form vase*

ice crackle with iron yellow glaze

porcelain

16 1/2 x 16 3/4 x 5 1/2"

TH2035B

Below:

*Large decorative plate*

black and white glaze

porcelain

2 x 17 1/2 x 17 1/2"

TH1517B



**PAUL CAPONIGRO**

(American, b. 1932)

*Van Gogh's Passion, Cushing, ME, 1990*

silver gelatin print

9 x 10 1/2"

PC68

*Pebble Beach, CA, 1969*

silver gelatin print

8 1/2 x 12 1/4"

PC76x

**MARC CHAGALL**

(Russian and French, 1887–1985)

*Le Soleil Jaune*

color lithograph

edition 19 of 75

M. 556

28 1/2 x 32"



**SUNG JAE CHOI**

(Korean, b. 1962)

*Buncheong bottle*white slip with iron drawing  
stoneware

11 1/2 x 6 1/4 x 6 1/4"

SC297

*Buncheong jar*white slip with iron drawing  
stoneware

9 1/2 x 9 x 9"

SC291

**ALI CLIFT**

(American, b. 1949 in Canada)

*Sky Blue*

cloth painting with drawing

48 x 32 1/2"

AC335

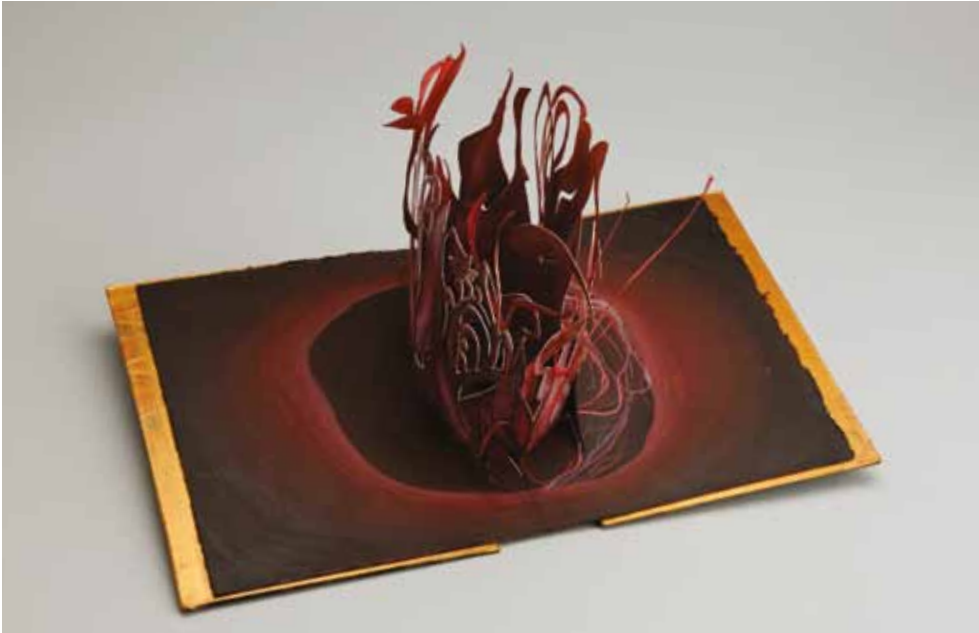
**MARK DAVIS**  
 (American, b. 1954)  
*Tribute #3*  
 medium standing mobile  
 in brass and aluminum  
 with steel wires, oil and  
 acrylic colors  
 5 ½ x 11 x 10 ½"  
 MD615

Middle:  
*Tribute #1*  
 medium standing mobile  
 in brass and aluminum  
 with steel wires, oil and  
 acrylic colors  
 11 ½ x 14 x 7"  
 MD613

Bottom:  
*Tribute #7*  
 standing mobile in brass  
 and aluminum with steel  
 wires, oil and acrylic colors  
 11 x 15 x 14"  
 MD621

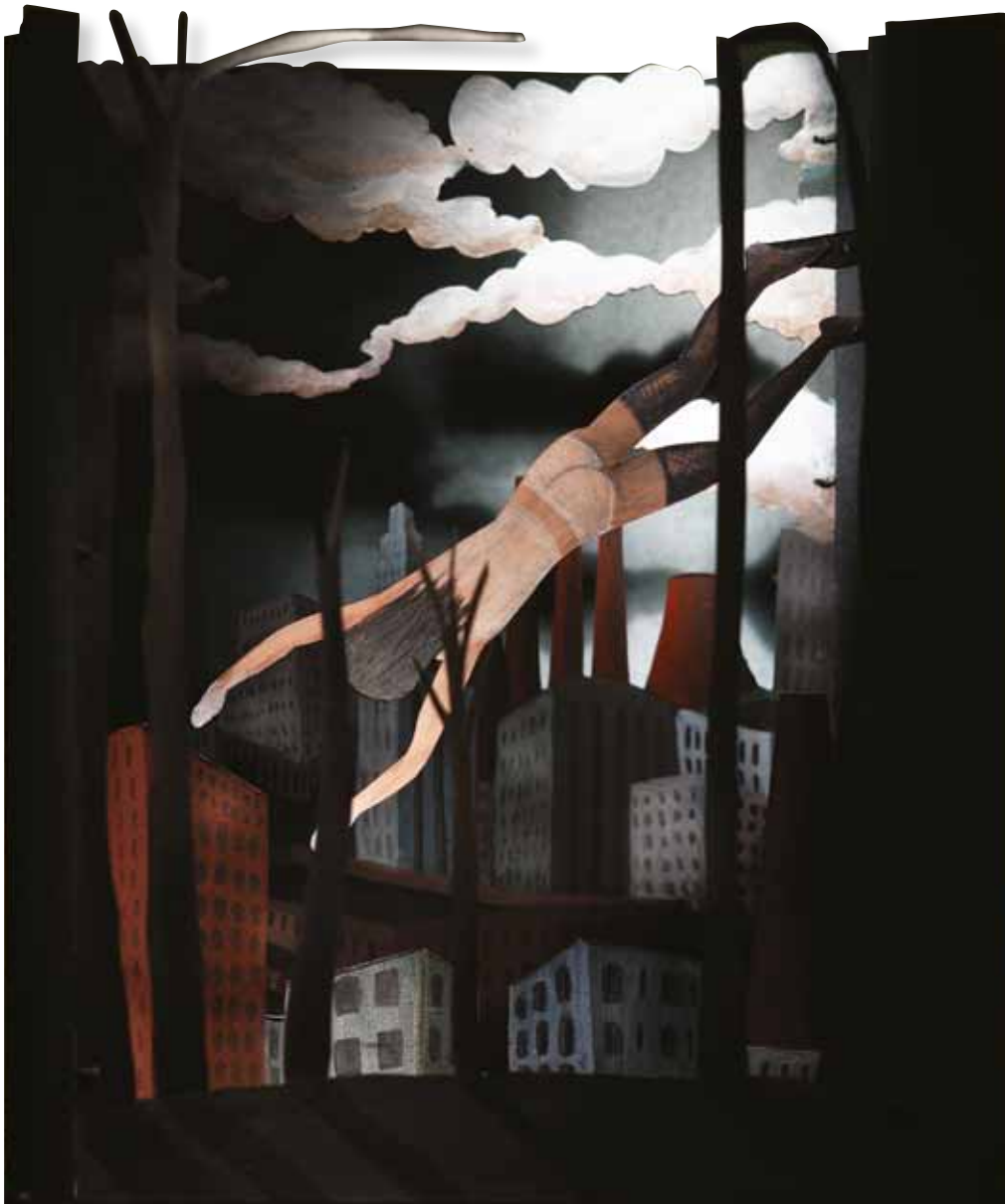


**ROBERT ESHOO**  
 (American, b. 1926)  
*Once Around VI*  
 watercolor on paper  
 22 ¼ x 24"  
 RE276



**ANDREA DEZSŐ**  
 (American, b. 1968 in Romania)  
*Heart pop-up book*  
 mixed media construction  
 Open: 7 ¼ x 15 ¼ x 9"  
 Closed: ½ x 9 x 8 ½"  
 AD41

Below:  
*Flying or Falling from the Window*  
 tunnel book with cotton rag paper,  
 linen thread and acrylic paint  
 7 ¼ x 5 ½ x 6 ¾"  
 AD44



**PAUL CARY GOLDBERG**

(American, b. 1950)  
*Box, Baptisia and Seeds*  
 ink jet print  
 edition of 15  
 16 ¾ x 22"  
 PCG22

**FANCE FRANCK**

(American, worked in France, 1931–2008)  
*Rectangular vase*  
 cypress motif in blue underglaze  
 porcelain  
 8 ¾ x 5 ¾ x 6"  
 PG197

**GERALD GARSTON**

(American, 1925–1994)  
*Compote with Cherries*  
 oil on canvas  
 41 x 37"  
 G34

**YOSHINORI HAGIWARA**

(Japanese, b. 1974)

*Vase*

kaki glaze

stoneware

17 ¼ x 14 ½ x 14 ½"

YH207

**SHOJI HAMADA**

(Japanese, 1894–1978)

*Bowl*

green glaze with poured decoration

stoneware

4 ½ x 18 x 18"

H42

**TOMOO HAMADA**

(Japanese, b. 1967)

*Bottle*

salt glaze

stoneware

10 ¼ x 9 ½ x 4 ½"

HT191

**SHINSAKU HAMADA**

(Japanese, b. 1929)

*Vase*

salt glaze

stoneware

5 ¾ x 6 ¼ x 6 ¼"

HS31

**SHOJI HAMADA**

(Japanese, 1894–1978)

*Textured bottle*

black glaze

stoneware

10 ½ x 5 ½ x 5 ½"

H36

**JEFFREY HESSING**  
 (American, b. 1952)  
*Silver*  
 oil on canvas  
 21 x 25 ¾"  
 JH770



**FRIEDENSREICH HUNDERTWASSER**  
 (Austrian, 1928–2000)  
*Slow Travel Under the Sun, La Barca-Regentag*  
 silk screen in 10 colors with metal imprints in 7 colors  
 Edition 139 of 251  
 26 ½ x 16 ¾"  
 HWG40, 683



**RANDY JOHNSTON**  
 (American, b. 1950)  
*Square vase with bottleneck top*  
 nuka glaze with wax resist brushwork  
 stoneware  
 15 ¾ x 6 ¾ x 6 ¾"  
 RJ334



**INUIT CARVING**  
**ASHEVAK TUNNILLIE**  
 (Canadian, b. 1956)  
*Walking Bear*  
 Cape Dorset  
 soapstone  
 13 ½ x 18 ½ x 9"  
 IN544

**JUDY KING**  
(American, b. 1934)  
*Majestic*  
mixed media collage  
2 ¾ x 3 ¾"  
JK186



**TONY KING**  
(American, b. 1934 in Canada)  
*Oak on Oak*  
ink jet print  
13 ½ x 19 ½"  
BA404





**MALLORY LAKE**  
 (American, b. 1950)  
*The Lagoon*  
 pastel on paper  
 20 x 26"  
 LK714



**JAN KOLLWITZ**  
 (German, b. 1960)  
*Sara (large bowl)*  
 stoneware  
 2 ¼ x 18 x 18"  
 KJ70



**YOUNG JAE LEE**  
 (Korean, works in Germany, b. 1951)  
*Spindle vase*  
 feldspathic glaze  
 stoneware  
 12 ¾ x 13 ¼ x 13 ¼"  
 YL211

**KEN MATSUZAKI**

(Japanese, b. 1950)

*Large plate*

oribe glaze

stoneware

6 x 27 x 27"

MK737

Below:

*Rectangular vase*

yohen natural ash glaze

stoneware

13 ¼ x 15 x 15"

MK720





**HIDEAKI MIYAMURA**

(Japanese, b. 1955)

*Vase*

blue hare's fur glaze

porcelain

15 x 9 x 9"

HM419



**MARIA MULLER**

(American, b. 1950 in Germany)

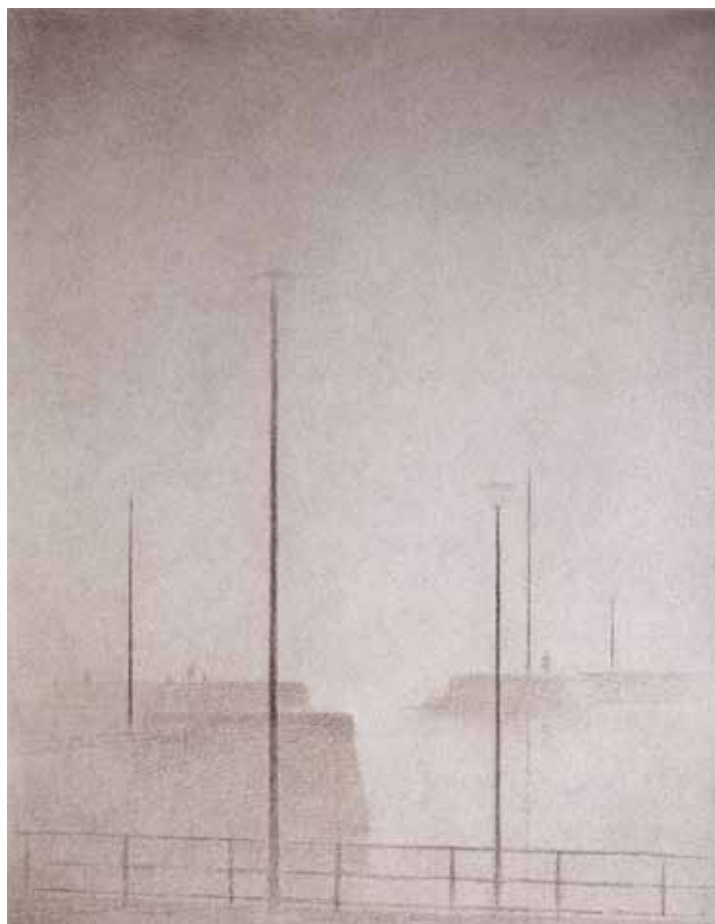
*Spruce and Yellow Sky*

hand-colored photograph

edition of 10

6 x 9"

MM213



**GUNNAR NORRMAN**

(Swedish, 1912–2005)

*Dimma I hamnen (Fog in the Harbor)*, 1981

charcoal on paper

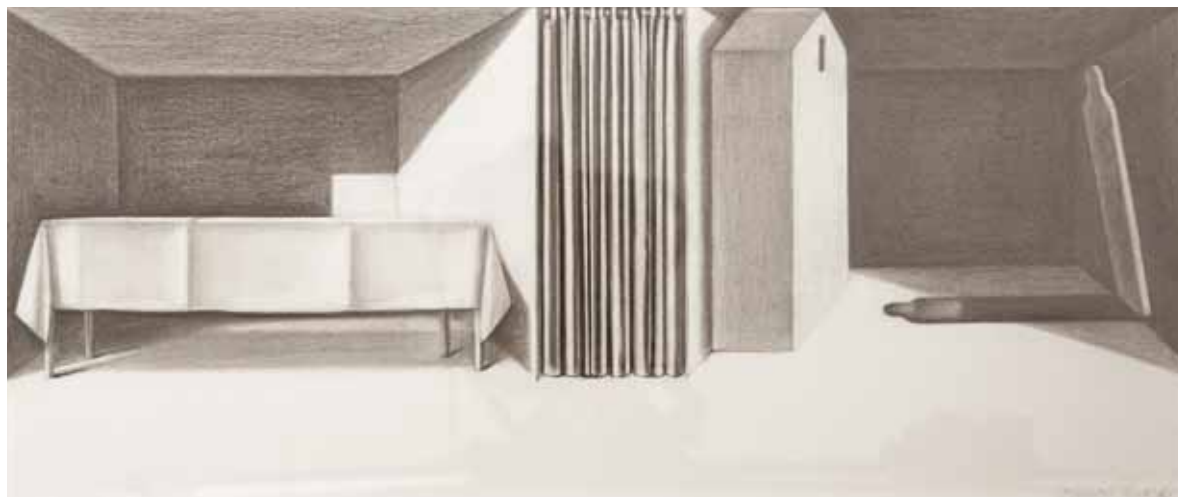
24 1/2 x 19 1/4"



**CHANA ORLOFF**  
 (Ukrainian, 1888–1968)  
*Le Basset*  
 bronze  
 edition 5 of 8  
 10 x 6 ¼ x 27 ¼"  
 Ref #131



**ONDA YAKI**  
 Japanese Folk Pottery  
*Tobikanna Otsubo*  
 stoneware  
 23 ½ x 19 x 19"  
 ON43



**ENRICO PINARDI**  
 (American, b. 1934)  
*Where Spirits Gather*  
 graphite on paper  
 6 ¾ x 15 ¾"  
 P140

Below:  
*Seduction*  
 oil on canvas  
 22 x 28"  
 P213



**MARGUERITE ROBICHAUX**

(American, b. 1950)

*Twin Falls*

oil on linen

28 x 48"

MR163

**PHIL ROGERS**

(Welsh, b. 1951)

*Faceted bottle*

tenmoku and nuka glazes

stoneware

10 3/4 x 6 1/2 x 6 1/2"

PR1353

*Press-moulded bottle*

tenmoku glaze with finger

wiped decoration

stoneware

9 x 4 1/4 x 4 1/4"

PR1014

*Bottle*

tenmoku and ash glazes with finger

wiped decoration

stoneware

12 x 7 x 7"

PR1349

*Lidded Jug*

tenmoku and nuka glaze

with incised and impressed decoration

stoneware

7 1/2 x 6 1/4 x 4"

PR647

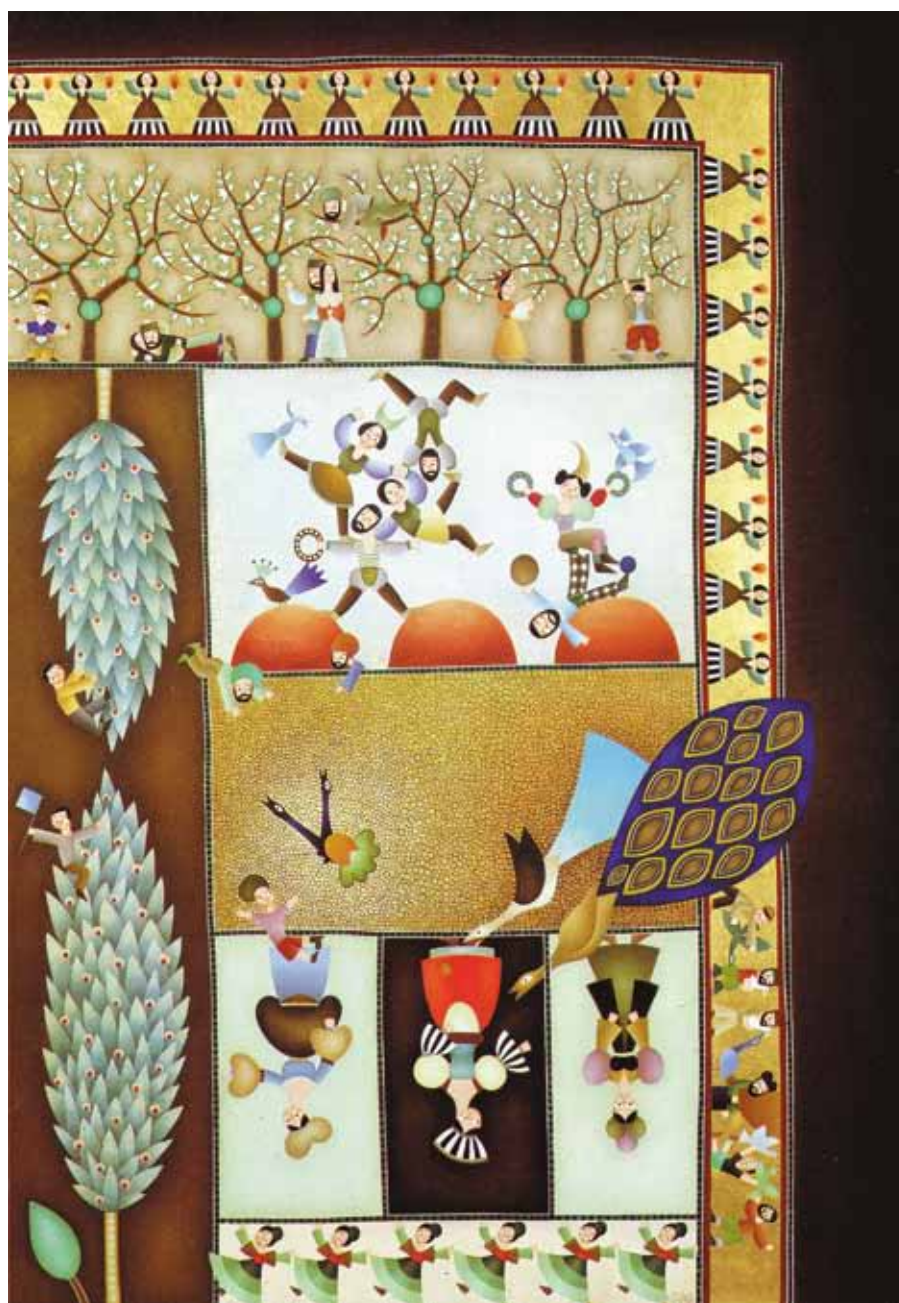


**JIM SCHANTZ**  
 (American, b. 1955)  
*Tiepolo Sunset*  
 oil on canvas  
 48 x 48"  
 JMS670



**MAKOTO YABE**  
 (Japanese, 1947–2005)  
*Large bowl*  
 green wood ash glaze and white slip with impressed decoration  
 stoneware  
 5 ¼ x 15 ¼ x 15 ¼"  
 MY130

**REUVEN RUBIN**  
 (Israeli, 1893–1974)  
*The Rest on the Flight to Egypt*  
 oil on canvas  
 11 ½ x 13 ½"  
 CJP5



**DAVID SHARIR**  
 (Israeli, b. 1938)  
*Party I*  
 oil with gold leaf on canvas  
 40 x 30"  
 CSI



**BILL ARON***(American, b. 1941)**Eiffel Tower from the Top of Notre Dame*

ink jet print

10 x 38"

AB10

**TATSUZO SHIMAOKA***(Japanese, 1919–2007)**Jar*cobalt blue salt glaze with rope decoration  
and slip inlay

stoneware

8 ¾ x 8 ½ x 8 ½"

#149

*Bowl*cobalt blue salt glaze with rope decoration  
and slip inlay

stoneware

3 ¼ x 9 x 9"

#228

*Vase*cobalt and white glazes with rope decoration  
and slip inlay

stoneware

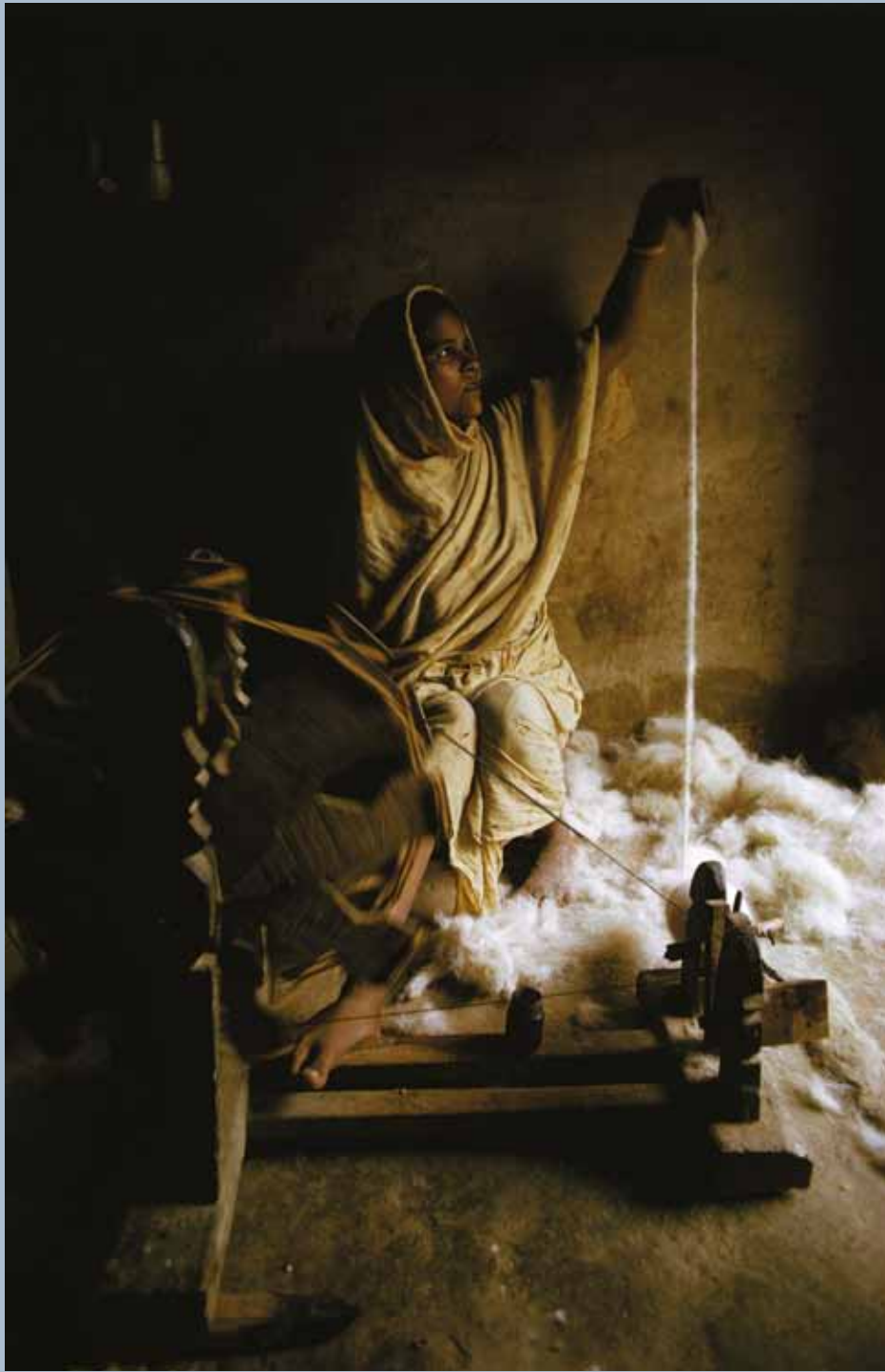
14 x 5 x 5"

LA13

**PABLO PICASSO**  
 (Spanish, 1881–1973)  
*Garçon et dormeuse à la chandelle*  
 etching and aquatint  
 Suite Vollard #26, Bloch 226  
 9 x 11"  
 DJ18

Below:  
*Quatre Femmes Nues et Tête Sculptée*  
 etching  
 G424/v, sv82, Bloch 219  
 9 x 12"  
 DJ21





CARY WOLINSKY  
(American, b. 1947)  
*The Spinner, Bhadohi, India*  
giclée print  
27 x 18"  
CW18

CREDITS:

*Design:* Leslie Anne Feagley | *Editors:* Destiny M. Barletta and Tess Mattern | *Photography:* John Davenport  
© 2013, Pucker Gallery | Printed in China by Cross Blue Overseas Printing Company

# PUCKER GALLERY

ESTABLISHED 1967 BOSTON

## PUCKER GALLERY

171 Newbury Street | Boston, MA 02116  
Phone: 617.267.9473 | Fax: 617.424.9759  
Email: [contactus@puckergallery.com](mailto:contactus@puckergallery.com)

## CHANGE SERVICE REQUESTED

Please visit [www.puckergallery.com](http://www.puckergallery.com) to view current and past exhibition catalogues, experience audio tours, and subscribe to the *Artwork of the Week* e-mail list.

### GALLERY HOURS:

Monday through Saturday 10:00 AM to 5:30 PM | Sunday 10:30 AM to 5:00 PM

We offer one free hour of validated parking at the 200 Newbury Street Garage. The garage driving entrance is located on Exeter Street between Newbury and Boylston Streets. The nearest MBTA stop is Copley Station on the Green Line.

Pucker Gallery is a member of the Boston Art Dealers Association and the New England Appraisers Association.



## FINE CHOICES | 2013

### DATES:

20 July through 25 August 2013

### OPENING RECEPTION:

20 July, 3:00 PM to 6:00 PM

**The public is invited to attend.**

Above:

PAUL CAPONIGRO  
(American, b. 1932)  
*Running White Deer*  
County Wicklow, Ireland, 1967  
silver gelatin print  
7 1/2 x 19"  
PC51

On the cover:

BROTHER THOMAS  
(American, 1929–2007)  
*Large Decorative Plate*  
textured blue and white glaze  
porcelain  
2 3/4 x 20 1/4 x 20 1/4"  
TH2136