

Fine Choices ■ 2023



Pucker Gallery ■ Boston

“Contemplating one’s mortality is at the heart of real, truly vibrant human existence. Without an honest personal reflection on the limitations imposed by one’s mortal condition, life may never be fully lived or appreciated in the deepest sense.”

■ DANIEL B. HINSHAW ■

Thriving in the Face of Mortality: Kenosis and the Mystery of Life

AS WE CELEBRATE THE 56TH YEAR OF THE GALLERY’S EXISTENCE AND our remarkable journey, we feel compelled to emphasize that the art that we share with you has been selected because of its essential focus on the essence of our shared humanity.

In doing so, we realize that art itself calls us to reflect upon the fragility of our human condition. Why are we alive? How can we live each day to the fullest? In what ways can we work towards a more equitable and kinder world for all?

We hope the center and spirit of these Fine Choices will initially engage you, then serve to enliven your desire to be awakened and challenged to the thrills of radical amazement and positive deeds. How wonderful are the moments when a work of art stimulates you to view a friend in a fresh and positive light, or to experience a sunset or sunrise anew?

Art has added to the quality of your life. You become your very best self.

Art at its best enables us to experience each day with gratitude and attentiveness, to be more compassionate with ourselves and those we meet along the road of life.

This collection is an invitation to each of you to engage with those closest to you and those around you, to be uplifted as you uplift.

Here is to *Fine Choice 2023*—and to you and your love of art.

■ BERNIE AND SUE ■

Spring 2023



■ Tomoo Hamada ■

Large plate
Stoneware
Kaki glaze with akae decoration
3.75 x 21.75 x 21.75"
HT124



■ David Aronson ■

Avenging Angel
Bronze, edition of 12
43 x 18 x 23"



■ Jeffrey Hessing ■

Forecast Uncertain
Oil on canvas
25.5 x 32"
JH644



■ Robert Eshoo ■

Life Lines, February 2, 2004

Standing construction

17.5 x 26.5 x 3"

RE230



■ Stephen Althouse ■

Rake I

Archival pigment print on heavy weight acid-free cotton rag paper, edition of 15

48 x 35.5"

ALT5



■ Samuel Bak ■

The Power of Many
Oil on canvas
40 x 30"
BK2830



■ Onda Yaki ■

Water lily bowl

Stoneware

Tobikanna (blade skip) design and poured amber glaze

9 x 16.5 x 17"

ON393



■ Zevi Blum ■

Disembarkation

Black and white etching, edition of 100

23.5 x 17.75"

ZB4



== Friedensreich Hundertwasser ==

Exodus into Space

Silkscreen in 30 colors, including 2 phosphorescent, with metal imprints in 4 colors, 1,502/3,000

Format 500 x 670 mm, Image 415 x 592 mm

HWG47, 650A



== Young Jae Lee ==

Spindle vase

Stoneware

Talc and feldspar glaze

13 x 14 x 14"

YL215



■ Shinsaku Hamada ■

Flat bottle
Stoneware
Brush decoration
8.5 x 6.5 x 4"
HS113

9



■ Andrea Dezsö ■

Seven Angels
Watercolor and ink on handmade Japanese Kitakata paper
16.5 x 20.25"
AD160



■ Ali Clift ■

Go Fly a Kite
Cloth painting and drawing
36 x 35.5"
AC392



■ Hisaaki Kamei ■

Tea bowl (chawan)
Stoneware
Takatori yellow glaze
3.5 x 5.25 x 5.25"
HK46

Tea bowl (chawan)
Stoneware
Aurora glaze with tobikanna decoration
3.25 x 5.25 x 5.25"
HK42

Tea bowl (chawan)
Stoneware
With seam (tojime), Verdigris patina glaze
3 x 4.75 x 4.75"
HK44



■ Roger Bowman ■

Shelter with Tornado
Watercolor and gouache on paper
22 x 15"
RB118



■ Kelly Qimirpik (Inuit Artist, Cape Dorset) ■

Woman Sewing
Soapstone
15 x 13.5 x 10"
IN597



■ Igor Galanin ■

House with Wilma
Acrylic on canvas
30 x 40"
GA81



■ Enrico Pinardi ■

Alchemist (Triptych)

Oil on board

14 x 33.5"

P65



■ Yoshinori Hagiwara ■

Vase

Stoneware

Kaki glaze

14 x 10.75 x 10.75"

YH900



■ Hideaki Miyamura ■

Bottle

Porcelain

Purple hare's fur and starry night glaze

15 x 7.5 x 7.5"

HM678



■ Cary Wolinsky ■

Pearl Shoal Waterfall

Jiuzhaigou, Sichuan, China, October 8, 1984

Archival pigment print

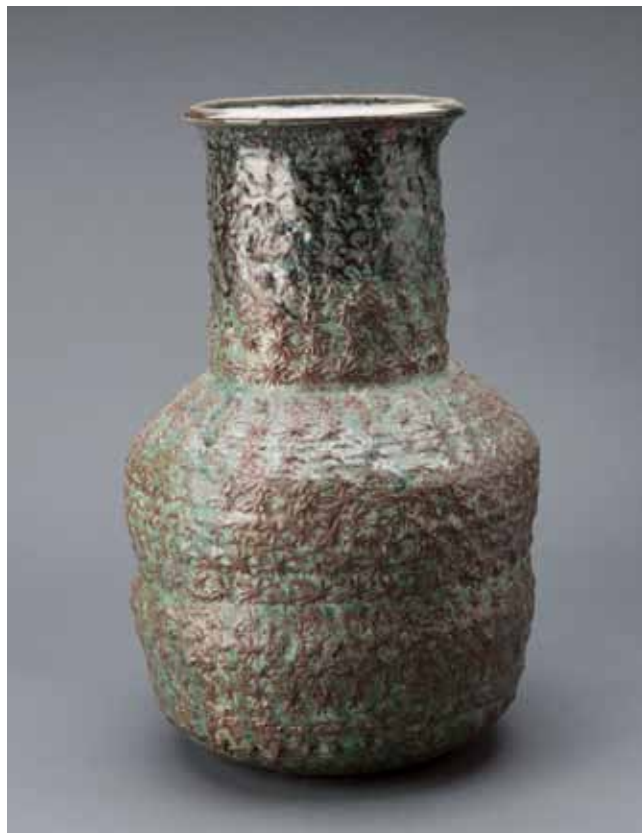
18 x 27"

CW59 (0084)



▣ **Mallory Lake** ▣

San Michele, Tuscany
 Pastel on paper
 12 x 12"
 LK773



▣ **Makoto Yabe** ▣

Vase
 Stoneware
 Mishima pattern, Green wood ash glaze
 19.5 x 12 x 12"
 MY90



■ Shoji Hamada ■

Bottle

Stoneware

Underglaze iron, nuka (rice husk ash) glaze

9.5 x 7.5 x 6"

H106

16



■ Mark Davis ■

Understanding Eternity

Wall mounted mobile in aluminum and acrylic board with steel wires and nylon cord, oil and acrylic colors

28 x 42 x 15"

MD925



■ Southern African ■

Imbisa, Zulu brewing vessel

Clay and leather
20.25 x 20.5 x 20.25"
SA211



■ ■ Marco Abarca ■ ■

A Couple of Cheerful Acorns
Mixed media construction
12 x 8 x 20.5"
MA33



■ ■ Alexandra de Steiguer ■ ■

Denizens 14
Silver gelatin print on archival paper
6.75 x 9.25"
AS80



▣ Marguerite Robichaux ▣

Darkening Day
Oil on canvas
18 x 24"
MR347



▣ Ipek Kotan ▣

Sculptural vessel form #50
Limoges porcelain
Light amber crackle
1.5 x 8.5 x 8.5"
IK9



■ Fran Forman ■

Wellfleet Spectral

Archival pigment print, edition of 10

16.25 x 25"

FF124



■ Jim Schantz ■

Hemlock Full Moon

Oil on panel

18 x 18"

JMS790

21



■ Fance Franck ■

Large triangular vase, "flying trapeze"

Porcelain

Grey, green, and celadon glaze

9 x 6 x 5.5"

PG195



■ Paul Cary Goldberg ■

Blue Grapes
Inkjet print, edition of 15
18 x 22"
PCG6

22



■ Tatsuzo Shimaoka ■

Faceted jar
Stoneware
Rope and slip inlay with ash glaze
8.5 x 7.75 x 7.75"
73



▣ Judith Stoddard King ▣

Meadow
Collage
3 x 3.75"
JK225



▣ David Sharir ▣

Acrobats
Oil on canvas
24 x 15"



▣ Pat Keck ▣

The Tiger Lillies Musical Gallows

Mixed media construction

23 x 13 x 13"

Separate figures: 4" tall

PK37



▣ Bill Aron ▣

Wildflowers in the Galil

Archival inkjet print on Epson Ultra Smooth Fine Art paper, edition of 18

12 x 36"

AB25



■ Hongwei Li ■

Mei-ping vase

Porcelain

16 x 8.75 x 8.75"

HL142



■ Geoffrey Dunn ■

Vines, Late October

Oil on canvas

30 x 24"

GD37



■ Maria Muller ■

Cabin Window, Mackinac Island

Hand painted photograph, edition of 25

13 x 19"

MM110



■ Ken Matsuzaki ■

Toukaiseki vase
 Stoneware with wooden base
 Yohen natural ash glaze
 15.25 x 15.25 x 6"
 MK1359

27



■ Paul Caponigro ■

Ayabe, Moto-Ise, Bamboo, Japan
 Silver gelatin print
 9.5 x 13"
 PC87



■ Randy Johnston ■

Squared lobed vase

Stoneware

Crackle shino glaze with natural ash, iron slip and brushwork

14 x 6.75 x 6.75"

RJ693

28



■ Roz Karol Ablow ■

City Abstraction

Mixed media

28 x 23.25"

RA19



■ ■ Gerald Garston ■ ■

Profusion
Oil on canvas
40 x 50"
GP464 (DJ)



■ Joseph Ablow ■

The White Box
Pastel
46 x 56"
JA73



■ Miraku Kamei XV ■

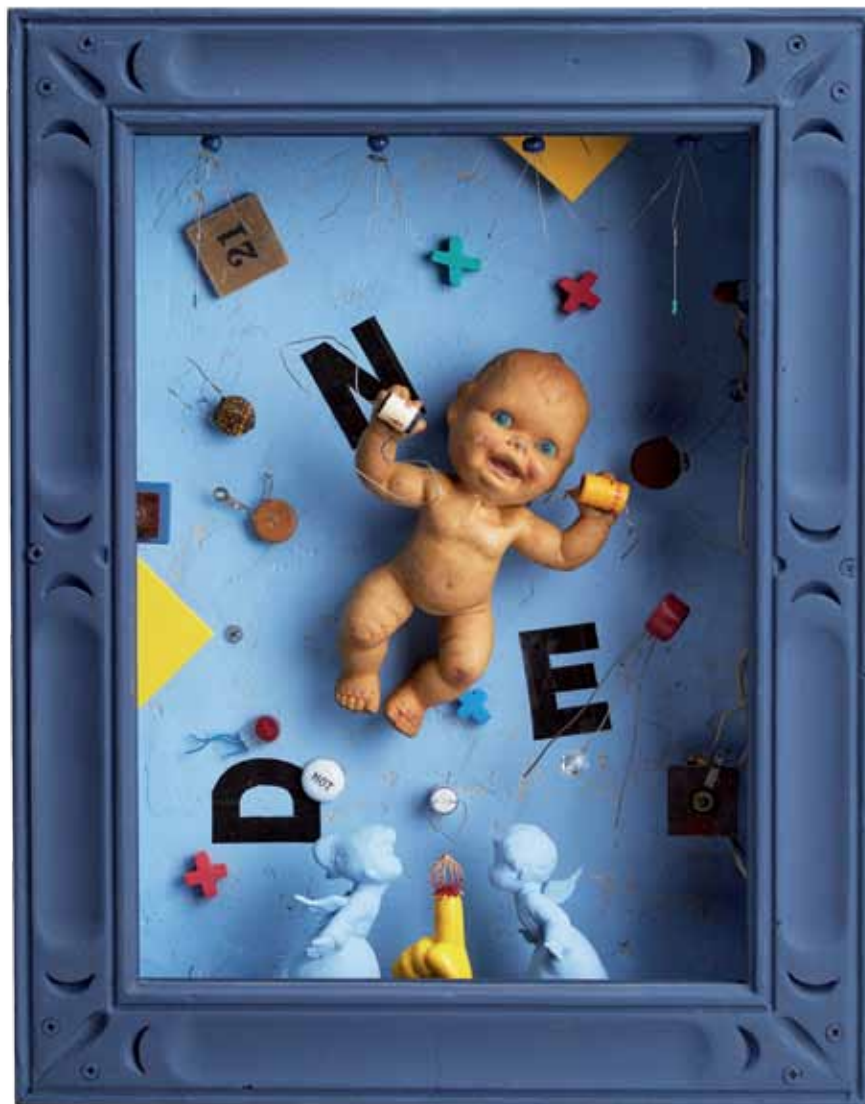
Tea bowl (chawan)
Stoneware
Pentagon design, Takatori style
3 x 5.5 x 5.5"
XV201

Tea bowl (chawan)
Stoneware
Openwork foot, Ame glaze
Shichi Hoh, Takatori style
3.5 x 5.5 x 5.5"
XV200

Tea bowl (chawan)
Stoneware
Yellow glaze, Fuji decoration, Takatori style
3 x 4.75 x 4.75"
XV199



■ Gunnar Norrman ■
Stilla Afton (Still Evening)
 Pencil
 8.25 x 11.75"



■ Barbara Wolinsky ■
N.E.D. Not Enough Data
 Mixed media construction
 17.75 x 14 x 4.5"
 BW18

■ **Pucker Gallery** ■

240 Newbury Street, 3rd Floor
Boston, MA 02116
617.267.9473
contactus@puckergallery.com

■ **Gallery Hours** ■

Monday through Saturday
10:00 AM to 5:30 PM
Sunday 1:00 to 5:00 PM

Pucker Gallery is a member of the
Boston Art Dealers Association
and the New England Appraisers
Association.

■ **Credits** ■

Design:

Leslie Anne Feagley

Editors:

Jeanne Koles, Jocelyn Furniss
& Beth Plakidas

Photography:

John Davenport, and others

© 2023, Pucker Gallery

Printed in the United States by
Modern Postcard

Please visit
www.puckergallery.com
to view current and past
exhibition catalogues,
read artist biographies,
and subscribe to the
Artwork of the Week
or *Pot of the Week*
email lists.

COVER:

■ **Brother Thomas Bezanson** ■

Globular vase with cover
Porcelain
Honon tenmoku glaze
16.25 x 17.75 x 17.75"
TH895B

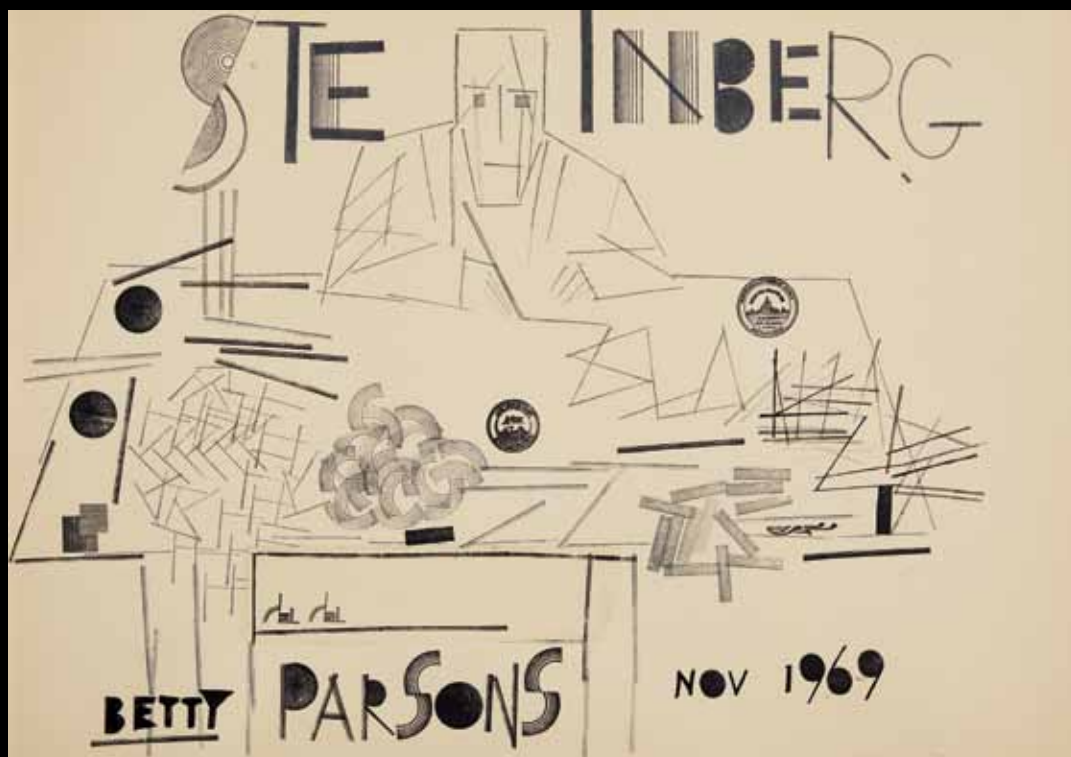
Fine Choices ■ 2023

DATES ■ 15 July through 3 September 2023

PUBLIC OPENING RECEPTION ■ 15 July 2023 ■ 3 to 6 PM

Many of the artists will be present.

ONLINE EVENTS ■ Please visit www.puckergallery.com for a list of
virtual gatherings and events accompanying *Fine Choices*.



■ **Saul Steinberg** ■

Untitled, Unused poster design for Steinberg's 1969 exhibition at the Betty Parsons Gallery
Felt-tip pen, wax crayon, and collage on paper
20 x 26.5"
SS41