

THE BEAUTY OF USE

Three Generations of the Hamada Family



Pucker Gallery | BOSTON



Bottle, n.d.
Tenmoku, kaki, and nuka glaze with finger swipe decoration
8.5 x 4.75 x 4.75"
H73



Covered Box, n.d.
Tenmoku and nuka glaze
3.25 x 3.75 x 3.75"
H76

SHOJI HAMADA

Shoji Hamada was born in 1894 in Tokyo, Japan. He graduated from Tokyo Technical College in 1916 and enrolled at Kyoto Ceramics Research. From 1920 to 1923, Hamada travelled extensively to learn about diverse ceramic and folk craft traditions and built a climbing kiln in England at St. Ives with Bernard Leach (1887–1979). In 1952, Hamada travelled with Soetsu Yanagi (1889–1961) and Bernard Leach throughout the United States to give ceramic demonstrations and workshops. After receiving the Tochigi Prefecture Culture Award and Minister of Education Award for Art, Hamada was designated a Living National Treasure in 1955. Thereafter, he was appointed Director of the Japan Folk Crafts Museum and awarded the Okinawa Times Award and Order of Culture from the Emperor. In 1961, *Shoji Hamada: Collected Works* was published by Asahi Shimbun. In 1973, Hamada received an honorary Doctor of Art degree from the Royal College of Art in London, England. Shoji Hamada died in 1978, a year after the completion of the Mashiko Sankokan Museum, which was built in his home.



COVER LEFT:
Shoji Hamada
Jar, n.d.
Iron brown glaze with angled sides and mouth rim and decorated with sgraffito and abstract brushwork
5.25 x 5.75 x 5.75"
H89

COVER CENTER:
Tomoo Hamada
Faceted Vase
Black glaze with akae decoration
8.25 x 6 x 6"
HT381

COVER RIGHT:
Shinsaku Hamada
Vase
Kaki glaze with akae decoration
7.5 x 8 x 8"
HS97

ALL WORKS ARE STONEWARE.

CREDITS:
Design:
Leslie Anne Feagley

Editors:
Jeanne Koles
Jacqueline Gertner

Photography:
John Davenport

© 2019, Pucker Gallery
Printed in the USA by
Modern Postcard



Covered Jar, 1945
Tetsue brushwork
7.5 x 8 x 8"
LB1



Plate, n.d.
Tenmoku and nuka glaze with ladle poured decoration
1.5 x 9.5 x 9.5"
H84



Squared Bottle, 1965
Tetsue brushwork
9 x 6.25 x 3"
H31 (with wooden box)



Rectangular Bottle, late 1960s
Black and nuka glaze
9.25 x 4 x 4"
H39 (with wooden box)



Lidded Bowl, c. 1930s
 Trilled decoration
 6 x 7.75 x 7.75"
 H11 (with wooden box)



Hexagonal Vase, 1970
 Black and kaki glaze
 8 x 3.75 x 3.75"
 H26



Squared Bottle, c. 1965
 Kaki glaze with wax resist brushwork
 8.25 x 5.75 x 3"
 H41



Bottle, c. 1950
 Natural ash glaze
 9.25 x 7 x 5.75"
 H44



Vase, c. 1950
Tetsue brushwork
6.75 x 4.75 x 4.75"
H56 (with wooden box)



Mizuzashi, c. 1970
Kaki glaze with wax resist brushwork
5.75 x 7 x 6"
H45



Obachi, c. 1960
Green glaze with trailed decoration
4.5 x 18 x 18"
H42



Bowl, c. 1957-1960
 Ash glaze with trailed decoration
 2.75 x 9.5 x 9.25"
 H2



Square Dish, n.d.
 Tenmoku, kaki, and nuka glaze with finger swipe decoration
 1.5 x 8 x 8"
 H88 (with wooden box)



Square Dish, 1960
 Kaki glaze with trailed decoration
 3.25 x 12.5 x 12.5"
 H33 (with wooden box)



Textured Bottle, c. 1930
Black glaze
10.5 x 5.5 x 5.5"
H36 (with wooden box)



Faceted Vase, c. 1960
Salt glaze with wax resist brushwork
10.25 x 5.25 x 5.25"
H43



Oval Dish, c. 1945
Kaki glaze with wax resist brushwork
3 x 11 x 9.75"
H49



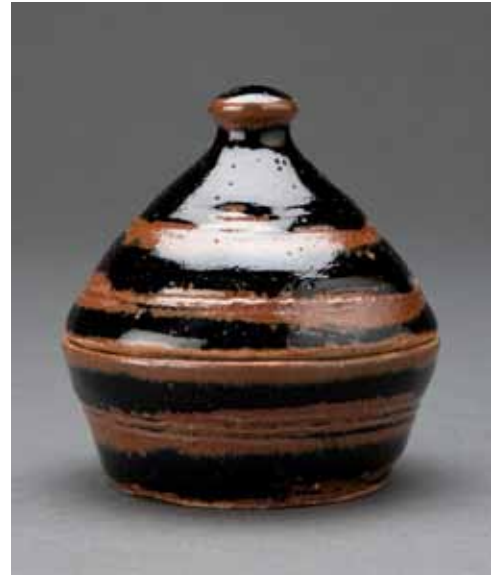
Mizusashi, 1940
Ash glaze
6.5 x 6.25 x 5"
LB2 (with wooden box)



Obachi, c. 1950
Black glaze with trailed decoration
5.5 x 22.5 x 22.5"
H40



Rectangular Dish, c. 1950
Kaki glaze with wax resist brushwork
2.5 x 9 x 7"
H50



Incense Burner, n.d.
Tenmoku and kaki glaze
3.5 x 3.25 x 3.25"
H80



Vase, c. 1970
Hakeme and tetsue brushwork
8.25 x 3.75 x 3.75"
H53 (with wooden box)



Bowl, 1945
Kaki glaze with brushwork decoration
2.75 x 9.5 x 9.5"
H62 (with wooden box)



Plate, c. 1970
Black and kaki glaze with trailed decoration
2.25 x 11 x 11"
H46



Plate, 1970
 Tenmoku and nuka trailed decoration
 2.25 x 11.75 x 11.75"
 H16 (with wooden box)



Pourer, c. 1960s
 Tetsue brushwork
 4.25 x 7.25 x 8.75"
 H5



Bowl, c. 1970
 Tetsue brushwork
 4.25 x 8.25 x 8.25"
 H48



Pourer, 1935
Amber glaze
4.25 x 7.25 x 8.25"
LB4



Pourer, 1965
Hakeme brushwork
5 x 9.5 x 7.5"
H59 (with wooden box)



Set of Five Plates, 1972
Tetsue brushwork
1.75 x 7.5 x 7.5"
NU1303-3



Plate, n.d.
 Tenmoku and nuka glaze with ladle poured decoration
 1.5 x 9.5 x 9.75"
 H82



Plate, 1950
 Kaki glaze with wax resist brushwork
 2 x 9.75 x 9.75"
 H27



Plate, n.d.
 Tenmoku and nuka glaze with ladle poured decoration
 1.5 x 9.5 x 9.75"
 H83



Square Vase, 1960
Kaki glaze
9 x 7 x 6.25"
H64



Square Dish, 1965
Kaki glaze with wax resist brushwork
2.5 x 10.5 x 10.5"
H65



Plate, 1970
Tenmoku and kaki glaze with trailed decoration
2 x 10.75 x 10.75"
H17 (with wooden box)



Fluted Incense Container
Kaki glaze
3 x 3 x 3"
HS102

Lidded Box
Salt glaze with hakeme and akae decoration
3.75 x 4.5 x 4.25"
HS101

SHINSAKU HAMADA

Shinsaku Hamada was born in 1929 in Tokyo, Japan, as the second son of Shoji Hamada. A year later, the Hamada family moved to Mashiko in Tochigi Prefecture. He studied industrial art at Waseda University in Tokyo and thereafter traveled with his father to assist him during demonstrations and lectures. Hamada held his first solo exhibition at the Mitsukoshi Department Store in 1970, and has since had numerous landmark exhibitions there, including a 2009 show to celebrate his 80th birthday. In 1978, Hamada became a Kokugakai National Art Association member and was named Director of the Mashiko Sankokan Museum. In 1999, he received the 27th Shimotsuke Citizens Award. Hamada's work is included in the collections of the Prefectural Governor's residence and the Brooklyn Museum of Art. Hamada continues to exhibit internationally and work alongside his son in the original compound built by his father.



Chawan
White glaze with akae decoration
3.25 x 3.5 x 3.5"
HS104

Chawan
Ji glaze with tensue decoration
3.75 x 3.5 x 3.5"
HS103



Faceted Sake Cup
Salt glaze
3 x 2.75 x 2.75"
HS106

Sake Cup
Salt glaze with hakeme decoration
3 x 3 x 3"
HS105



Vase
Kaki glaze
14 x 7.5 x 7.5"
HS26



Plate
Ji glaze with akae decoration
2.25 x 13 x 13"
HS100



Faceted Vase
Salt glaze with hakeme decoration
11.75 x 8.5 x 8.5"
HS87



Vase
Kaki glaze with akae decoration
6.25 x 6 x 5.75"
HS99



Sake Cup
Salt glaze
2 x 2.75 x 2.75"
HT412

Yunomi
Salt glaze
3.25 x 3 x 2.75"
HT404

Yunomi
Salt glaze
3.5 x 3 x 3"
HT402

Yunomi
Salt glaze
3.5 x 3 x 3"
HT403

Sake Cup
Salt glaze
2.25 x 2.25 x 2.25"
HT413

Tomoo Hamada was born in 1967 in Mashiko, Japan, as the second son of Shinsaku Hamada and a grandson of Shoji Hamada. In 1989 and 1991, Hamada received undergraduate and graduate degrees in sculpture from Tama Art University in Tokyo. Tomoo Hamada has exhibited, lectured, and given workshops internationally and was integral in helping the pottery community of Mashiko rebuild from the devastating Tohoku earthquake of 2011. His ceramic works are included in the permanent collections of numerous museums including the Tochigi Prefectural Museum of Fine Arts; the Museum of Fine Arts, Boston; the Victoria & Albert Museum, London; the Asian Art Museum, San Francisco; and the Embassy of Japan in the UK. He currently lives in Mashiko on the original compound his grandfather built, and works alongside his father. In 2012, he became Director of the Shoji Hamada Memorial Mashiko Sankokan Museum.



TOMOO HAMADA



Chawan
Kaki glaze with akae decoration
3.5 x 4.5 x 4.5"
HT394

Chawan
Black glaze with akae decoration
3.75 x 4.5 x 4.25"
HT395



Tie Vase
Salt glaze with hakeme decoration
12 x 9 x 6.75"
HT374



Tie Vase
Blue and white glazes with akae decoration
12.75 x 8.75 x 10.75"
HT338



Vase
Kaki glaze with akae decoration
8.25 x 6.75 x 3.75"
HT379



Vase
Ji glaze with akae decoration
8.75 x 7.5 x 6"
HT378



Plate
Salt glaze
4 x 21 x 21"
HT184



Bowl
Black and white glazes with akae decoration
8.5 x 16.5 x 16.5"
HT339



Large Plate
Kaki glaze with akae decoration
3.75 x 21.75 x 21.75"
HT124



Large Plate
Akae decoration
4 x 20.25 x 20.25"
HT125 (with wooden box)



Hexagonal Dish
Ji glaze with akae and hakeme decoration
3.25 x 12.25 x 10.75"
HT392

Square Dish
Ji glaze with akae decoration
1.25 x 10.75 x 10.75"
HT393



Plate
Salt glaze with combed decoration
1.5 x 10.75 x 10.75"
HT390

Plate
Black and white glazes with akae decoration
1.5 x 9.75 x 9.75"
HT391



Vase
Kaki glaze with akae decoration
6.75 x 5 x 5"
HT387

Vase
Blue glaze with akae decoration
7 x 5.25 x 5.25"
HT384

Vase
Blue glaze
6.25 x 5 x 5"
HT388



Small Stacking Vase
Black glaze with akae decoration
6.5 x 5.75 x 5.75"
HT382



Small Stacking Vase
Kaki glaze with akae decoration
7 x 6 x 6"
HT383



Fluted Vase
Porcelain; Salt glaze with tensue decoration
7.5 x 4.25 x 4.25"
HT386

Bottle
Salt glaze with fluted decoration
7.25 x 6.25 x 6.25"
HT385



Chawan
Salt glaze with combed decoration
3.5 x 4.25 x 4"
HT396



Yunomi
Kaki glaze with akae decoration
3.5 x 3 x 3"
HT405



Yunomi
Ji glaze with akae decoration
3.5 x 3 x 3"
HT406



Sake Bottle
Black glaze with akae decoration
5 x 3.75 x 3.75
HT407



Sake Bottle
White glaze with akae decoration
4.5 x 3.5 x 3.5"
HT408



Sake Cup
Black and white glazes with akae decoration
2.25 x 2.5 x 2.5"
HT409

Sake Cup
Ji glaze with akae decoration
2.5 x 2.25 x 2.25"
HT411

Sake Cup
Kaki glaze with akae decoration
2 x 3.25 x 3.25"
HT410



Plate
Kaki glaze with akae decoration
2 x 12.75 x 13"
HT389



Lidded Vase
Salt glaze with hakeme decoration
10.25 x 11 x 11"
HT266

Lidded Vase
Green glaze with hakeme decoration
8.75 x 9 x 9"
HT267



Yunomi
Black glaze with akae and fluted decoration
4.75 x 3.25 x 3.25"
HT400

Yunomi
Kaki glaze with akae and fluted decoration
4.5 x 3.25 x 3.25"
HT399



Tawara Vase
Black glaze with akae and combed decoration
7 x 6.5 x 4.75"
HT380



Cross Vase
Kaki glaze with akae decoration
9.75 x 10 x 6.25"
HT377



Vase
Salt glaze
10.5 x 9.5 x 5.5"
HT375



Yunomi
Salt glaze with fluted decoration
4.5 x 3.25 x 3.25"
HT401

Yunomi
Salt glaze with fluted decoration
4.75 x 3.25 x 3.25"
HT397

Yunomi
Salt glaze with fluted decoration
4.5 x 3.25 x 3.25"
HT398

PUCKER

ESTABLISHED 1967 BOSTON

GALLERY

PUCKER GALLERY

240 Newbury Street, 3rd floor

Boston, MA 02116

Phone: 617.267.9473

E-mail: contactus@puckergallery.com

GALLERY HOURS:

Monday through Saturday

10:00 AM to 5:30 PM

Sunday 10:30 AM to 5:00 PM

Pucker Gallery is a member of the
Boston Art Dealers Association
and the New England Appraisers
Association.

THE BEAUTY OF USE

Three Generations of the Hamada Family

DATES: 8 June through 21 July 2019

OPENING RECEPTION: 8 June 2019, 3:00 PM to 6:00 PM

The public is invited to attend. Tomoo Hamada will be present.



Shoji Hamada
Waisted Vase, n.d.
Hakeme and tetsue brushwork
11.5 x 3.5 x 3.5"
H90



Tomoo Hamada
Stacking Vase
Black glaze with akae decoration
12.5 x 6.5 x 7"
HT376



Shinsaku Hamada
Vase
Kaki glaze with akae decoration
8.25 x 5.75 x 5.5"
HS98

Please visit www.puckergallery.com to view current and past exhibition catalogues
and subscribe to the *Pot of the Week* e-mail list.