

# THE BEAUTY OF USE

*Three Generations of the Hamada Family*





*Bottle, n.d.*  
Tenmoku, kaki, and nuka glaze with finger swipe decoration  
8.5 x 4.75 x 4.75"  
H73



*Covered Box, n.d.*  
Tenmoku and nuka glaze  
3.25 x 3.75 x 3.75"  
H76

Shoji Hamada was born in 1894 in Tokyo, Japan. He graduated from Tokyo Technical College in 1916 and enrolled at Kyoto Ceramics Research. From 1920 to 1923, Hamada travelled extensively to learn about diverse ceramic and folk craft traditions and built a climbing kiln in England at St. Ives with Bernard Leach (1887–1979). In 1952, Hamada travelled with Soetsu Yanagi (1889–1961) and Bernard Leach throughout the United States to give ceramic demonstrations and workshops. After receiving the Tochigi Prefecture Culture Award and Minister of Education Award for Art, Hamada was designated a Living National Treasure in 1955. Thereafter, he was appointed Director of the Japan Folk Crafts Museum and awarded the Okinawa Times Award and Order of Culture from the Emperor. In 1961, *Shoji Hamada: Collected Works* was published by Asahi Shimbun. In 1973, Hamada received an honorary Doctor of Art degree from the Royal College of Art in London, England. Shoji Hamada died in 1978, a year after the completion of the Mashiko Sankokan Museum, which was built in his home.



**COVER LEFT:**  
Shoji Hamada  
*Jar, n.d.*  
Iron brown glaze with angled sides and mouth rim and decorated with sgraffito and abstract brushwork  
5.25 x 5.75 x 5.75"  
H89

**COVER CENTER:**  
Tomoo Hamada  
*Faceted Vase*  
Black glaze with akae decoration  
8.25 x 6 x 6"  
HT381

**COVER RIGHT:**  
Shinsaku Hamada  
*Vase*  
Kaki glaze with akae decoration  
7.5 x 8 x 8"  
HS97

ALL WORKS ARE STONEWARE.

**CREDITS:**  
*Design:*  
Leslie Anne Feagley

*Editors:*  
Jeanne Koles  
Jacqueline Gertner

*Photography:*  
John Davenport

© 2019, Pucker Gallery  
Printed in the USA by  
Modern Postcard



*Covered Jar, 1945*  
Tetsue brushwork  
7.5 x 8 x 8"  
LB1



*Plate, n.d.*  
 Tenmoku and nuka glaze with ladle poured decoration  
 1.5 x 9.5 x 9.5"  
 H84



*Squared Bottle, 1965*  
 Tetsue brushwork  
 9 x 6.25 x 3"  
 H31 (with wooden box)



*Rectangular bottle, late 1960s*  
 Black and nuka glaze  
 9.25 x 4 x 4"  
 H39 (with wooden box)



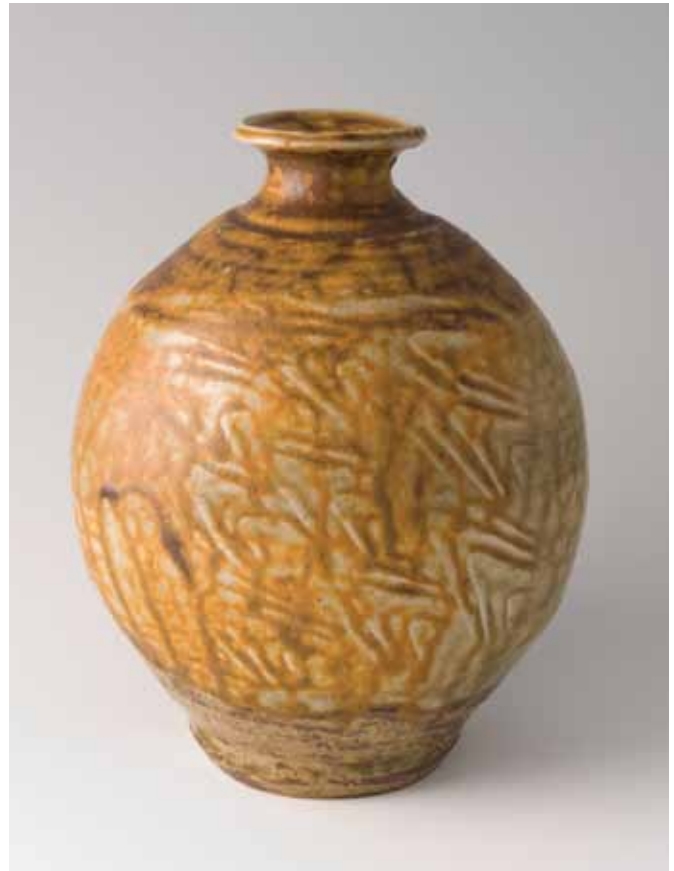
*Lidded Bowl*, c. 1930s  
 Trilled decoration  
 6 x 7.75 x 7.75"  
 H11 (with wooden box)



*Hexagonal Vase*, 1970  
 Black and kaki glaze  
 8 x 3.75 x 3.75"  
 H26



*Squared Bottle*, c. 1965  
 Kaki glaze with wax resist brushwork  
 8.25 x 5.75 x 3"  
 H41



*Bottle*, c. 1950  
 Natural ash glaze  
 9.25 x 7 x 5.75"  
 H44



Vase, c. 1960  
Tetsue brushwork  
6.75 x 4.75 x 4.75"  
H56 (with wooden box)



Mizuzashi, c. 1970  
Kaki glaze with wax resist brushwork  
5.75 x 7 x 6"  
H45



Obachi, c. 1960  
Green glaze with trailed decoration  
4.5 x 18 x 18"  
H42



*Bowl, c. 1957-1960*  
Ash glaze with trailed decoration  
2.75 x 9.5 x 9.25"  
H2

SHOJI HAMADA



*Square Dish, n.d.*  
Tenmoku, kaki, and nuka glaze with finger swipe decoration  
1.5 x 8 x 8"  
H88 (with wooden box)



*Square Dish, 1960*  
Kaki glaze with trailed decoration  
3.25 x 12.5 x 12.5"  
H33 (with wooden box)



*Textured Bottle*, c. 1930  
Black glaze  
10.5 x 5.5 x 5.5"  
H36 (with wooden box)



*Faceted Vase*, c. 1960  
Salt glaze with wax resist brushwork  
10.25 x 5.25 x 5.25"  
H43



*Oval Dish*, c. 1945  
Kaki glaze with wax resist brushwork  
3 x 11 x 9.75"  
H49



*Fluted Incense Container*  
Kaki glaze  
3 x 3 x 3"  
HS102

*Lidded Box*  
Salt glaze with hakeme and akae decoration  
3.75 x 4.5 x 4.25"  
HS101

SHINSAKU HAMADA

**S**hinsaku Hamada was born in 1929 in Tokyo, Japan, as the second son of Shoji Hamada. A year later, the Hamada family moved to Mashiko in Tochigi Prefecture. He studied industrial art at Waseda University in Tokyo and thereafter traveled with his father to assist him during demonstrations and lectures. Hamada held his first solo exhibition at the Mitsukoshi Department Store in 1970, and has since had numerous landmark exhibitions there, including a 2009 show to celebrate his 80th birthday. In 1978, Hamada became a Kokugakai National Art Association member and was named Director of the Mashiko Sankokan Museum. In 1999, he received the 27th Shimotsuke Citizens Award. Hamada's work is included in the collections of the Prefectural Governor's residence and the Brooklyn Museum of Art. Hamada continues to exhibit internationally and work alongside his son in the original compound built by his father.



*Chawan*  
White glaze with akae decoration  
3.25 x 3.5 x 3.5"  
HS104

*Chawan*  
Ji glaze with tensue decoration  
3.75 x 3.5 x 3.5"  
HS103



*Faceted Sake Cup*  
Salt glaze  
3 x 2.75 x 2.75"  
HS106

*Sake Cup*  
Salt glaze with hakeme decoration  
3 x 3 x 3"  
HS105





Vase  
Kaki Glaze  
14 x 7.5 x 7.5"  
HS26



Plate  
Ji glaze with akae decoration  
2.25 x 13 x 13"  
HS100



Faceted Vase  
Salt glaze with hakeme decoration  
11.75 x 8.5 x 8.5"  
HS87



Vase  
Kaki glaze with akae decoration  
6.25 x 6 x 5.75"  
HS99



*Sake Cup*  
Salt glaze  
2 x 2.75 x 2.75"  
HT412

*Yunomi*  
Salt glaze  
3.25 x 3 x 2.75"  
HT404

*Yunomi*  
Salt glaze  
3.5 x 3 x 3"  
HT402

*Yunomi*  
Salt glaze  
3.5 x 3 x 3"  
HT403

*Sake Cup*  
Salt glaze  
2.25 x 2.25 x 2.25"  
HT413

**T**omoo Hamada was born in 1967 in Mashiko, Japan, as the second son of Shinsaku Hamada and a grandson of Shoji Hamada. In 1989 and 1991, Hamada received undergraduate and graduate degrees in sculpture from Tama Art University in Tokyo. Tomoo Hamada has exhibited, lectured, and given workshops internationally and was integral in helping the pottery community of Mashiko rebuild from the devastating Tohoku earthquake of 2011. His ceramic works are included in the permanent collections of numerous museums including the Tochigi Prefectural Museum of Fine Arts, the Museum of Fine Arts, Boston, the Victoria & Albert Museum, London, the Asian Art Museum, San Francisco, and the Embassy of Japan in the UK. He currently lives in Mashiko on the original compound his grandfather built, and works alongside his father. In 2012, he became Director of the Shoji Hamada Memorial Mashiko Sankokan Museum.



TOMOO HAMADA



*Chawan*  
Kaki glaze with akae decoration  
3.5 x 4.5 x 4.5"  
HT394

*Chawan*  
Black glaze with akae decoration  
3.75 x 4.5 x 4.25"  
HT395



*Tie Vase*  
Salt glaze with hakeme decoration  
12 x 9 x 6.75"  
HT374



*Tie Vase*  
Blue and white glazes with akae decoration  
12.75 x 8.75 x 10.75"  
HT338



*Vase*  
Kaki glaze with akae decoration  
8.25 x 6.75 x 3.75"  
HT379



*Vase*  
Ji glaze with akae decoration  
8.75 x 7.5 x 6"  
HT378



*Plate*  
Salt glaze  
4 x 21 x 21"  
HT184



*Bowl*  
Black and white glazes with akae decoration  
8.5 x 16.5 x 16.5"  
HT339



*Large Plate*  
Kaki glaze with akae decoration  
3.75 x 21.75 x 21.75"  
HT124



*Large Plate*  
Akae decoration  
4 x 20.25 x 20.25"  
HT125 (with wooden box)



*Hexagonal Dish*  
Ji glaze with akae and hakeme decoration  
3.25 x 12.25 x 10.75"  
HT392

*Square Dish*  
Ji glaze with akae decoration  
1.25 x 10.75 x 10.75"  
HT393



*Plate*  
Salt glaze with combed decoration  
1.5 x 10.75 x 10.75"  
HT390

*Plate*  
Black and white glazes with akae decoration  
1.5 x 9.75 x 9.75"  
HT391



*Vase*  
Kaki glaze with akae decoration  
6.75 x 5 x 5"  
HT387

*Vase*  
Blue glaze with akae decoration  
7 x 5.25 x 5.25"  
HT384

*Vase*  
Blue glaze  
6.25 x 5 x 5"  
HT388



*Small Stacking Vase*  
Black glaze with akae decoration  
6.5 x 5.75 x 5.75"  
HT382



*Small Stacking Vase*  
Kaki glaze with akae decoration  
7 x 6 x 6"  
HT383



*Fluted Vase*  
Salt glaze with tensue decoration  
7.5 x 4.25 x 4.25"  
HT386

*Bottle*  
Salt glaze with fluted decoration  
7.25 x 6.25 x 6.25"  
HT385

PUCKER

ESTABLISHED 1967 BOSTON

GALLERY

PUCKER GALLERY

240 Newbury Street, 3rd floor

Boston, MA 02116

Phone: 617.267.9473

E-mail: [contactus@puckergallery.com](mailto:contactus@puckergallery.com)

GALLERY HOURS:

Monday through Saturday

10:00 AM to 5:30 PM

Sunday 10:30 AM to 5:00 PM

Pucker Gallery is a member of the  
Boston Art Dealers Association  
and the New England Appraisers  
Association.

# THE BEAUTY OF USE

*Three Generations of the Hamada Family*

DATES: 8 June through 21 July 2019

OPENING RECEPTION: 8 June 2019, 3:00 PM to 6:00 PM

*The public is invited to attend. Tomoo Hamada will be present.*



Shoji Hamada  
*Waisted Vase*, n.d.  
Hakeme and tetsue brushwork  
11.5 x 3.5 x 3.5"  
H90



Tomoo Hamada  
*Stacking Vase*  
Black glaze with akae decoration  
12.5 x 6.5 x 7"  
HT376



Shinsaku Hamada  
*Vase*  
Kaki glaze with akae decoration  
8.25 x 5.75 x 5.5"  
HS98

Please visit [www.puckergallery.com](http://www.puckergallery.com) to view the full catalogue for this exhibition,  
which includes additional works and images and to subscribe to the *Pot of the Week* email list.