



MATERNITE COUCHEE, 1923  
Edition 7/8 • 6.75 x 13.75 x 7"  
Ref. #75



NU, 1933  
Edition 2/8 • 15.75 x 10.25 x 9.75"  
Ref. #187



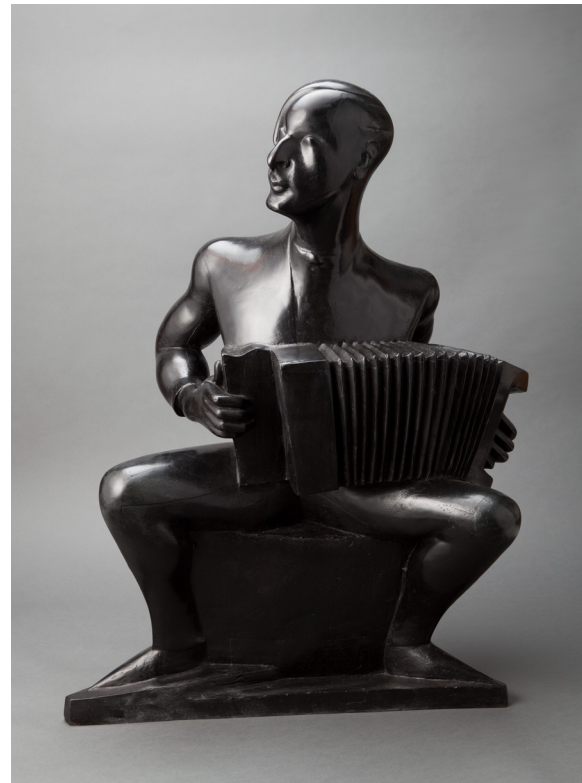
DEBORAH POETESSE, 1940  
Edition 5/8 • 17.25 x 6.75 x 11.5"  
Ref. #237



MADONE, 1946  
13.5 x 15.5 x 5.5" • Ref. #289 (FW)

# CHANA ORLOFF

DATES: 18 July through 6 September 2015  
OPENING RECEPTION: 18 July 2015, 3:00 to 6:00 PM  
*The public is invited to attend.*



ACCORDOENISTE, 1924  
Edition 5/8 • 35.75 x 23.5 x 18"  
Ref. #87

## PUCKER GALLERY

ESTABLISHED 1967 BOSTON

240 Newbury Street, 3rd floor  
Boston, MA 02116  
Phone: 617.267.9473  
www.puckergallery.com

GALLERY HOURS  
Monday through Saturday 10:00 AM to 5:30 PM  
Sunday 10:30 AM to 5:00 PM

Member of the Boston Art Dealers Association.

We offer one free hour of validated parking at the 200 Newbury Street Garage. The garage driving entrance is located on Exeter Street between Newbury and Boylston Streets.

# CHANA ORLOFF

## SCULPTURE

PUCKER GALLERY | BOSTON





# CHANA ORLOFF

Figurative sculptor Chana Orloff was among the many Jewish artists who lived in Paris in the early twentieth century. She was also a member of the pioneer art community in Palestine. Orloff's preferred mediums were wood, stone, marble, bronze, and cement. Her subjects included the painters Pablo Picasso, Henri Matisse, and Amedeo Modigliani. Orloff also sculpted mothers with children and animals. Orloff was born in 1888 in Ukraine and her family immigrated to Palestine in 1905 where she worked as a seamstress in Jaffa. Orloff was offered a job teaching dressmaking and traveled to Paris for certification. Once in Paris in 1910, she discovered a passion for art and studied sculpture at the Russian Academy in Montparnasse and became friendly with other significant modern artists. In 1913, heavily influenced by Cubism, Orloff took part in the Salon d'Automne in Paris. Over the next few years, Orloff matured quickly as a sculptor and her work was displayed at important exhibitions in Paris, Amsterdam, and New York. In 1916, Orloff married Ary Justman, a young Warsaw-born writer and poet. Together they published a book of Justman's poetry accompanied by images of Orloff's first sculptures. Justman died of the post-World War I influenza epidemic shortly after his marriage to Orloff, who then devoted herself entirely to art and to raising their son. By the 1920s, Orloff's reputation was already well established, especially for portraits. In the 1920's and 30's her sculptures were exhibited in the United States, Tel Aviv, and Paris. Orloff fled Paris for Switzerland with her son when the Germans invaded Paris during World War II. In 1945, Orloff returned to her home to find the sculptures in her studio had been destroyed. During the 1950's the artist's works were exhibited numerous times throughout Israel, the United States, and Europe. In 1968, Orloff died while working to organize a retrospective exhibition at the Tel Aviv Museum and is buried in Israel.



Source: "Jewish Expression in Twentieth Century Fine Arts." Excerpted from Jewish Art, by Grace Cohen Grossman, 1998.

LITERATURE: Feliz Marilhac, Chana Orloff, Les Editions de l'Amateur, Paris, 1991.

CREDITS:  
Design: Tess Mattern  
Editor: Destiny M. Barletta  
Photography: John Davenport  
© 2015, Pucker Gallery  
Printed in China by Toppan Leefung Printing Co.

All works are cast bronze.

COVER: OISEAU, 1924  
Edition 5/8 • 39.75 x 14.25 x 17.25"  
Ref. #92

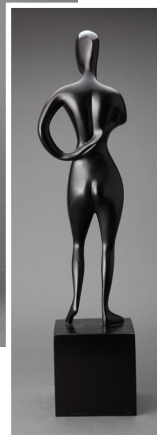
ABOVE: SIRENE, 1959  
Edition 2/8 • 15.25 x 16.25 x 10.25"  
Ref. # 399



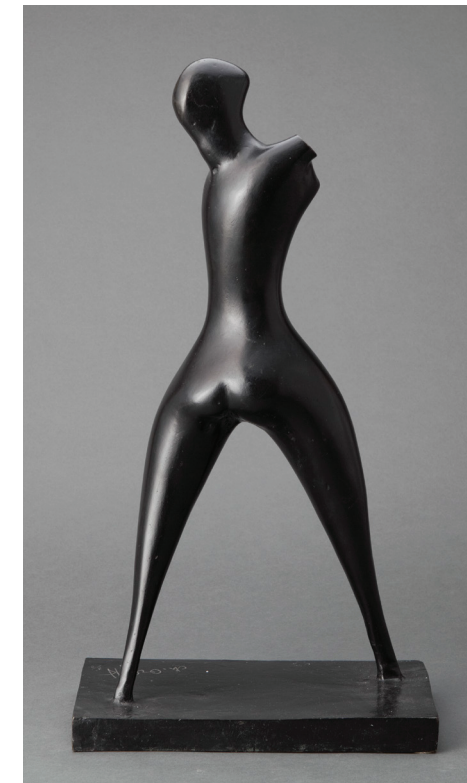
MOI ET MON FILS, 1927  
Edition 1/8 • 25.25 x 13 x 10"  
Ref. #130



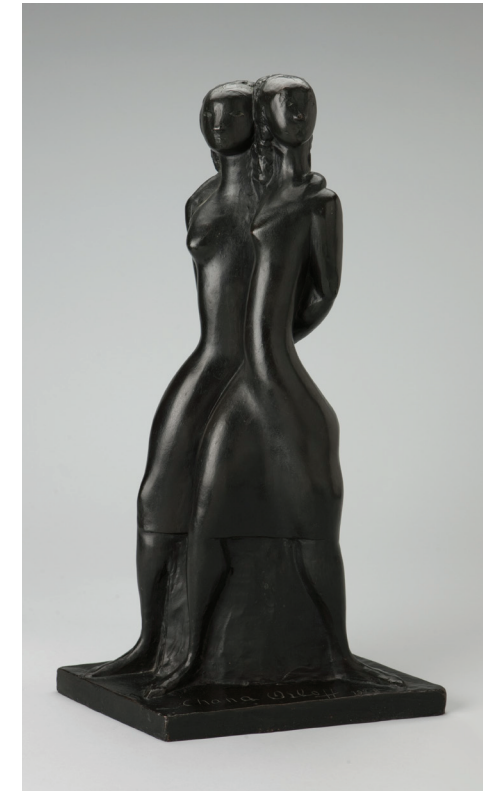
NU DEBOUT, 1960  
Edition 1/8 • 28 x 7 x 4.75"  
Ref. #421



VIERGE, JEANNE HEBUTERNE, 1914  
Edition 6/8 • 21.25 x 4.25 x 3.5"  
Ref. #9



VENUS, 1965  
Edition 2/8 • 18 x 9.75 x 9.75"  
Ref. #454



RUTH ET NOEMI, 1928  
Edition 7/8 • 23.5 x 13.25 x 6.25"  
Ref. #141



SUSY, 1930  
Edition 3/8 • 28.75 x 9 x 9"  
Ref. #161

